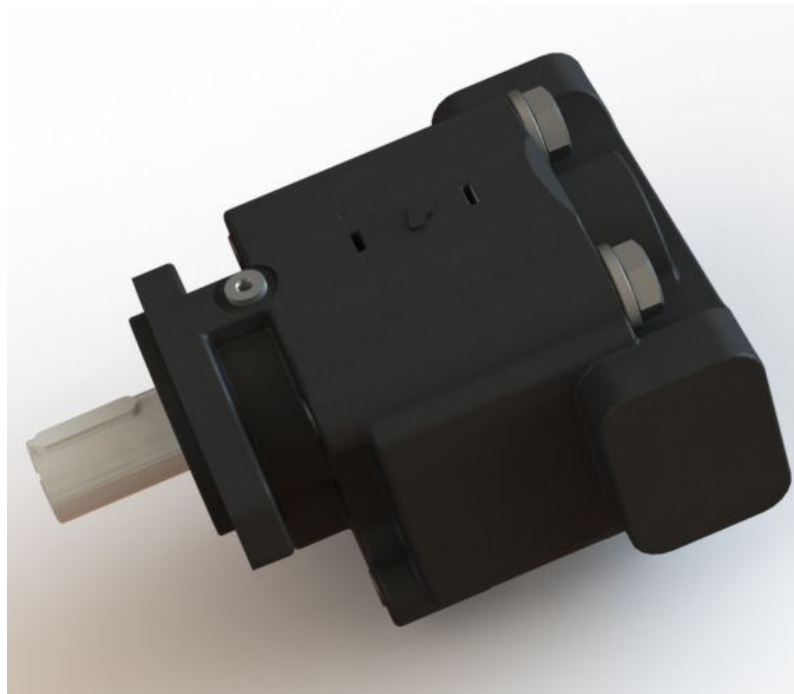


Permco



197 Series Code Book

Disclaimer

THROUGH THE USE OF THIS CATALOG ALL THE COMPONENT PARTS OF ANY PERMCO PUMP OR MOTOR CAN BE DETERMINED EXCLUDING FASTENERS.

THIS CODE BOOK IS FOR THE 197 SERIES PUMPS AND MOTORS.

EACH MODEL SERIES IS DIVIDED IN THE FOLLOWING MANNER:

- I. SHAFT END COVERS FOLLOWED BY SHAFT END COVER SMALL PARTS.
- II. PORT END COVERS FOLLOWED BY PORT END COVER SMALL PARTS.
- III. GEAR HOUSINGS FOLLOWED BY:
 - A. GEAR HOUSING SMALL PARTS.
 - B. GEARS.
- IV. DRIVE SHAFTS OR GEAR/SHAFTS FOLLOWED BY DRIVE SHAFT SMALL PARTS.
- V. BEARING CARRIERS FOLLOWED BY BEARING CARRIER SMALL PARTS.
- VI. CONNECTING SHAFTS.

COPYRIGHT © AUGUST 1999 BY PERMCO, INC. ALL RIGHTS RESERVED. NO PART OF THIS BOOK MAY BE REPRODUCED, STORED IN A RETRIEVAL SYSTEM, OR TRANSMITTED IN ANY FORM OR BY ANY MEANS ELECTRONIC, MECHANICAL, PHOTOCOPYING, RECORDING, OR OTHERWISE WITHOUT PRIOR WRITTEN PERMISSION OF PERMCO, INC.

How To

BELOW IS AN EXAMPLE OF HOW TO USE THIS CATALOG:

SINGLE ASSEMBLY CODE: P197A031CBZA20-14

TANDEM ASSEMBLY CODE: P197B031CBZA20-14GBXZA12-1

P DENOTES PUMP (M DENOTES MOTOR, PB DENOTES PIGGYBACK OR TRANSITION)
197 SERIES

A B OR C MODEL TYPE (A-SINGLE B-TANDEM C-SPECIAL DRIVE SHAFT)

031 SHAFT END COVER

CB PORT END COVER

ZA20 GEAR HOUSING (FIRST)

14 DRIVE SHAFT

GBX BEARING CARRIER

ZA12 GEAR HOUSING (SECOND)

1 CONNECTING SHAFT

THE ROTATION OF ANY UNIT IS IDENTIFIED BY THE FIRST DIGIT OF THE SHAFT END COVER
CODE

(SEE INDIVIDUAL SERIES COVER PAGES). THE GEAR SIZE IS DENOTED BY THE TWO (2) DIGITS IN
THE GEAR HOUSING CODE.

CODE. :	05	07	10	12	15	17	20
SIZE IN INCHES:	1/2	3/4	1	1-1/4	1-1/2	1-3/4	2

ROTATION IS VIEWED LOOKING AT SHAFT END (SHAFT ON TOP.)

AN ASTERISK (*) DENOTES EITHER OBSOLETE OR SPECIAL. PLEASE CONSULT FACTORY AS THEY
MAY BE REPLACED BY OTHER STANDARD ITEMS.

Abbreviations

Shaft End Cover Description

FT MT	FOOT MOUNT
G F TOP	GREASE FITTING ON TOP (OTHERS ON BOTTOM)
PAD MT	PAD MOUNT
PB	PIGGYBACK PUMP
PD	PILOT DIAMETER
PX	PILOT EXTENSION
RD FLG	ROUND FLANGE
W/MTG SLT	WITH MOUNTING SLOT
WD	WITH DRAIN
WD2	WITH DRAIN AT 2 OCLOCK POSITION
WD8	WITH DRAIN AT 8 OCLOCK POSITION
WD12	WITH DRAIN AT 12 OCLOCK POSITION
W2D	WITH 2 DRAINS

Port End Cover Description

OS	PORTS ARE OUT THE SIDE
PB	PIGGYBACK PUMP
XSD	EXTENDED STUDS

Shaft Description

T	TOOTH
PB	PIGGYBACK PUMP
W/THD END	WITH THREADED END

Porting Descriptions

ORB	STRAIGHT THREAD. PORT SIZE REFERS TO O.D. OF TUBE.
SF	SPLIT FLANGE PORTS. PORT SIZE REFERS TO FLANGE HOLE DIAMETER.
T	INTERNAL CONNECTIONS TO FRONT & BACK SECTION.
B	CONNECTION TO BACK SECTION.
F	CONNECTION TO FRONT SECTION.

Identification

STUD HOLES - 4 AT 11/16 DIAMETER
STUD DIA. - 5/8 IN.
ONE-PIECE DRIVE SHAFT AND GEAR (INTEGRAL)
HOUSING HEIGHT - 5-3/8 INCHES
HOUSING WIDTH - GEAR SIZE + 1/2 INCH
BOLT TORQUE - 200 FT-LBS

Gear Widths available

1/2, 3/4, 1, 1-1/4, 1-1/2, 1-3/4, AND 2 INCHES

Shaft End Covers

THE TYPE OF SHAFT END COVER IS DETERMINED BY THE ENTIRE 3 DIGIT DESIGNATION.
THIS SERIES IS AVAILABLE BOTH WITH AND WITHOUT OUTBOARD BEARINGS.
THE FIRST DIGIT OF THE SHAFT END COVER CODE DESIGNATES PUMP/MOTOR ROTATION.

ALL CODES BEGINNING WITH	CW	CCW	DBL	PUMP	MOTOR	BEARING
0	XX			XX		
1		XX		XX		
3	XX			XX		XX
4		XX		XX		XX
7			XX		XX	XX
8			XX		XX	

Drive Shafts

C - DENOTES SPECIAL SEPARATE DRIVE SHAFT. (REFER TO CODING ILLUSTRATION ON INTRODUCTORY PAGES).
THESE CODES MUST BE USED IN CONJUNCTION WITH SHAFT END COVERS WHICH CONTAIN OUTBOARD BEARINGS.

Single In, Dual Out Bearing Carrier Codes Explained

In the belly down position, determine pump rotation from shaft end. Clockwise rotation will put the inlet on the left side and the top outlet port will be for the front gear section. Counter-clockwise rotation will put the inlet on the right side and the top outlet will be for the rear gear section.

Select inlet port size. Find the appropriate letter that meets the port size and the rotation requirements.

Select outlet port requirements. Top outlet refers to the front gear section for clockwise rotation and rear gear section for counter-clockwise rotation. Bottom outlet refers to the rear gear section for clockwise rotation and front gear section for counter-clockwise rotation.

Combine the inlet port designation with the outlet port designation to arrive at the bearing carrier code.

EXAMPLE

Rotation: Clockwise

Inlet Porting: 1-1/4" Split Flange inlet

Designator: C

Outlet Porting: 1" Split Flange Top (front)

3/4" Split Flange Bottom (rear)

Designator: AB

Complete Bearing Carrier Code: CAB

Split Flange Porting Codes			
Inlet Port	Rotation		
	CW	CCW	
1	A	B	
1-1/4	C	D	
1-1/2	E	F	
2	G	H	
Bottom Outlet	Top Outlets		
	3/4	1	1-1/4
3/4	AA	AB	AC
1	BA	BB	BC
1-1/4	CA	CB	CC

BSPP Porting Codes			
Inlet Port	Rotation		
	CW	CCW	
1	I	J	
1-1/4	K	L	
1-1/2	M	N	
Bottom Outlet	Top Outlets		
	3/4	1	1-1/4
3/4	DA	DB	DC
1	EA	EB	EC
1-1/4	FA	FB	FC

Straight Thread ORB Porting Codes				
Inlet Port	Rotation			
	CW	CCW		
1	Q	R		
1-1/4	S	T		
1-1/2	U	V		
Bottom Outlet	Top Outlets			
	1/2	3/4	1	1-1/4
1/2	HA	HB	HC	HD
3/4	JA	JB	JC	JD
1	KA	KB	KC	KD
1-1/4	LA	LB	LC	LD

Single In, Single Out Bearing Carrier Codes Explained

EXAMPLE

Rotation: Clockwise

Inlet Porting: 1-1/4" Split Flange inlet

Designator: C

Outlet Porting: 1" Split Flange - Front

Designator: BX

Complete Bearing Carrier Code: CBX

Split Flange Porting Codes			
Inlet Port	Rotation		
	CW		CCW
1	A	B	
1-1/4	C	D	
1-1/2	E	F	
2	G	H	
Outlet Ports	Port	Port	Com mon Outlet
	To Front	To Rear	
3/4	AX	XA	MA
1	BX	XB	MB
1-1/4	CX	XC	MC
1-1/2	DX	XD	MD
2	EX	XE	ME

BSPP Porting Codes			
Inlet Port	Rotation		
	CW		CCW
1	I	J	
1-1/4	K	L	
1-1/2	M	N	
Outlet Ports	Port	Port	Com mon Outlet
	To Front	To Rear	
3/4	GX	XG	MG
1	HX	XH	MH
1-1/4	IX	XI	MI
1-1/2	JX	XJ	MJ

Straight Thread ORB Porting Codes			
Inlet Port	Rotation		
	CW		CCW
1	Q	R	
1-1/4	S	T	
1-1/2	U	V	
Outlet Ports	Port	Port	Com mon Outlet
	To Front	To Rear	
1/2	LX	XL	ML
3/4	MX	XM	MM
1	NX	XN	MN
1-1/4	QX	XQ	MQ
1-1/2	RX	XR	MR

Accessories

Plastic Plugs	
Port Size	Part No.
NPT & BSPP	
1/8"	#8
1/4"	#11
3/8"	#17
1/2"	#23
3/4"	#30
1"	#42
1-1/4"	#53
1-1/2"	#57
2"	#68
2-1/2"	#78
SAE ORB	
1/2"	#23
3/8"	#17
5/8"	#27
3/4"	#35
7/8"	#42
1"	#44
1-1/4"	#53
1-1/2"	#57
SF & Metric SF	
1/2"	#12
3/4"	B-831-213
1"	B-831-214
1-1/4"	B-831-215
1-1/2"	B-831-216
2"	B-831-217
2-1/2"	B-831-218

Fasteners for Single Units			
Gear Size	Part No.	Bolt Length	Qty.
1/2"	W1-096	3-1/2"	4
3/4"	W1-13	4"	4
1"	W1-13	4"	4
1-1/4"	W1-58	4-1/2"	4
1-1/2"	W1-58	4-1/2"	4
1-3/4"	W1-14	5"	4
2"	W1-14	5"	4
Washer Part No.		W033-2	4

Shaft Protectors	
SP-1000-1	.656"Dia
SP-1000-2	.587"Dia
SP-1000-3	1"Dia
SP-1000-4	1-1/4" Splined & 1-1/8"Dia
SP-1000-5	1-1/4" Dia Keyed
SP-1000-6	1/2"Dia
SP-1000-7	5/8"Dia
SP-1000-8	3/4"Dia
SP-1000-8	7/8"Dia

Fasteners for Multi-Section Units		
Add Total Gear Width to the length provided below to obtain stud length		
	Flush	Extended
Dual Section	8	10
Triple Section	12	14
Quad Section	16	18
Washer Part No.	W033-2	Qty of 4
Nut Part No.	W3-65	Qty of 4

Available Stud Lengths	
Stud Part No.	Description
ZD-0391-08	5/8-11 x 8"
ZD-0391-875	5/8-11 x 8.75"
ZD-0391-09	5/8-11 x 9"
ZD-0391-95	5/8-11 x 9.5"
ZD-0391-10	5/8-11 x 10"
ZD-0391-105	5/8-11 x 10.5"
ZD-0391-112	5/8-11 x 11.25"
ZD-0391-12	5/8-11 x 12"
ZD-0391-125	5/8-11 x 12.5"
ZD-0391-132	5/8-11 x 13.25"
ZD-0391-14	5/8-11 x 14"
ZD-0391-142	5/8-11 x 14.25"
ZD-0391-16	5/8-11 x 16"
ZD-0391-18	5/8-11 x 18"
ZD-0391-20	5/8-11 x 20"
ZD-0391-22	5/8-11 x 22"
ZD-0391-24	5/8-11 x 24"
ZD-0391-26	5/8-11 x 26"
ZD-0391-28	5/8-11 x 28"
ZD-0391-30	5/8-11 x 30"
ZD-0391-36	5/8-11 x 36"
ZD-0391-40	5/8-11 x 40"

Shaft End cover Codes

Code	QTY	Part Number	Description
031	1	574-00368	CW 197 Pump Type I SEC with SAE "B" (4" PILOT) 4 Bolts NO Outboard Bearing
050	1	574-01372	CW 197 Pump Type I SEC with SAE "C" (5" PILOT) 2 & 4 Bolts NO Outboard Bearing
067	1	574-00376	CW 197 Pump Type I SEC with SAE "C" (5" PILOT) 4 Bolts NO Outboard Bearing
076	1	574-01273	CW 197 Pump Type I SEC with DIN 4 Bolts NO Outboard Bearing
083	1	574-00895	CW 197 Pump Type I SEC with SAE "A" (3-1/4" PILOT) 2 Bolts NO Outboard Bearing
085	1	574-01632	CW 197 Pump Type II SEC with SAE "B" (4" PILOT) 2 Bolts NO Outboard Bearing
086	1	574-00377	CW 197 Pump Type I SEC with SAE "B" (4" PILOT) 2 Bolts NO Outboard Bearing
090	1	574-01371	CW 197 Pump Type I SEC with SAE "B" (4" PILOT) 2 & 4 Bolts NO Outboard Bearing
131	1	574-00368	CCW 197 Pump Type I SEC with SAE "B" (4" PILOT) 4 Bolts NO Outboard Bearing
150	1	574-01372	CCW 197 Pump Type I SEC with SAE "C" (5" PILOT) 2 & 4 Bolts NO Outboard Bearing
167	1	574-00376	CCW 197 Pump Type I SEC with SAE "C" (5" PILOT) 4 Bolts NO Outboard Bearing
176	1	574-01273	CCW 197 Pump Type I SEC with DIN 4 Bolts NO Outboard Bearing
183	1	574-00895	CCW 197 Pump Type I SEC with SAE "A" (3-1/4" PILOT) 2 Bolts NO Outboard Bearing
185	1	574-01632	CCW 197 Pump Type II SEC with SAE "B" (4" PILOT) 2 Bolts NO Outboard Bearing
186	1	574-00377	CCW 197 Pump Type I SEC with SAE "B" (4" PILOT) 2 Bolts NO Outboard Bearing
190	1	574-01371	CCW 197 Pump Type I SEC with SAE "B" (4" PILOT) 2 & 4 Bolts NO Outboard Bearing
331	1	574-00368	CW 197 Pump Type I SEC with SAE "B" (4" PILOT) 4 Bolts With Outboard Bearing
350	1	574-01372	CW 197 Pump Type I SEC with SAE "C" (5" PILOT) 2 & 4 Bolts With Outboard Bearing
367	1	574-00376	CW 197 Pump Type I SEC with SAE "C" (5" PILOT) 4 Bolts With Outboard Bearing
383	1	574-00895	CW 197 Pump Type I SEC with SAE "A" (3-1/4" PILOT) 2 Bolts With Outboard Bearing
386	1	574-00377	CW 197 Pump Type I SEC with SAE "B" (4" PILOT) 2 Bolts With Outboard Bearing
390	1	574-01371	CW 197 Pump Type I SEC with SAE "B" (4" PILOT) 2 & 4 Bolts With Outboard Bearing
431	1	574-00368	CCW 197 Pump Type I SEC with SAE "B" (4" PILOT) 4 Bolts With Outboard Bearing
450	1	574-01372	CCW 197 Pump Type I SEC with SAE "C" (5" PILOT) 2 & 4 Bolts With Outboard Bearing
467	1	574-00376	CCW 197 Pump Type I SEC with SAE "C" (5" PILOT) 4 Bolts With Outboard Bearing
483	1	574-00895	CCW 197 Pump Type I SEC with SAE "A" (3-1/4" PILOT) 2 Bolts With Outboard Bearing
486	1	574-00377	CCW 197 Pump Type I SEC with SAE "B" (4" PILOT) 2 Bolts With Outboard Bearing
490	1	574-01371	CCW 197 Pump Type I SEC with SAE "B" (4" PILOT) 2 & 4 Bolts With Outboard Bearing

Shaft End cover Codes

Code	QTY	Part Number	Description
731	1	574-01321	Motor 197 Motor Type I SEC with SAE "B" (4" PILOT) 4 Bolts With Outboard Bearing
750	1	574-01372	Motor 197 Motor Type I SEC with SAE "C" (5" PILOT) 2 & 4 Bolts With Outboard Bearing
767	1	574-01323	Motor 197 Motor Type I SEC with SAE "C" (5" PILOT) 4 Bolts With Outboard Bearing
783	1	574-01324	Motor 197 Motor Type I SEC with SAE "A" (3-1/4" PILOT) 2 Bolts With Outboard Bearing
786	1	574-01353	Motor 197 Motor Type I SEC with SAE "B" (4" PILOT) 2 Bolts With Outboard Bearing
790	1	574-01371	Motor 197 Motor Type I SEC with SAE "B" (4" PILOT) 2 & 4 Bolts With Outboard Bearing
831	1	574-01321	Motor 197 Motor Type I SEC with SAE "B" (4" PILOT) 4 Bolts NO Outboard Bearing
850	1	574-01372	Motor 197 Motor Type I SEC with SAE "C" (5" PILOT) 2 & 4 Bolts NO Outboard Bearing
867	1	574-01323	Motor 197 Motor Type I SEC with SAE "C" (5" PILOT) 4 Bolts NO Outboard Bearing
883	1	574-01324	Motor 197 Motor Type I SEC with SAE "A" (3-1/4" PILOT) 2 Bolts NO Outboard Bearing
885	1	574-01632-4	Motor 197 Motor Type II SEC with SAE "B" (4" PILOT) 2 Bolts NO Outboard Bearing
886	1	574-01353	Motor 197 Motor Type I SEC with SAE "B" (4" PILOT) 2 Bolts NO Outboard Bearing
890	1	574-01371	Motor 197 Motor Type I SEC with SAE "B" (4" PILOT) 2 & 4 Bolts NO Outboard Bearing

Shaft End cover Small Parts Codes

Code	QTY	Part Number	Description
031	2	921-00427-P	197 HIGH PRESSURE BUSHING
031	1	W62-26-18	DOUBLE LIP SEAL
050	1	565-01194	1/4" ORB HOLLOW HEX PLUG
050	2	921-00427-P	197 HIGH PRESSURE BUSHING
050	2	S-0280	PLUG
050	1	W62-26-18	DOUBLE LIP SEAL
067	2	921-00427-P	197 HIGH PRESSURE BUSHING
067	1	W62-26-18	DOUBLE LIP SEAL
076	2	921-00427-P	197 HIGH PRESSURE BUSHING
076	1	W62-26-18	DOUBLE LIP SEAL
083	2	921-00427-P	197 HIGH PRESSURE BUSHING
083	1	W62-26-18	DOUBLE LIP SEAL
085	2	921-00427-P	197 HIGH PRESSURE BUSHING
085	1	W62-26-18	DOUBLE LIP SEAL
086	2	921-00427-P	197 HIGH PRESSURE BUSHING
086	1	W62-26-18	DOUBLE LIP SEAL
090	1	565-01194	1/4" ORB HOLLOW HEX PLUG
090	1	565-01194	1/4" ORB, HOLLOW HEX PLUG
090	2	921-00427-P	197 HIGH PRESSURE BUSHING
090	2	S-0280	PLUG
131	2	921-00427-P	197 HIGH PRESSURE BUSHING
131	1	W62-26-18	DOUBLE LIP SEAL
150	1	565-01194	1/4" ORB HOLLOW HEX PLUG
150	2	921-00427-P	197 HIGH PRESSURE BUSHING
150	2	S-0280	PLUG
150	1	W62-26-18	DOUBLE LIP SEAL
167	2	921-00427-P	197 HIGH PRESSURE BUSHING
167	1	W62-26-18	DOUBLE LIP SEAL
176	2	921-00427-P	197 HIGH PRESSURE BUSHING
176	1	W62-26-18	DOUBLE LIP SEAL
183	2	921-00427-P	197 HIGH PRESSURE BUSHING
183	1	W62-26-18	DOUBLE LIP SEAL
185	2	921-00427-P	197 HIGH PRESSURE BUSHING
185	1	W62-26-18	DOUBLE LIP SEAL
186	2	921-00427-P	197 HIGH PRESSURE BUSHING
186	1	W62-26-18	DOUBLE LIP SEAL
190	1	565-01194	1/4" ORB HOLLOW HEX PLUG

Shaft End cover Small Parts Codes

Code	QTY	Part Number	Description
190	2	921-00427-P	197 HIGH PRESSURE BUSHING
190	2	S-0280	PLUG
190	1	W62-26-18	DOUBLE LIP SEAL
283	3	L-0280-K	CHECK VALVE
331	2	921-00427-P	197 HIGH PRESSURE BUSHING
331	1	W023-206	SPIROLOX SNAP RING
331	1	W58-39	BALL BEARING
331	1	W62-26-18	DOUBLE LIP SEAL
350	1	565-01194	1/4" ORB HOLLOW HEX PLUG
350	2	921-00427-P	197 HIGH PRESSURE BUSHING
350	2	S-0280	PLUG
350	1	W023-206	SPIROLOX SNAP RING
350	1	W58-39	BALL BEARING
350	1	W62-26-18	DOUBLE LIP SEAL
367	2	921-00427-P	197 HIGH PRESSURE BUSHING
367	1	W023-206	SPIROLOX SNAP RING
367	1	W58-39	BALL BEARING
367	1	W62-26-18	DOUBLE LIP SEAL
383	2	921-00427-P	197 HIGH PRESSURE BUSHING
383	1	W023-206	SPIROLOX SNAP RING
383	1	W58-39	BALL BEARING
383	1	W62-26-18	DOUBLE LIP SEAL
386	2	921-00427-P	197 HIGH PRESSURE BUSHING
386	1	W023-206	SPIROLOX SNAP RING
386	1	W58-39	BALL BEARING
386	1	W62-26-18	DOUBLE LIP SEAL
390	1	565-01194	1/4" ORB HOLLOW HEX PLUG
390	2	921-00427-P	197 HIGH PRESSURE BUSHING
390	2	S-0280	PLUG
390	1	W023-206	SPIROLOX SNAP RING
390	1	W58-39	BALL BEARING
390	1	W62-26-18	DOUBLE LIP SEAL
431	2	921-00427-P	197 HIGH PRESSURE BUSHING
431	1	W023-206	SPIROLOX SNAP RING
431	1	W58-39	BALL BEARING
431	1	W62-26-18	DOUBLE LIP SEAL
450	1	565-01194	1/4" ORB HOLLOW HEX PLUG

Shaft End cover Small Parts Codes

Code	QTY	Part Number	Description
450	2	921-00427-P	197 HIGH PRESSURE BUSHING
450	2	S-0280	PLUG
450	1	W023-206	SPIROLOX SNAP RING
450	1	W58-39	BALL BEARING
450	1	W62-26-18	DOUBLE LIP SEAL
467	2	921-00427-P	197 HIGH PRESSURE BUSHING
467	1	W023-206	SPIROLOX SNAP RING
467	1	W58-39	BALL BEARING
467	1	W62-26-18	DOUBLE LIP SEAL
483	2	921-00427-P	197 HIGH PRESSURE BUSHING
483	1	W023-206	SPIROLOX SNAP RING
483	1	W58-39	BALL BEARING
483	1	W62-26-18	DOUBLE LIP SEAL
486	2	921-00427-P	197 HIGH PRESSURE BUSHING
486	1	W023-206	SPIROLOX SNAP RING
486	1	W58-39	BALL BEARING
486	1	W62-26-18	DOUBLE LIP SEAL
490	1	565-01194	1/4" ORB HOLLOW HEX PLUG
490	2	921-00427-P	197 HIGH PRESSURE BUSHING
490	2	S-0280	PLUG
490	1	W023-206	SPIROLOX SNAP RING
490	1	W58-39	BALL BEARING
490	1	W62-26-18	DOUBLE LIP SEAL
731	1	565-01194	1/4" ORB HOLLOW HEX PLUG
731	2	921-00427-P	197 HIGH PRESSURE BUSHING
731	2	L-0280-K	CHECK VALVE
731	1	W023-206	SPIROLOX SNAP RING
731	1	W58-39	BALL BEARING
731	1	W62-49-11	DOUBLE LIP SEAL
731	1	ZD-0558	BEARING SPACER
750	1	565-01194	1/4" ORB HOLLOW HEX PLUG
750	2	921-00427-P	197 HIGH PRESSURE BUSHING
750	2	L-0280-K	CHECK VALVE
750	1	W023-206	SPIROLOX SNAP RING
750	1	W58-39	BALL BEARING
750	1	W62-49-11	DOUBLE LIP SEAL
750	1	ZD-0558	BEARING SPACER

Shaft End cover Small Parts Codes

Code	QTY	Part Number	Description
767	1	565-01194	1/4" ORB HOLLOW HEX PLUG
767	2	921-00427-P	197 HIGH PRESSURE BUSHING
767	2	L-0280-K	CHECK VALVE
767	1	W023-206	SPIROLOX SNAP RING
767	1	W58-39	BALL BEARING
767	1	W62-49-11	DOUBLE LIP SEAL
767	1	ZD-0558	BEARING SPACER
783	1	565-01194	1/4" ORB HOLLOW HEX PLUG
783	2	921-00427-P	197 HIGH PRESSURE BUSHING
783	2	L-0280-K	CHECK VALVE
783	1	W023-206	SPIROLOX SNAP RING
783	1	W58-39	BALL BEARING
783	1	W62-49-11	DOUBLE LIP SEAL
783	1	ZD-0558	BEARING SPACER
786	1	565-01194	1/4" ORB HOLLOW HEX PLUG
786	2	921-00427-P	197 HIGH PRESSURE BUSHING
786	2	L-0280-K	CHECK VALVE
786	1	W023-206	SPIROLOX SNAP RING
786	1	W58-39	BALL BEARING
786	1	W62-49-11	DOUBLE LIP SEAL
786	1	ZD-0558	BEARING SPACER
790	1	565-01194	1/4" ORB HOLLOW HEX PLUG
790	2	921-00427-P	197 HIGH PRESSURE BUSHING
790	2	L-0280-K	CHECK VALVE
790	1	W023-206	SPIROLOX SNAP RING
790	1	W58-39	BALL BEARING
790	1	W62-49-11	DOUBLE LIP SEAL
790	1	ZD-0558	BEARING SPACER
831	1	400-00682	BEARING SPACER
831	1	565-01194	1/4" ORB HOLLOW HEX PLUG
831	2	921-00427-P	197 HIGH PRESSURE BUSHING
831	2	L-0280-K	CHECK VALVE
831	1	W023-206	SPIROLOX SNAP RING
831	1	W62-49-11	DOUBLE LIP SEAL
850	1	400-00682	BEARING SPACER
850	1	565-01194	1/4" ORB HOLLOW HEX PLUG
850	2	921-00427-P	197 HIGH PRESSURE BUSHING

Shaft End cover Small Parts Codes

Code	QTY	Part Number	Description
850	2	L-0280-K	CHECK VALVE
850	1	W023-206	SPIROLOX SNAP RING
850	1	W62-49-11	DOUBLE LIP SEAL
867	1	400-00682	BEARING SPACER
867	1	565-01194	1/4" ORB HOLLOW HEX PLUG
867	2	921-00427-P	197 HIGH PRESSURE BUSHING
867	2	L-0280-K	CHECK VALVE
867	1	W023-206	SPIROLOX SNAP RING
867	1	W62-49-11	DOUBLE LIP SEAL
883	1	400-00682	BEARING SPACER
883	1	565-01194	1/4" ORB HOLLOW HEX PLUG
883	2	921-00427-P	197 HIGH PRESSURE BUSHING
883	2	L-0280-K	CHECK VALVE
883	1	W023-206	SPIROLOX SNAP RING
883	1	W62-49-11	DOUBLE LIP SEAL
885	1	565-01194	1/4" ORB HOLLOW HEX PLUG
885	2	921-00427-P	197 HIGH PRESSURE BUSHING
885	2	L-0280-K	CHECK VALVE
885	1	W62-49-11	DOUBLE LIP SEAL
886	1	400-00682	BEARING SPACER
886	1	565-01194	1/4" ORB HOLLOW HEX PLUG
886	2	921-00427-P	197 HIGH PRESSURE BUSHING
886	2	L-0280-K	CHECK VALVE
886	1	W023-206	SPIROLOX SNAP RING
886	1	W62-49-11	DOUBLE LIP SEAL
890	1	400-00682	BEARING SPACER
890	1	565-01194	1/4" ORB HOLLOW HEX PLUG
890	2	921-00427-P	197 HIGH PRESSURE BUSHING
890	2	L-0280-K	CHECK VALVE
890	1	W023-206	SPIROLOX SNAP RING
890	1	W62-49-11	DOUBLE LIP SEAL
Tell-Tale	1	K-2995-109	RETAINER QUAD-RING
Tell-Tale	1	MZ-0961	SEAL RETAINER "TELL-TALE"
Tell-Tale	1	W0-19	PIPE PLUG/SOC HEAD 1/8"-27 NPT
Tell-Tale	1	W023-206	SPIROLOX SNAP RING
Tell-Tale	1	W62-49-18	DOUBLE LIP SEAL

Shaft End cover Small Parts Codes

Code QTY Part Number Description

For tell-tale applications a "D" must follow the P197____.
Shaft end cover must be noted to have machining done for tell-tale drain.
Extra small parts needed for tell-tale unit.

QTY	Part Number	Description
1	MZ-0961-1	SEAL RETAINER "TELL-TALE"
1	W62-26-18	SEAL FOR "TELL-TALE"
1	W023-206	SNAP RING
1	W0-19	PIPE PLUG/SOC HD 1/8-27 NPT
1	K-2995-109	RETAINER QUAD-RING

Code QTY Part Number Description

AH	1	592-00373	Both Bi-Rotation with BLANK Blank Inlet and Blank Outlet
AX	1	592-00373	Both Bi-Rotation with BLANK Blank Inlet and Blank Outlet

Port End Cover Codes

BSPP

Code QTY Part Number Description

WM	1	592-00370-13-23	Pump CCW with BSPP 0.75" Rear Port On The Right inlet and 0.75" Rear Port On The Left outlet
MB	1	592-00370-13-2	Pump CCW with BSPP 1" Rear Port On The Right inlet and 0.75" Rear Port On The Left outlet
WJ	1	592-00370-10-23	Pump CCW with BSPP 1" Rear Port On The Right inlet and 1" Rear Port On The Left outlet
WK	1	592-00370-11-23	Pump CCW with BSPP 1.25" Rear Port On The Right inlet and 1.25" Rear Port On The Left outlet
NB	1	592-00370-14-2	Pump CCW with BSPP 1.25" Rear Port On The Right inlet and 1" Rear Port On The Left outlet
ZM	1	592-00370-13-26	Pump CCW with BSPP 0.75" Rear Port On The Right inlet and 0.75" Side Port On The Left outlet
YM	1	592-00370-13-25	Pump CCW with BSPP 0.75" Side Port On The Right inlet and 0.75" Rear Port On The Left outlet
MD	1	592-00370-13-4	Pump CCW with BSPP 1" Rear Port On The Right inlet and 0.75" Side Port On The Left outlet
ZJ	1	592-00370-10-26	Pump CCW with BSPP 1" Side Port On The Right inlet and 1" Rear Port On The Left outlet
YJ	1	592-00370-10-25	Pump CCW with BSPP 1" Rear Port On The Right inlet and 1" Side Port On The Left outlet
MC	1	592-00370-13-3	Pump CCW with BSPP 1" Side Port On The Right inlet and 0.75" Rear Port On The Left outlet
NC	1	592-00370-14-3	Pump CCW with BSPP 1.25" Side Port On The Right inlet and 1" Rear Port On The Left outlet
ZK	1	592-00370-11-26	Pump CCW with BSPP 1.25" Side Port On The Right inlet and 1.25" Rear Port On The Left outlet
YK	1	592-00370-11-25	Pump CCW with BSPP 1.25" Rear Port On The Right inlet and 1.25" Side Port On The Left outlet
ND	1	592-00370-14-4	Pump CCW with BSPP 1.25" Rear Port On The Right inlet and 1" Side Port On The Left outlet
OC	1	592-00370-15-3	Pump CCW with BSPP 1.5" Side Port On The Right inlet and 1.25" Rear Port On The Left outlet
VM	1	592-00370-13-22	Pump CCW with BSPP 0.75" Side Port On The Right inlet and 0.75" Side Port On The Left outlet
VJ	1	592-00370-10-22	Pump CCW with BSPP 1" Side Port On The Right inlet and 1" Side Port On The Left outlet
MA	1	592-00370-13-1	Pump CCW with BSPP 1" Side Port On The Right inlet and 0.75" Side Port On The Left outlet
VK	1	592-00370-11-22	Pump CCW with BSPP 1.25" Side Port On The Right inlet and 1.25" Side Port On The Left outlet
NA	1	592-00370-14-1	Pump CCW with BSPP 1.25" Side Port On The Right inlet and 1" Side Port On The Left outlet
OA	1	592-00370-15-1	Pump CCW with BSPP 1.5" Side Port On The Right inlet and 1.25" Side Port On The Left outlet
VL	1	592-00370-12-22	Pump CCW with BSPP 1.5" Side Port On The Right inlet and 1.5" Side Port On The Left outlet
MW	1	592-00370-13-23	Pump CW with BSPP 0.75" Rear Port On The Left inlet and 0.75" Rear Port On The Right outlet
JB	1	592-00370-10-2	Pump CW with BSPP 1" Rear Port On The Left inlet and 0.75" Rear Port On The Right outlet
JW	1	592-00370-10-23	Pump CW with BSPP 1" Rear Port On The Left inlet and 1" Rear Port On The Right outlet
KB	1	592-00370-11-2	Pump CW with BSPP 1.25" Rear Port On The Left inlet and 1" Rear Port On The Right outlet

Port End Cover Codes

BSPP

Code QTY Part Number Description

KW	1	592-00370-11-23	Pump CW with BSPP 1.25" Rear Port On The Left inlet and 1.25" Rear Port On The Right outlet
MZ	1	592-00370-13-26	Pump CW with BSPP 0.75" Side Port On The Left inlet and 0.75" Rear Port On The Right outlet
MY	1	592-00370-13-25	Pump CW with BSPP 0.75" Rear Port On The Left inlet and 0.75" Side Port On The Right outlet
JD	1	592-00370-10-4	Pump CW with BSPP 1" Rear Port On The Left inlet and 0.75" Side Port On The Right outlet
JC	1	592-00370-10-3	Pump CW with BSPP 1" Side Port On The Left inlet and 0.75" Rear Port On The Right outlet
JY	1	592-00370-10-25	Pump CW with BSPP 1" Side Port On The Left inlet and 1" Rear Port On The Right outlet
JZ	1	592-00370-10-26	Pump CW with BSPP 1" Rear Port On The Left inlet and 1" Side Port On The Right outlet
KY	1	592-00370-11-25	Pump CW with BSPP 1.25" Side Port On The Left inlet and 1.25" Rear Port On The Right outlet
KD	1	592-00370-11-4	Pump CW with BSPP 1.25" Rear Port On The Left inlet and 1" Side Port On The Right outlet
KC	1	592-00370-11-3	Pump CW with BSPP 1.25" Side Port On The Left inlet and 1" Rear Port On The Right outlet
KZ	1	592-00370-11-26	Pump CW with BSPP 1.25" Rear Port On The Left inlet and 1.25" Side Port On The Right outlet
LC	1	592-00370-12-3	Pump CW with BSPP 1.5" Side Port On The Left inlet and 1.25" Rear Port On The Right outlet
MV	1	592-00370-13-22	Pump CW with BSPP 0.75" Side Port On The Left inlet and 0.75" Side Port On The Right outlet
JV	1	592-00370-10-22	Pump CW with BSPP 1" Side Port On The Left inlet and 1" Side Port On The Right outlet
JA	1	592-00370-10-1	Pump CW with BSPP 1" Side Port On The Left inlet and 0.75" Side Port On The Right outlet
KV	1	592-00370-11-22	Pump CW with BSPP 1.25" Side Port On The Left inlet and 1.25" Side Port On The Right outlet
KA	1	592-00370-11-1	Pump CW with BSPP 1.25" Side Port On The Left inlet and 1" Side Port On The Right outlet
LA	1	592-00370-12-1	Pump CW with BSPP 1.5" Side Port On The Left inlet and 1.25" Side Port On The Right outlet
LV	1	592-00370-12-22	Pump CW with BSPP 1.5" Side Port On The Left inlet and 1.5" Side Port On The Right outlet

Port End Cover Codes

ORB

Code QTY Part Number Description

AB	1	592-00370-1-2	Both CW with ORB Blank Inlet and Blank Outlet
XX	1	592-00352-27-27	Motor with ORB 0.75" Rear Port inlet and 0.75" Rear Port outlet
YY	1	592-00352-28-28	Motor with ORB 1" Rear Port inlet and 1" Rear Port outlet
QQ	1	592-00352-17-17	Motor with ORB 0.75" Side Port inlet and 0.75" Side Port outlet
RR	1	592-00352-18-18	Motor with ORB 1" Side Port inlet and 1" Side Port outlet
SS	1	592-00352-19-19	Motor with ORB 1.25" Side Port inlet and 1.25" Side Port outlet
HJ	1	592-00370-9-6	Pump CCW with ORB 0.5" Rear Port On The Right inlet and Blank Outlet
EB	1	592-00370-5-2	Pump CCW with ORB 0.5" Rear Port On The Left inlet and 0.75" Rear Port On The Right outlet
WE	1	592-00370-5-23	Pump CCW with ORB 0.5" Rear Port On The Left inlet and 0.5" Rear Port On The Left outlet
WA	1	592-00370-1-23	Pump CCW with ORB 0.75" Rear Port On The Left inlet and 0.75" Rear Port On The Right outlet
HK	1	592-00370-9-7	Pump CCW with ORB 0.75" Rear Port On The Right inlet and Blank Outlet
HL	1	592-00370-9-8	Pump CCW with ORB 1" Rear Port On The Right inlet and Blank Outlet
WB	1	592-00370-2-23	Pump CCW with ORB 1" Rear Port On The Left inlet and 1" Rear Port On The Right outlet
FB	1	592-00370-6-2	Pump CCW with ORB 1" Rear Port On The Right inlet and 0.75" Rear Port On The Left outlet
GB	1	592-00370-7-2	Pump CCW with ORB 1" Rear Port On The Left inlet and 1.25" Rear Port On The Right outlet
WC	1	592-00370-3-23	Pump CCW with ORB 1.25" Rear Port On The Left inlet and 1.25" Rear Port On The Right outlet
HM	1	592-00370-9-10	Pump CCW with ORB 1.25" Rear Port On The Right inlet and Blank Outlet
FG	1	592-00370-6-7	Pump CCW with ORB 1.25" Rear Port On The Right inlet and 0.75" Rear Port On The Left outlet
JI	1	592-00370-10-9	Pump CCW with ORB Blank Inlet and 1.25" Rear Port On The Left outlet
HI	1	592-00370-8-9	Pump CCW with ORB Blank Inlet and 1" Rear Port On The Left outlet
FI	1	592-00370-6-9	Pump CCW with ORB Blank Inlet and 0.5" Rear Port On The Left outlet
GI	1	592-00370-7-9	Pump CCW with ORB Blank Inlet and 0.75" Rear Port On The Left outlet
EC	1	592-00370-5-3	Pump CCW with ORB 0.5" Side Port On The Left inlet and 0.75" Side Port On The Right outlet
YE	1	592-00370-5-25	Pump CCW with ORB 0.5" Side Port On The Right inlet and 0.5" Rear Port On The Left outlet
ZE	1	592-00370-5-26	Pump CCW with ORB 0.5" Rear Port On The Right inlet and 0.5" Side Port On The Left outlet
ED	1	592-00370-5-4	Pump CCW with ORB 0.5" Side Port On The Left inlet and 0.75" Rear Port On The Right outlet
ZA	1	592-00370-1-26	Pump CCW with ORB 0.75" Side Port On The Right inlet and 0.75" Rear Port On The Left outlet
YA	1	592-00370-1-25	Pump CCW with ORB 0.75" Rear Port On The Right inlet and 0.75" Side Port On The Left outlet
FD	1	592-00370-6-4	Pump CCW with ORB 1" Rear Port On The Right inlet and 0.75" Side Port On The Left outlet
YB	1	592-00370-2-25	Pump CCW with ORB 1" Rear Port On The Right inlet and 1" Side Port On The Left outlet
ZB	1	592-00370-2-26	Pump CCW with ORB 1" Side Port On The Right inlet and 1" Rear Port On The Left outlet

Port End Cover Codes

ORB

Code QTY Part Number Description

FC	1	592-00370-6-3	Pump CCW with ORB 1" Side Port On The Right inlet and 0.75" Rear Port On The Left outlet
GD	1	592-00370-7-4	Pump CCW with ORB 1.25" Rear Port On The Right inlet and 1" Side Port On The Left outlet
YC	1	592-00370-3-25	Pump CCW with ORB 1.25" Rear Port On The Right inlet and 1.25" Side Port On The Left outlet
GC	1	592-00370-7-3	Pump CCW with ORB 1.25" Side Port On The Right inlet and 1" Rear Port On The Left outlet
RI	1	592-00370-6-0	Pump CCW with ORB 1.25" Side Port On The Right inlet and 0.75" Rear Port On The Left outlet
ZC	1	592-00370-3-26	Pump CCW with ORB 1.25" Side Port On The Right inlet and 1.25" Rear Port On The Left outlet
HC	1	592-00370-8-3	Pump CCW with ORB 1.5" Side Port On The Right inlet and 1.25" Rear Port On The Left outlet
HF	1	592-00370-8-6	Pump CCW with ORB 1.5" Side Port On The Right inlet and 1" Rear Port On The Left outlet
VE	1	592-00370-5-22	Pump CCW with ORB 0.5" Side Port On The Right inlet and 0.5" Side Port On The Left outlet
GJ	1	592-00370-9-1	Pump CCW with ORB 0.5" Side Port On The Right inlet and Blank Outlet
GK	1	592-00370-9-2	Pump CCW with ORB 0.75" Side Port On The Right inlet and Blank Outlet
VA	1	592-00370-1-22	Pump CCW with ORB 0.75" Side Port On The Right inlet and 0.75" Side Port On The Left outlet
EA	1	592-00370-5-1	Pump CCW with ORB 0.75" Side Port On The Right inlet and 0.5" Side Port On The Left outlet
BI	1	592-00370-2-9	Pump CCW with ORB 0.75" Side Port On The Left inlet and Blank Outlet
GL	1	592-00370-9-3	Pump CCW with ORB 1" Side Port On The Right inlet and Blank Outlet
FA	1	592-00370-6-1	Pump CCW with ORB 1" Side Port On The Right inlet and 0.75" Side Port On The Left outlet
VB	1	592-00370-2-22	Pump CCW with ORB 1" Side Port On The Right inlet and 1" Side Port On The Left outlet
GA	1	592-00370-7-1	Pump CCW with ORB 1.25" Side Port On The Right inlet and 1" Side Port On The Left outlet
VC	1	592-00370-3-22	Pump CCW with ORB 1.25" Side Port On The Right inlet and 1.25" Side Port On The Left outlet
FE	1	592-00370-6-5	Pump CCW with ORB 1.25" Side Port On The Right inlet and 0.75" Side Port On The Left outlet
GM	1	592-00370-9-4	Pump CCW with ORB 1.25" Side Port On The Right inlet and Blank Outlet
HA	1	592-00370-8-1	Pump CCW with ORB 1.5" Side Port On The Right inlet and 1.25" Side Port On The Left outlet
HD	1	592-00370-8-4	Pump CCW with ORB 1.5" Side Port On The Right inlet and 1" Side Port On The Left outlet
VD	1	592-00370-4-22	Pump CCW with ORB 1.5" Side Port On The Right inlet and 1.5" Side Port On The Left outlet
GN	1	592-00370-9-5	Pump CCW with ORB 1.5" Side Port On The Right inlet and Blank Outlet
EI	1	592-00370-5-9	Pump CCW with ORB Blank Inlet and 1.5" Side Port On The Left outlet
DI	1	592-00370-4-9	Pump CCW with ORB Blank Inlet and 1.25" Side Port On The Left outlet
CI	1	592-00370-3-9	Pump CCW with ORB Blank Inlet and 1" Side Port On The Left outlet
AI	1	592-00370-1-9	Pump CCW with ORB Blank Inlet and 0.5" Side Port On The Left outlet
EW	1	592-00370-5-23	Pump CW with ORB 0.5" Rear Port On The Left inlet and 0.5" Rear Port On The Right outlet

Port End Cover Codes

ORB

Code QTY Part Number Description

FJ	1	592-00370-9-6	Pump CW with ORB 0.5" Rear Port On The Left inlet and Blank Outlet
AB	1	592-00370-1-2	Pump CW with ORB 0.75" Rear Port On The Left inlet and 0.5" Rear Port On The Right outlet
AW	1	592-00370-1-23	Pump CW with ORB 0.75" Rear Port On The Left inlet and 0.75" Rear Port On The Right outlet
FK	1	592-00370-9-7	Pump CW with ORB 0.75" Rear Port On The Left inlet and Blank Outlet
FL	1	592-00370-9-8	Pump CW with ORB 1" Rear Port On The Left inlet and Blank Outlet
BW	1	592-00370-2-23	Pump CW with ORB 1" Rear Port On The Left inlet and 1" Rear Port On The Right outlet
BB	1	592-00370-2-2	Pump CW with ORB 1" Rear Port On The Left inlet and 0.75" Rear Port On The Right outlet
CW	1	592-00370-3-23	Pump CW with ORB 1.25" Rear Port On The Left inlet and 1.25" Rear Port On The Right outlet
CW	1	592-00370-3-23	Pump CW with ORB 1.25" Rear Port On The Left inlet and 1.25" Rear Port On The Right outlet
CG	1	592-00370-3-7	Pump CW with ORB 1.25" Rear Port On The Left inlet and 0.75" Rear Port On The Right outlet
CB	1	592-00370-3-2	Pump CW with ORB 1.25" Rear Port On The Left inlet and 1" Rear Port On The Right outlet
FM	1	592-00370-9-10	Pump CW with ORB 1.25" Rear Port On The Left inlet and Blank Outlet
IJ	1	592-00370-10-9	Pump CW with ORB Blank Inlet and 1.25" Rear Port On The Right outlet
IF	1	592-00370-6-9	Pump CW with ORB Blank Inlet and 0.5" Rear Port On The Right outlet
IG	1	592-00370-7-9	Pump CW with ORB Blank Inlet and 0.75" Rear Port On The Right outlet
IH	1	592-00370-8-9	Pump CW with ORB Blank Inlet and 1" Rear Port On The Right outlet
EZ	1	592-00370-5-26	Pump CW with ORB 0.5" Side Port On The Left inlet and 0.5" Rear Port On The Right outlet
EY	1	592-00370-5-25	Pump CW with ORB 0.5" Rear Port On The Left inlet and 0.5" Side Port On The Right outlet
AZ	1	592-00370-1-26	Pump CW with ORB 0.75" Rear Port On The Left inlet and 0.75" Side Port On The Right outlet
AD	1	592-00370-1-4	Pump CW with ORB 0.75" Rear Port On The Left inlet and 0.5" Side Port On The Right outlet
FH	1	592-00370-6-8	Pump CW with ORB 0.75" Side Port On The Left inlet and 1.25" Rear Port On The Right outlet
AC	1	592-00370-1-3	Pump CW with ORB 0.75" Side Port On The Left inlet and 0.5" Rear Port On The Right outlet
AY	1	592-00370-1-25	Pump CW with ORB 0.75" Side Port On The Left inlet and 0.75" Rear Port On The Right outlet
BC	1	592-00370-2-3	Pump CW with ORB 1" Side Port On The Left inlet and 0.75" Rear Port On The Right outlet
BD	1	592-00370-2-4	Pump CW with ORB 1" Rear Port On The Left inlet and 0.75" Side Port On The Right outlet
BY	1	592-00370-2-25	Pump CW with ORB 1" Side Port On The Left inlet and 1" Rear Port On The Right outlet
BZ	1	592-00370-2-26	Pump CW with ORB 1" Rear Port On The Left inlet and 1" Side Port On The Right outlet
CH	1	592-00370-3-8	Pump CW with ORB 1.25" Side Port On The Left inlet and 0.75" Rear Port On The Right outlet
CD	1	592-00370-3-4	Pump CW with ORB 1.25" Rear Port On The Left inlet and 1" Side Port On The Right outlet
CY	1	592-00370-3-25	Pump CW with ORB 1.25" Side Port On The Left inlet and 1.25" Rear Port On The Right outlet
QI	1	592-00370-3-0	Pump CW with ORB 1.25" Rear Port On The Left inlet and 0.75" Side Port On The Right outlet

Code QTY Part Number Description

CC	1	592-00370-3-3	Pump CW with ORB 1.25" Side Port On The Left inlet and 1" Rear Port On The Right outlet
CZ	1	592-00370-3-26	Pump CW with ORB 1.25" Rear Port On The Left inlet and 1.25" Side Port On The Right outlet
DF	1	592-00370-4-6	Pump CW with ORB 1.5" Side Port On The Left inlet and 1" Rear Port On The Right outlet
DC	1	592-00370-4-3	Pump CW with ORB 1.5" Side Port On The Left inlet and 1.25" Rear Port On The Right outlet
AJ	1	592-00370-9-1	Pump CW with ORB 0.5" Side Port On The Left inlet and Blank Outlet
EV	1	592-00370-5-22	Pump CW with ORB 0.5" Side Port On The Left inlet and 0.5" Side Port On The Right outlet
AA	1	592-00370-1-1	Pump CW with ORB 0.75" Side Port On The Left inlet and 0.5" Side Port On The Right outlet
AK	1	592-00370-9-2	Pump CW with ORB 0.75" Side Port On The Left inlet and Blank Outlet
AV	1	592-00370-1-22	Pump CW with ORB 0.75" Side Port On The Left inlet and 0.75" Side Port On The Right outlet
AL	1	592-00370-9-3	Pump CW with ORB 1" Side Port On The Left inlet and Blank Outlet
BA	1	592-00370-2-1	Pump CW with ORB 1" Side Port On The Left inlet and 0.75" Side Port On The Right outlet
BV	1	592-00370-2-22	Pump CW with ORB 1" Side Port On The Left inlet and 1" Side Port On The Right outlet
CA	1	592-00370-3-1	Pump CW with ORB 1.25" Side Port On The Left inlet and 1" Side Port On The Right outlet
CV	1	592-00370-3-22	Pump CW with ORB 1.25" Side Port On The Left inlet and 1.25" Side Port On The Right outlet
CE	1	592-00370-3-5	Pump CW with ORB 1.25" Side Port On The Left inlet and 0.75" Side Port On The Right outlet
AM	1	592-00370-9-4	Pump CW with ORB 1.25" Side Port On The Left inlet and Blank Outlet
AN	1	592-00370-9-5	Pump CW with ORB 1.5" Side Port On The Left inlet and Blank Outlet
DV	1	592-00370-4-22	Pump CW with ORB 1.5" Side Port On The Left inlet and 1.5" Side Port On The Right outlet
DB	1	592-00370-4-2	Pump CW with ORB 1.5" Side Port On The Left inlet and 1" Side Port On The Right outlet
DA	1	592-00370-4-1	Pump CW with ORB 1.5" Side Port On The Left inlet and 1.25" Side Port On The Right outlet
IE	1	592-00370-5-9	Pump CW with ORB Blank Inlet and 1.5" Side Port On The Right outlet
IA	1	592-00370-1-9	Pump CW with ORB Blank Inlet and 0.5" Side Port On The Right outlet
ID	1	592-00370-4-9	Pump CW with ORB Blank Inlet and 1.25" Side Port On The Right outlet
IB	1	592-00370-2-9	Pump CW with ORB Blank Inlet and 0.75" Side Port On The Right outlet
IC	1	592-00370-3-9	Pump CW with ORB Blank Inlet and 1" Side Port On The Right outlet

Code QTY Part Number Description

UU	1	592-00352-21-21	Motor with SF 0.75" Side Port inlet and 0.75" Side Port outlet
VV		592-00352-22-22	Motor with SF 1" Side Port inlet and 1" Side Port outlet
WW	1	592-00352-23-23	Motor with SF 1.25" Side Port inlet and 1.25" Side Port outlet
KJ	1	592-00370-9-11	Pump CCW with SF 0.5" Side Port On The Right inlet and Blank Outlet
VP	1	592-00370-16-22	Pump CCW with SF 0.5" Side Port On The Right inlet and 0.5" Side Port On The Left outlet
KK	1	592-00370-9-12	Pump CCW with SF 0.75" Side Port On The Right inlet and Blank Outlet
PH	1	592-00370-16-8	Pump CCW with SF 0.75" Side Port On The Right inlet and 0.5" Side Port On The Left outlet
WP	1	592-00370-16-23	Pump CCW with SF 0.75" Side Port On The Right inlet and 0.75" Side Port On The Left outlet
KL	1	592-00370-9-13	Pump CCW with SF 1" Side Port On The Right inlet and Blank Outlet
PK	1	592-00370-16-11	Pump CCW with SF 1" Side Port On The Right inlet and 0.75" Side Port On The Left outlet
PJ	1	592-00370-16-10	Pump CCW with SF 1" Side Port On The Right inlet and 0.5" Side Port On The Left outlet
XP	1	592-00370-16-24	Pump CCW with SF 1" Side Port On The Right inlet and 1" Side Port On The Left outlet
PL	1	592-00370-16-12	Pump CCW with SF 1.25" Side Port On The Right inlet and 0.75" Side Port On The Left outlet
PM	1	592-00370-16-13	Pump CCW with SF 1.25" Side Port On The Right inlet and 1" Side Port On The Left outlet
KM	1	592-00370-9-14	Pump CCW with SF 1.25" Side Port On The Right inlet and Blank Outlet
YP	1	592-00370-16-25	Pump CCW with SF 1.25" Side Port On The Right inlet and 1.25" Side Port On The Left outlet
PN	1	592-00370-16-14	Pump CCW with SF 1.5" Side Port On The Right inlet and 1" Side Port On The Left outlet
PO	1	592-00370-16-15	Pump CCW with SF 1.5" Side Port On The Right inlet and 1.25" Side Port On The Left outlet
ZP	1	592-00370-16-26	Pump CCW with SF 1.5" Side Port On The Right inlet and 1.5" Side Port On The Left outlet
KN	1	592-00370-9-15	Pump CCW with SF 1.5" Side Port On The Right inlet and Blank Outlet
LI	1	592-00370-12-9	Pump CCW with SF Blank Inlet and 0.75" Side Port On The Left outlet
KI	1	592-00370-11-9	Pump CCW with SF Blank Inlet and 0.5" Side Port On The Left outlet
NI	1	592-00370-14-9	Pump CCW with SF Blank Inlet and 1.25" Side Port On The Left outlet
OI	1	592-00370-15-9	Pump CCW with SF Blank Inlet and 1.5" Side Port On The Left outlet
MI	1	592-00370-13-9	Pump CCW with SF Blank Inlet and 1" Side Port On The Left outlet
PV	1	592-00370-16-22	Pump CW with SF 0.5" Side Port On The Left inlet and 0.5" Side Port On The Right outlet
JJ	1	592-00370-9-11	Pump CW with SF 0.5" Side Port On The Left inlet and Blank Outlet
PA	1	592-00370-16-1	Pump CW with SF 0.75" Side Port On The Left inlet and 0.5" Side Port On The Right outlet
PW	1	592-00370-16-23	Pump CW with SF 0.75" Side Port On The Left inlet and 0.75" Side Port On The Right outlet
JK	1	592-00370-9-12	Pump CW with SF 0.75" Side Port On The Left inlet and Blank Outlet
JL	1	592-00370-9-13	Pump CW with SF 1" Side Port On The Left inlet and Blank Outlet
PX	1	592-00370-16-24	Pump CW with SF 1" Side Port On The Left inlet and 1" Side Port On The Right outlet
PC	1	592-00370-16-3	Pump CW with SF 1" Side Port On The Left inlet and 0.75" Side Port On The Right outlet
PB	1	592-00370-16-2	Pump CW with SF 1" Side Port On The Left inlet and 0.5" Side Port On The Right outlet
PY	1	592-00370-16-25	Pump CW with SF 1.25" Side Port On The Left inlet and 1.25" Side Port On The Right outlet

Port End Cover Codes

SF

Code QTY Part Number Description

PE	1	592-00370-16-5	Pump CW with SF 1.25" Side Port On The Left inlet and 1" Side Port On The Right outlet
JM	1	592-00370-9-14	Pump CW with SF 1.25" Side Port On The Left inlet and Blank Outlet
PD	1	592-00370-16-4	Pump CW with SF 1.25" Side Port On The Left inlet and 0.75" Side Port On The Right outlet
PF	1	592-00370-16-6	Pump CW with SF 1.5" Side Port On The Left inlet and 1" Side Port On The Right outlet
PZ	1	592-00370-16-26	Pump CW with SF 1.5" Side Port On The Left inlet and 1.5" Side Port On The Right outlet
JN	1	592-00370-9-15	Pump CW with SF 1.5" Side Port On The Left inlet and Blank Outlet
PG	1	592-00370-16-7	Pump CW with SF 1.5" Side Port On The Left inlet and 1.25" Side Port On The Right outlet
IL	1	592-00370-12-9	Pump CW with SF Blank Inlet and 0.75" Side Port On The Right outlet
IM	1	592-00370-13-9	Pump CW with SF Blank Inlet and 1" Side Port On The Right outlet
IN	1	592-00370-14-9	Pump CW with SF Blank Inlet and 1.25" Side Port On The Right outlet
IO	1	592-00370-15-9	Pump CW with SF Blank Inlet and 1.5" Side Port On The Right outlet
IK	1	592-00370-11-9	Pump CW with SF Blank Inlet and 0.5" Side Port On The Right outlet

Port End cover Small Parts Codes

Code	QTY	Part Number	Description
ALL	2	921-00427-P	197 HIGH PRESSURE BUSHING

Transition Port End cover Codes

Code QTY Part Number Description

1	592-01564-1	197 / 124 TRANSITION PORT END COVER, CCW
1	022-01565	197-124 CONNECTING SHAFT
2	921-00427-P	197 HIGH PRESSURE BUSHING
2	921-01108	124 HIGH PRESSURE BUSHING
1	592-01564-0	197 / 124 TRANSITION PORT END COVER, CW
1	022-01565	197-124 CONNECTING SHAFT
2	921-00427-P	197 HIGH PRESSURE BUSHING
2	921-01108	124 HIGH PRESSURE BUSHING

Add-A-Pump Port End cover Codes

Code QTY Part Number Description

1	592-01440-1	ADD-A-PUMP PORT END COVER SAE "A", CCW
1	022-01442	CONNECTING SHAFT, A SPLINE
1	921-01281	BALL BEARING
1	565-01282	RETAINING RING
2	921-00427-P	197 HIGH PRESSURE BUSHING
1	W62-26-17	SHAFT SEAL
1	565-01194	1/4" ORB PLUG
1	592-01440-0	ADD-A-PUMP PORT END COVER SAE "A", CW
1	022-01442	CONNECTING SHAFT, A SPLINE
1	921-01281	BALL BEARING
1	565-01282	RETAINING RING
2	921-00427-P	197 HIGH PRESSURE BUSHING
1	W62-26-17	SHAFT SEAL
1	565-01194	1/4" ORB PLUG

Gear Housing Codes

Code	QTY	Part Number	Description
ZA05	1	577-00369-05	1.00" wide Pump gear housing for 0.5" gear
ZA06	1	577-00369-06	1.125" wide Pump gear housing for 0.625" gear
ZA07	1	577-00369-07	1.25" wide Pump gear housing for 0.75" gear
ZA08	1	577-00369-08	1.375" wide Pump gear housing for 0.875" gear
ZA10	1	577-00369-10	1.50" wide Pump gear housing for 1" gear
ZA11	1	577-00369-11	1.625" wide Pump gear housing for 1.125" gear
ZA12	1	577-00369-12	1.750" wide Pump gear housing for 1.25" gear
ZA15	1	577-00369-15	2.00" wide Pump gear housing for 1.5" gear
ZA16	1	577-00369-16	2.125" wide Pump gear housing for 1.625" gear
ZA17	1	577-00369-17	2.25" wide Pump gear housing for 1.75" gear
ZA20	1	577-00369-20	2.50" wide Pump gear housing for 2" gear
DA05	1	577-01354-05	1.00" wide Motor gear housing for 0.5" gear
DA07	1	577-01354-07	1.25" wide Motor gear housing for 0.75" gear
DA10	1	577-01354-10	1.50" wide Motor gear housing for 1" gear
DA12	1	577-01354-12	1.75" wide Motor gear housing for 1.25" gear
DA15	1	577-01354-15	2.00" wide Motor gear housing for 1.5" gear
DA17	1	577-01354-17	2.25" wide Motor gear housing for 1.75" gear
DA20	1	577-01354-20	2.50" wide Motor gear housing for 2" gear

Gear Housing Small Parts Codes

Code	QTY	Part Number	Description
ALL	4	280-1971-032	197 DOWELL PIN
ALL	2	947-00365-TP	197 THRUST PLATE (PUMP)
ALL	2	947-00372-WSR	197 THRUST PLATE SEAL (PUMP)
ALL	2	947-00374-WBR	197 THRUST PLATE BACK-UP (PUMP)
ALL	2	TA-2995-242	197 HOUSING GASKET SEAL (PUMP)
ALL	2	280-1770-929	197 MOTOR THRUST PLATE BACK-UP (MOTOR)
ALL	4	280-1770-930	197 MOTOR THRUST PLATE END SEALS (MOTOR)
ALL	4	280-1770-931	197 MOTOR THRUST PLATE SIDE SEALS (MOTOR)
ALL	4	280-1971-032	197 DOWELL PIN
ALL	2	947-01348	197 MOTOR THRUST PLATE (MOTOR)
ALL	2	TA-2995-241	197 HOUSING GASKET SEAL (MOTOR)

Gear Shaft Codes

Integral

Code QTY Part Number Description

54	1	024-01489-17	Type II Gear Set With 1.75" Gear Width and SAE "B" (7/8"- 13 TOOTH) SPLINE with 1.625" Shaft Extension ,Used In SINGLE Section Units
54	1	024-01489-16	Type II Gear Set With 1.625" Gear Width and SAE "B" (7/8"- 13 TOOTH) SPLINE with 1.625" Shaft Extension ,Used In SINGLE Section Units
54	1	024-01489-15	Type II Gear Set With 1.5" Gear Width and SAE "B" (7/8"- 13 TOOTH) SPLINE with 1.625" Shaft Extension ,Used In SINGLE Section Units
48	1	024-01274-15	Gear Set With 1.5" Gear Width and W/M14 x 1.5" EXTERNAL THREAD TAPERED
48	1	024-01274-12	Gear Set With 1.25" Gear Width and W/M14 x 1.5" EXTERNAL THREAD TAPERED
48	1	024-01274-10	Gear Set With 1" Gear Width and W/M14 x 1.5" EXTERNAL THREAD TAPERED
48	1	024-01274-07	Gear Set With 0.75" Gear Width and W/M14 x 1.5" EXTERNAL THREAD TAPERED
14	1	414-380-11	Gear Set With 1.125" Gear Width and SAE "B" (7/8"- 13 TOOTH) SPLINE with 1.625" Shaft Extension
87	1	419-380-20	Type I Gear Set With 2" Gear Width and SAE "BB" (1"- 15 TOOTH) SPLINE with 1.8125" Shaft Extension ,Used In MULTIPLE Section Units
87	1	419-380-17	Type I Gear Set With 1.75" Gear Width and SAE "BB" (1"- 15 TOOTH) SPLINE with 1.8125" Shaft Extension ,Used In MULTIPLE Section Units
87	1	419-380-15	Type I Gear Set With 1.5" Gear Width and SAE "BB" (1"- 15 TOOTH) SPLINE with 1.8125" Shaft Extension ,Used In MULTIPLE Section Units
87	1	419-380-12	Type I Gear Set With 1.25" Gear Width and SAE "BB" (1"- 15 TOOTH) SPLINE with 1.8125" Shaft Extension ,Used In MULTIPLE Section Units
87	1	419-380-10	Type I Gear Set With 1" Gear Width and SAE "BB" (1"- 15 TOOTH) SPLINE with 1.8125" Shaft Extension ,Used In MULTIPLE Section Units
87	1	419-380-07	Type I Gear Set With 0.75" Gear Width and SAE "BB" (1"- 15 TOOTH) SPLINE with 1.8125" Shaft Extension ,Used In MULTIPLE Section Units
54	1	024-01672-15	Type II Gear Set With 1.5" Gear Width and SAE "B" (7/8"- 13 TOOTH) SPLINE with 1.625" Shaft Extension ,Used In MULTIPLE Section Units
32	1	418-380-20	Type I Gear Set With 2" Gear Width and SAE "BB" (1") KEYED with 1.9375" Shaft Extension ,Used In MULTIPLE Section Units
32	1	418-380-17	Type I Gear Set With 1.75" Gear Width and SAE "BB" (1") KEYED with 1.9375" Shaft Extension ,Used In MULTIPLE Section Units
32	1	418-380-15	Type I Gear Set With 1.5" Gear Width and SAE "BB" (1") KEYED with 1.9375" Shaft Extension ,Used In MULTIPLE Section Units
32	1	418-380-12	Type I Gear Set With 1.25" Gear Width and SAE "BB" (1") KEYED with 1.9375" Shaft Extension ,Used In MULTIPLE Section Units
32	1	418-380-07	Type I Gear Set With 0.75" Gear Width and SAE "BB" (1") KEYED with 1.9375" Shaft Extension ,Used In MULTIPLE Section Units
29	1	415-380-12	Type I Gear Set With 1.25" Gear Width and SAE "B" (7/8") KEYED with 1.625" Shaft Extension ,Used In MULTIPLE Section Units
29	1	415-380-10	Type I Gear Set With 1" Gear Width and SAE "B" (7/8") KEYED with 1.625" Shaft Extension ,Used In MULTIPLE Section Units
29	1	415-380-07	Type I Gear Set With 0.75" Gear Width and SAE "B" (7/8") KEYED with 1.625" Shaft Extension ,Used In MULTIPLE Section Units
29	1	415-380-05	Type I Gear Set With 0.5" Gear Width and SAE "B" (7/8") KEYED with 1.625" Shaft Extension ,Used In MULTIPLE Section Units
14	1	414-380-20	Type I Gear Set With 2" Gear Width and SAE "B" (7/8"- 13 TOOTH) SPLINE with 1.625" Shaft Extension ,Used In MULTIPLE Section Units
14	1	414-380-17	Type I Gear Set With 1.75" Gear Width and SAE "B" (7/8"- 13 TOOTH) SPLINE with 1.625" Shaft Extension ,Used In MULTIPLE Section Units
14	1	414-380-15	Type I Gear Set With 1.5" Gear Width and SAE "B" (7/8"- 13 TOOTH) SPLINE with 1.625" Shaft Extension ,Used In MULTIPLE Section Units

Gear Shaft Codes

Integral

Code QTY Part Number Description

14	1	414-380-12	Type I Gear Set With 1.25" Gear Width and SAE "B" (7/8"- 13 TOOTH) SPLINE with 1.625" Shaft Extension ,Used In MULTIPLE Section Units
14	1	414-380-10	Type I Gear Set With 1" Gear Width and SAE "B" (7/8"- 13 TOOTH) SPLINE with 1.625" Shaft Extension ,Used In MULTIPLE Section Units
14	1	414-380-07	Type I Gear Set With 0.75" Gear Width and SAE "B" (7/8"- 13 TOOTH) SPLINE with 1.625" Shaft Extension ,Used In MULTIPLE Section Units

Code QTY Part Number Description

20	1	996-00380-20	Gear Set with 2" Gear Width
17	1	996-00380-17	Gear Set with 1.875" Gear Width
17	1	996-00380-17	Gear Set with 1.75" Gear Width
15	1	996-00380-15	Gear Set with 1.5" Gear Width
12	1	996-00380-12	Gear Set with 1.25" Gear Width
10	1	996-00380-10	Gear Set with 1" Gear Width
07	1	996-00380-07	Gear Set with 0.75" Gear Width
06	1	996-00380-06	Gear Set with 0.625" Gear Width
05	1	996-00380-05	Gear Set with 0.5" Gear Width

Continental Shaft Codes

Code QTY Part Number Description

C 6	1	ZG-0024	SAE "C" (1-1/4"- 14 TOOTH) SPLINE shaft with 2.1875" Shaft Extension
C00	2	ZQ-0024	SAE "C" (1-1/4") KEYED shaft with 2.1875" Shaft Extension
C04	1	ZW-0024	SAE "B" (7/8"- 13 TOOTH) KEYED shaft with 2.5312" Shaft Extension
C14	1	ZI-0024	SAE "B" (7/8"- 13 TOOTH) SPLINE shaft with 1.625" Shaft Extension
C19	1	023-00979	SAE "AH" (3/4") SPLINE shaft with 1.5" Shaft Extension
C21	1	ZP-0024	0.875" Diameter TAPERED shaft with 2.25" Shaft Extension
C22	1	024-00409-HF	Fish Pump FISH PUMP shaft with 2.8125" Shaft Extension
C24	1	ZU-0024	SAE "AH" (3/4") KEYED shaft with 2.375" Shaft Extension
C29	1	ZJ-0024	SAE "B" (7/8") KEYED shaft with 1.625" Shaft Extension
C29XL	1	ZJ-0024-XL	SAE "B" (7/8"- 13 TOOTH) KEYED shaft with 2.75" Shaft Extension
C32	1	DC-0024	SAE "BB" (1") KEYED shaft with 1.9375" Shaft Extension
C32XL	1	DC-0024-XL	SAE "BB" (1"- 15 TOOTH) KEYED shaft with 2.8281" Shaft Extension
C57	1	BC-0024	1" Diameter -6 Tooth SPLINE shaft with 1.625" Shaft Extension
C84	1	ZH-0024	SAE "A" (5/8"- 9 TOOTH) SPLINE shaft with 1.25" Shaft Extension
C87	1	ZT-0024	SAE "BB" (1"- 15 TOOTH) SPLINE shaft with 1.8125" Shaft Extension
CM1	1	024-00513	25mm Diameter KEYED shaft with 2.130" Shaft Extension

Drive Shaft Small Parts

Code	QTY	Part Number	Description	Type
14	1	SP-1000-8	SHAFT PROTECTOR	Integral
29	1	SP-1000-8	SHAFT PROTECTOR	Integral
29	1	W09-06	1/4" X 3/8" X 1" KEY	Integral
32	1	SP-1000-3	SHAFT PROTECTOR	Integral
32	1	W09-02	1/4" X 3/8" X 1-1/4" KEY	Integral
48	1	009-01258	WOODRUFF KEY DIN 6888, 4 X 7.5 MM	Integral
48	1	900-01259	SPLIT LOCK WASHER, 14 MM	Integral
48	1	900-01260	HEX NUT, M14 X 1.5	Integral
48	1	SP-1000-3	SHAFT PROTECTOR	Integral
87	1	SP-1000-3	SHAFT PROTECTOR	Integral
C 6	1	SA-0558	SPACER	Continental
C 6	1	SP-1000-4	SHAFT PROTECTOR	Continental
C 6	1	W86-100	SNAP RING	Continental
C 6	1	ZD-0558	SEAL RETAINER	Continental
C00	1	SA-0558	SPACER	Continental
C00	1	SP-1000-5	SHAFT PROTECTOR	Continental
C00	1	W09-27	5/16" X 15/32" X 1-1/2" Key	Continental
C00	1	W86-100	SNAP RING	Continental
C00	1	ZD-0558	SEAL RETAINER	Continental
C04	1	SA-0558	SPACER	Continental
C04	1	SP-1000-8	SHAFT PROTECTOR	Continental
C04	1	W09-38	1/4" X 3/8" X 7/8" Key	Continental
C04	1	W86-100	SNAP RING	Continental
C04	1	ZD-0558	SEAL RETAINER	Continental
C14	1	SA-0558	SPACER	Continental
C14	1	SP-1000-8	SHAFT PROTECTOR	Continental
C14	1	W86-100	SNAP RING	Continental
C14	1	ZD-0558	SEAL RETAINER	Continental
C19	1	SA-0558	SPACER	Continental
C19	1	SP-1000-8	SHAFT PROTECTOR	Continental
C19	1	W86-100	SNAP RING	Continental
C19	1	ZD-0558	SEAL RETAINER	Continental
C21	1	SA-0558	SPACER	Continental
C21	1	SP-1000-8	SHAFT PROTECTOR	Continental
C21	1	W09-505	# 505 WOODRUFF KEY	Continental
C21	1	W86-100	SNAP RING	Continental
C21	1	ZD-0558	SEAL RETAINER	Continental

Drive Shaft Small Parts

Code	QTY	Part Number	Description	Type
C22	1	SA-0558	SPACER	Continental
C22	1	SP-1000-8	SHAFT PROTECTOR	Continental
C22	1	W09-01	1/4" X 3/8" X 1-3/4" Key	Continental
C22	1	W86-100	SNAP RING	Continental
C22	1	ZD-0558	SEAL RETAINER	Continental
C24	1	SA-0558	SPACER	Continental
C24	1	SP-1000-3	SHAFT PROTECTOR	Continental
C24	1	W09-59	3/16" X 3/16" X 1-9/16" Key	Continental
C24	1	W86-100	SNAP RING	Continental
C24	1	ZD-0558	SEAL RETAINER	Continental
C29	1	SA-0558	SPACER	Continental
C29	1	SP-1000-8	SHAFT PROTECTOR	Continental
C29	1	W09-06	1/4" X 3/8" X 1" Key	Continental
C29	1	W86-100	SNAP RING	Continental
C29	1	ZD-0558	SEAL RETAINER	Continental
C29XL	1	SA-0558	SPACER	Continental
C29XL	1	SP-1000-8	SHAFT PROTECTOR	Continental
C29XL	1	W09-01	1/4" X 3/8" X 1-3/4" Key	Continental
C29XL	1	W86-100	SNAP RING	Continental
C29XL	1	ZD-0558	SEAL RETAINER	Continental
C32	1	SA-0558	SPACER	Continental
C32	1	SP-1000-3	SHAFT PROTECTOR	Continental
C32	1	W09-02	1/4" X 3/8" X 1-1/4" Key	Continental
C32	1	W86-100	SNAP RING	Continental
C32	1	ZD-0558	SEAL RETAINER	Continental
C32XL	1	SA-0558	SPACER	Continental
C32XL	1	SP-1000-3	SHAFT PROTECTOR	Continental
C32XL	1	W09-20	1/4" X 1/4" X 1-1/2" Key	Continental
C32XL	1	W86-100	SNAP RING	Continental
C32XL	1	ZD-0558	SEAL RETAINER	Continental
C57	1	SA-0558	SPACER	Continental
C57	1	SP-1000-3	SHAFT PROTECTOR	Continental
C57	1	W86-100	SNAP RING	Continental
C57	1	ZD-0558	SEAL RETAINER	Continental
C84	1	SA-0558	SPACER	Continental
C84	1	SP-1000-7	SHAFT PROTECTOR	Continental
C84	1	ZD-0558	SEAL RETAINER	Continental

Drive Shaft Small Parts

Code	QTY	Part Number	Description	Type
C87	1	SA-0558	SPACER	Continental
C87	1	SP-1000-3	SHAFT PROTECTOR	Continental
C87	1	W86-100	SNAP RING	Continental
C87	1	ZD-0558	SEAL RETAINER	Continental
CM1	1	SA-0558	SPACER	Continental
CM1	1	SP-1000-3	SHAFT PROTECTOR	Continental
CM1	1	W86-100	SNAP RING	Continental
CM1	1	ZD-0558	SEAL RETAINER	Continental

Connecting shaft

Code	QTY	Part Number	Description
1	1	022-00413-CS	CONNECTING SHAFT

Bearing Carrier Codes

BSPP

Code QTY Part Number Description

JMG	1	576-00865-42	CCW Pump Combined Outlet with 1" BSPP inlet and 0.75" BSPP outlet connecting to THRU
JMH	1	576-00865-44	CCW Pump Combined Outlet with 1" BSPP inlet and 1" BSPP outlet connecting to THRU
LMG		576-00865-46	CCW Pump Combined Outlet with 1.25" BSPP inlet and 0.75" BSPP outlet connecting to THRU
LMH	1	576-00865-48	CCW Pump Combined Outlet with 1.25" BSPP inlet and 1" BSPP outlet connecting to THRU
LMI	1	576-00865-50	CCW Pump Combined Outlet with 1.25" BSPP inlet and 1.25" BSPP outlet connecting to THRU
NMG	1	576-00865-52	CCW Pump Combined Outlet with 1.5" BSPP inlet and 0.75" BSPP outlet connecting to THRU
NMH		576-00865-54	CCW Pump Combined Outlet with 1.5" BSPP inlet and 1" BSPP outlet connecting to THRU
NMI	1	576-00865-56	CCW Pump Combined Outlet with 1.5" BSPP inlet and 1.25" BSPP outlet connecting to THRU
NMJ	1	576-00865-58	CCW Pump Combined Outlet with 1.5" BSPP inlet and 1.5" BSPP outlet connecting to THRU
IMG	1	576-00865-42	CW Pump Combined Outlet with 1" BSPP inlet and 0.75" BSPP outlet connecting to THRU
IMH	1	576-00865-44	CW Pump Combined Outlet with 1" BSPP inlet and 1" BSPP outlet connecting to THRU
KMG	1	576-00865-46	CW Pump Combined Outlet with 1.25" BSPP inlet and 0.75" BSPP outlet connecting to THRU
KMH	1	576-00865-48	CW Pump Combined Outlet with 1.25" BSPP inlet and 1" BSPP outlet connecting to THRU
KMI	1	576-00865-50	CW Pump Combined Outlet with 1.25" BSPP inlet and 1.25" BSPP outlet connecting to THRU
MMG	1	576-00865-52	CW Pump Combined Outlet with 1.5" BSPP inlet and 0.75" BSPP outlet connecting to THRU
MMH	1	576-00865-54	CW Pump Combined Outlet with 1.5" BSPP inlet and 1" BSPP outlet connecting to THRU
MMI	1	576-00865-56	CW Pump Combined Outlet with 1.5" BSPP inlet and 1.25" BSPP outlet connecting to THRU
MMJ	1	576-00865-58	CW Pump Combined Outlet with 1.5" BSPP inlet and 1.5" BSPP outlet connecting to THRU
JEA	1	576-00375-10-51	CCW Pump Dual Outlet with 1" BSPP inlet and 0.75" BSPP top outlet connecting to FRONT Plus 1" BSPP bottom outlet connecting to REAR
JFA	1	576-00375-10-61	CCW Pump Dual Outlet with 1" BSPP inlet and 0.75" BSPP top outlet connecting to FRONT Plus 1.25" BSPP bottom outlet connecting to REAR
JDA	1	576-00375-10-41	CCW Pump Dual Outlet with 1" BSPP inlet and 0.75" BSPP top outlet connecting to FRONT Plus 0.75" BSPP bottom outlet connecting to REAR
JEB	1	576-00375-10-52	CCW Pump Dual Outlet with 1" BSPP inlet and 1" BSPP top outlet connecting to FRONT Plus 1" BSPP bottom outlet connecting to REAR
JDB	1	576-00375-10-42	CCW Pump Dual Outlet with 1" BSPP inlet and 1" BSPP top outlet connecting to FRONT Plus 0.75" BSPP bottom outlet connecting to REAR
JFB	1	576-00375-10-62	CCW Pump Dual Outlet with 1" BSPP inlet and 1" BSPP top outlet connecting to FRONT Plus 1.25" BSPP bottom outlet connecting to REAR
JDC	1	576-00375-10-43	CCW Pump Dual Outlet with 1" BSPP inlet and 1.25" BSPP top outlet connecting to FRONT Plus 0.75" BSPP bottom outlet connecting to REAR
JEC	1	576-00375-10-53	CCW Pump Dual Outlet with 1" BSPP inlet and 1.25" BSPP top outlet connecting to FRONT Plus 1" BSPP bottom outlet connecting to REAR
JFC	1	576-00375-10-63	CCW Pump Dual Outlet with 1" BSPP inlet and 1.25" BSPP top outlet connecting to FRONT Plus 1.25" BSPP bottom outlet connecting to REAR
LEA	1	576-00375-12-51	CCW Pump Dual Outlet with 1.25" BSPP inlet and 0.75" BSPP top outlet connecting to FRONT Plus 1" BSPP bottom outlet connecting to REAR
LFA	1	576-00375-12-61	CCW Pump Dual Outlet with 1.25" BSPP inlet and 0.75" BSPP top outlet connecting to FRONT Plus 1.25" BSPP bottom outlet connecting to REAR
LDA	1	576-00375-12-41	CCW Pump Dual Outlet with 1.25" BSPP inlet and 0.75" BSPP top outlet connecting to FRONT Plus 0.75" BSPP bottom outlet connecting to REAR
LFB	1	576-00375-12-62	CCW Pump Dual Outlet with 1.25" BSPP inlet and 1" BSPP top outlet connecting to FRONT Plus 1.25" BSPP bottom outlet connecting to REAR

Bearing Carrier Codes

BSPP

Code QTY Part Number Description

LEB	1	576-00375-12-52	CCW Pump Dual Outlet with 1.25" BSPP inlet and 1" BSPP top outlet connecting to FRONT Plus 1" BSPP bottom outlet connecting to REAR
LDB	1	576-00375-12-42	CCW Pump Dual Outlet with 1.25" BSPP inlet and 1" BSPP top outlet connecting to FRONT Plus 0.75" BSPP bottom outlet connecting to REAR
LEC	1	576-00375-12-53	CCW Pump Dual Outlet with 1.25" BSPP inlet and 1.25" BSPP top outlet connecting to FRONT Plus 1" BSPP bottom outlet connecting to REAR
LDC	1	576-00375-12-43	CCW Pump Dual Outlet with 1.25" BSPP inlet and 1.25" BSPP top outlet connecting to FRONT Plus 0.75" BSPP bottom outlet connecting to REAR
LFC	1	576-00375-12-63	CCW Pump Dual Outlet with 1.25" BSPP inlet and 1.25" BSPP top outlet connecting to FRONT Plus 1.25" BSPP bottom outlet connecting to REAR
NFA	1	576-00375-14-61	CCW Pump Dual Outlet with 1.5" BSPP inlet and 0.75" BSPP top outlet connecting to FRONT Plus 1.25" BSPP bottom outlet connecting to REAR
NEA	1	576-00375-14-51	CCW Pump Dual Outlet with 1.5" BSPP inlet and 0.75" BSPP top outlet connecting to FRONT Plus 1" BSPP bottom outlet connecting to REAR
NDA	1	576-00375-14-41	CCW Pump Dual Outlet with 1.5" BSPP inlet and 0.75" BSPP top outlet connecting to FRONT Plus 0.75" BSPP bottom outlet connecting to REAR
NEB	1	576-00375-14-52	CCW Pump Dual Outlet with 1.5" BSPP inlet and 1" BSPP top outlet connecting to FRONT Plus 1" BSPP bottom outlet connecting to REAR
NDB	1	576-00375-14-42	CCW Pump Dual Outlet with 1.5" BSPP inlet and 1" BSPP top outlet connecting to FRONT Plus 0.75" BSPP bottom outlet connecting to REAR
NFB	1	576-00375-14-62	CCW Pump Dual Outlet with 1.5" BSPP inlet and 1" BSPP top outlet connecting to FRONT Plus 1.25" BSPP bottom outlet connecting to REAR
NDC	1	576-00375-14-43	CCW Pump Dual Outlet with 1.5" BSPP inlet and 1.25" BSPP top outlet connecting to FRONT Plus 0.75" BSPP bottom outlet connecting to REAR
NFC	1	576-00375-14-63	CCW Pump Dual Outlet with 1.5" BSPP inlet and 1.25" BSPP top outlet connecting to FRONT Plus 1.25" BSPP bottom outlet connecting to REAR
NEC	1	576-00375-14-53	CCW Pump Dual Outlet with 1.5" BSPP inlet and 1.25" BSPP top outlet connecting to FRONT Plus 1" BSPP bottom outlet connecting to REAR
IDA	1	576-00375-9-41	CW Pump Dual Outlet with 1" BSPP inlet and 0.75" BSPP top outlet connecting to FRONT Plus 0.75" BSPP bottom outlet connecting to REAR
IFA	1	576-00375-9-61	CW Pump Dual Outlet with 1" BSPP inlet and 0.75" BSPP top outlet connecting to FRONT Plus 1.25" BSPP bottom outlet connecting to REAR
IEA	1	576-00375-9-51	CW Pump Dual Outlet with 1" BSPP inlet and 0.75" BSPP top outlet connecting to FRONT Plus 1" BSPP bottom outlet connecting to REAR
IEB	1	576-00375-9-52	CW Pump Dual Outlet with 1" BSPP inlet and 1" BSPP top outlet connecting to FRONT Plus 1" BSPP bottom outlet connecting to REAR
IDB	1	576-00375-9-42	CW Pump Dual Outlet with 1" BSPP inlet and 1" BSPP top outlet connecting to FRONT Plus 0.75" BSPP bottom outlet connecting to REAR
IFB	1	576-00375-9-62	CW Pump Dual Outlet with 1" BSPP inlet and 1" BSPP top outlet connecting to FRONT Plus 1.25" BSPP bottom outlet connecting to REAR
IFC	1	576-00375-9-63	CW Pump Dual Outlet with 1" BSPP inlet and 1.25" BSPP top outlet connecting to FRONT Plus 1.25" BSPP bottom outlet connecting to REAR
IEC	1	576-00375-9-53	CW Pump Dual Outlet with 1" BSPP inlet and 1.25" BSPP top outlet connecting to FRONT Plus 1" BSPP bottom outlet connecting to REAR
IDC	1	576-00375-9-43	CW Pump Dual Outlet with 1" BSPP inlet and 1.25" BSPP top outlet connecting to FRONT Plus 0.75" BSPP bottom outlet connecting to REAR
KDA	1	576-00375-11-41	CW Pump Dual Outlet with 1.25" BSPP inlet and 0.75" BSPP top outlet connecting to FRONT Plus 0.75" BSPP bottom outlet connecting to REAR
KFA	1	576-00375-11-61	CW Pump Dual Outlet with 1.25" BSPP inlet and 0.75" BSPP top outlet connecting to FRONT Plus 1.25" BSPP bottom outlet connecting to REAR
KEA	1	576-00375-11-51	CW Pump Dual Outlet with 1.25" BSPP inlet and 0.75" BSPP top outlet connecting to FRONT Plus 1" BSPP bottom outlet connecting to REAR

Bearing Carrier Codes

BSPP

Code QTY Part Number Description

KEB	1	576-00375-11-52	CW Pump Dual Outlet with 1.25" BSPP inlet and 1" BSPP top outlet connecting to FRONT Plus 1" BSPP bottom outlet connecting to REAR
KFB	1	576-00375-11-62	CW Pump Dual Outlet with 1.25" BSPP inlet and 1" BSPP top outlet connecting to FRONT Plus 1.25" BSPP bottom outlet connecting to REAR
KDB	1	576-00375-11-42	CW Pump Dual Outlet with 1.25" BSPP inlet and 1" BSPP top outlet connecting to FRONT Plus 0.75" BSPP bottom outlet connecting to REAR
KEC	1	576-00375-11-53	CW Pump Dual Outlet with 1.25" BSPP inlet and 1.25" BSPP top outlet connecting to FRONT Plus 1" BSPP bottom outlet connecting to REAR
KFC	1	576-00375-11-63	CW Pump Dual Outlet with 1.25" BSPP inlet and 1.25" BSPP top outlet connecting to FRONT Plus 1.25" BSPP bottom outlet connecting to REAR
KDC	1	576-00375-11-43	CW Pump Dual Outlet with 1.25" BSPP inlet and 1.25" BSPP top outlet connecting to FRONT Plus 0.75" BSPP bottom outlet connecting to REAR
MDA	1	576-00375-13-41	CW Pump Dual Outlet with 1.5" BSPP inlet and 0.75" BSPP top outlet connecting to FRONT Plus 0.75" BSPP bottom outlet connecting to REAR
MEA	1	576-00375-13-51	CW Pump Dual Outlet with 1.5" BSPP inlet and 0.75" BSPP top outlet connecting to FRONT Plus 1" BSPP bottom outlet connecting to REAR
MFA	1	576-00375-13-61	CW Pump Dual Outlet with 1.5" BSPP inlet and 0.75" BSPP top outlet connecting to FRONT Plus 1.25" BSPP bottom outlet connecting to REAR
MFB	1	576-00375-13-62	CW Pump Dual Outlet with 1.5" BSPP inlet and 1" BSPP top outlet connecting to FRONT Plus 1.25" BSPP bottom outlet connecting to REAR
MEB	1	576-00375-13-52	CW Pump Dual Outlet with 1.5" BSPP inlet and 1" BSPP top outlet connecting to FRONT Plus 1" BSPP bottom outlet connecting to REAR
MDB	1	576-00375-13-42	CW Pump Dual Outlet with 1.5" BSPP inlet and 1" BSPP top outlet connecting to FRONT Plus 0.75" BSPP bottom outlet connecting to REAR
MFC	1	576-00375-13-63	CW Pump Dual Outlet with 1.5" BSPP inlet and 1.25" BSPP top outlet connecting to FRONT Plus 1.25" BSPP bottom outlet connecting to REAR
MDC	1	576-00375-13-43	CW Pump Dual Outlet with 1.5" BSPP inlet and 1.25" BSPP top outlet connecting to FRONT Plus 0.75" BSPP bottom outlet connecting to REAR
MEC	1	576-00375-13-53	CW Pump Dual Outlet with 1.5" BSPP inlet and 1.25" BSPP top outlet connecting to FRONT Plus 1" BSPP bottom outlet connecting to REAR
JXG	1	576-00865-41	CCW Pump Single In Single Out with 1" BSPP inlet and 0.75" BSPP outlet connecting to REAR
JGX	1	576-00865-41	CCW Pump Single In Single Out with 1" BSPP inlet and 0.75" BSPP outlet connecting to FRONT
JXH	1	576-00865-43	CCW Pump Single In Single Out with 1" BSPP inlet and 1" BSPP outlet connecting to REAR
JHX	1	576-00865-43	CCW Pump Single In Single Out with 1" BSPP inlet and 1" BSPP outlet connecting to FRONT
LXG	1	576-00865-45	CCW Pump Single In Single Out with 1.25" BSPP inlet and 0.75" BSPP outlet connecting to REAR
LGX	1	576-00865-45	CCW Pump Single In Single Out with 1.25" BSPP inlet and 0.75" BSPP outlet connecting to FRONT
LHX	1	576-00865-47	CCW Pump Single In Single Out with 1.25" BSPP inlet and 1" BSPP outlet connecting to FRONT
LXH	1	576-00865-47	CCW Pump Single In Single Out with 1.25" BSPP inlet and 1" BSPP outlet connecting to REAR
LIX	1	576-00865-49	CCW Pump Single In Single Out with 1.25" BSPP inlet and 1.25" BSPP outlet connecting to FRONT
LXI	1	576-00865-49	CCW Pump Single In Single Out with 1.25" BSPP inlet and 1.25" BSPP outlet connecting to REAR
NXG	1	576-00865-51	CCW Pump Single In Single Out with 1.5" BSPP inlet and 0.75" BSPP outlet connecting to REAR
NXH	1	576-00865-53	CCW Pump Single In Single Out with 1.5" BSPP inlet and 0.75" BSPP outlet connecting to REAR

Bearing Carrier Codes

BSPP

Code QTY Part Number Description

NGX	1	576-00865-51	CCW Pump Single In Single Out with 1.5" BSPP inlet and 0.75" BSPP outlet connecting to FRONT
NHX	1	576-00865-53	CCW Pump Single In Single Out with 1.5" BSPP inlet and 1" BSPP outlet connecting to FRONT
NIX	1	576-00865-55	CCW Pump Single In Single Out with 1.5" BSPP inlet and 1.25" BSPP outlet connecting to FRONT
NXI	1	576-00865-55	CCW Pump Single In Single Out with 1.5" BSPP inlet and 1.25" BSPP outlet connecting to REAR
NXJ	1	576-00865-57	CCW Pump Single In Single Out with 1.5" BSPP inlet and 1.5" BSPP outlet connecting to REAR
NJX	1	576-00865-57	CCW Pump Single In Single Out with 1.5" BSPP inlet and 1.5" BSPP outlet connecting to FRONT
IGX	1	576-00865-41	CW Pump Single In Single Out with 1" BSPP inlet and 0.75" BSPP outlet connecting to FRONT
IXG	1	576-00865-41	CW Pump Single In Single Out with 1" BSPP inlet and 0.75" BSPP outlet connecting to REAR
IHX	1	576-00865-43	CW Pump Single In Single Out with 1" BSPP inlet and 1" BSPP outlet connecting to FRONT
IXH	1	576-00865-43	CW Pump Single In Single Out with 1" BSPP inlet and 1" BSPP outlet connecting to REAR
KXG	1	576-00865-45	CW Pump Single In Single Out with 1.25" BSPP inlet and 0.75" BSPP outlet connecting to REAR
KGX	1	576-00865-45	CW Pump Single In Single Out with 1.25" BSPP inlet and 0.75" BSPP outlet connecting to FRONT
KXH	1	576-00865-47	CW Pump Single In Single Out with 1.25" BSPP inlet and 1" BSPP outlet connecting to REAR
KHX	1	576-00865-47	CW Pump Single In Single Out with 1.25" BSPP inlet and 1" BSPP outlet connecting to FRONT
KIX	1	576-00865-49	CW Pump Single In Single Out with 1.25" BSPP inlet and 1.25" BSPP outlet connecting to FRONT
KXI	1	576-00865-49	CW Pump Single In Single Out with 1.25" BSPP inlet and 1.25" BSPP outlet connecting to REAR
MGX	1	576-00865-51	CW Pump Single In Single Out with 1.5" BSPP inlet and 0.75" BSPP outlet connecting to FRONT
MXG	1	576-00865-51	CW Pump Single In Single Out with 1.5" BSPP inlet and 0.75" BSPP outlet connecting to REAR
MHX	1	576-00865-53	CW Pump Single In Single Out with 1.5" BSPP inlet and 1" BSPP outlet connecting to FRONT
MXH	1	576-00865-53	CW Pump Single In Single Out with 1.5" BSPP inlet and 1" BSPP outlet connecting to REAR
MIX	1	576-00865-55	CW Pump Single In Single Out with 1.5" BSPP inlet and 1.25" BSPP outlet connecting to FRONT
MXI	1	576-00865-55	CW Pump Single In Single Out with 1.5" BSPP inlet and 1.25" BSPP outlet connecting to REAR
MXJ	1	576-00865-57	CW Pump Single In Single Out with 1.5" BSPP inlet and 1.5" BSPP outlet connecting to REAR
MJX	1	576-00865-57	CW Pump Single In Single Out with 1.5" BSPP inlet and 1.5" BSPP outlet connecting to FRONT

Bearing Carrier Codes

ORB

Code QTY Part Number Description

RML	1	576-00865-60	CCW Pump Combined Outlet with 1" ORB inlet and 0.5" ORB outlet connecting to THRU
RMM	1	576-00865-62	CCW Pump Combined Outlet with 1" ORB inlet and 0.75" ORB outlet connecting to THRU
RMN	1	576-00865-64	CCW Pump Combined Outlet with 1" ORB inlet and 1" ORB outlet connecting to THRU
TML	1	576-00865-66	CCW Pump Combined Outlet with 1.25" ORB inlet and 0.5" ORB outlet connecting to THRU
TMM	1	576-00865-68	CCW Pump Combined Outlet with 1.25" ORB inlet and 0.75" ORB outlet connecting to THRU
TMN	1	576-00865-70	CCW Pump Combined Outlet with 1.25" ORB inlet and 1" ORB outlet connecting to THRU
TMQ	1	576-00865-72	CCW Pump Combined Outlet with 1.25" ORB inlet and 1.25" ORB outlet connecting to THRU
VML	1	576-00865-74	CCW Pump Combined Outlet with 1.5" ORB inlet and 0.5" ORB outlet connecting to THRU
VMM	1	576-00865-76	CCW Pump Combined Outlet with 1.5" ORB inlet and 0.75" ORB outlet connecting to THRU
VMN	1	576-00865-78	CCW Pump Combined Outlet with 1.5" ORB inlet and 1" ORB outlet connecting to THRU
VMQ	1	576-00865-80	CCW Pump Combined Outlet with 1.5" ORB inlet and 1.25" ORB outlet connecting to THRU
VMR	1	576-00865-82	CCW Pump Combined Outlet with 1.5" ORB inlet and 1.5" ORB outlet connecting to THRU
QML	1	576-00865-60	CW Pump Combined Outlet with 1" ORB inlet and 0.5" ORB outlet connecting to THRU
QMM	1	576-00865-62	CW Pump Combined Outlet with 1" ORB inlet and 0.75" ORB outlet connecting to THRU
QMN	1	576-00865-64	CW Pump Combined Outlet with 1" ORB inlet and 1" ORB outlet connecting to THRU
SML	1	576-00865-66	CW Pump Combined Outlet with 1.25" ORB inlet and 0.5" ORB outlet connecting to THRU
SMM	1	576-00865-68	CW Pump Combined Outlet with 1.25" ORB inlet and 0.75" ORB outlet connecting to THRU
SMN	1	576-00865-70	CW Pump Combined Outlet with 1.25" ORB inlet and 1" ORB outlet connecting to THRU
SMQ	1	576-00865-72	CW Pump Combined Outlet with 1.25" ORB inlet and 1.25" ORB outlet connecting to THRU
UML	1	576-00865-74	CW Pump Combined Outlet with 1.5" ORB inlet and 0.5" ORB outlet connecting to THRU
UMM	1	576-00865-76	CW Pump Combined Outlet with 1.5" ORB inlet and 0.75" ORB outlet connecting to THRU
UMN	1	576-00865-78	CW Pump Combined Outlet with 1.5" ORB inlet and 1" ORB outlet connecting to THRU
UMQ	1	576-00865-80	CW Pump Combined Outlet with 1.5" ORB inlet and 1.25" ORB outlet connecting to THRU
UMR	1	576-00865-82	CW Pump Combined Outlet with 1.5" ORB inlet and 1.5" ORB outlet connecting to THRU
RKA	1	576-00375-18-111	CCW Pump Dual Outlet with 1" ORB inlet and 0.5" ORB top outlet connecting to FRONT Plus 1" ORB bottom outlet connecting to REAR
RJA	1	576-00375-18-101	CCW Pump Dual Outlet with 1" ORB inlet and 0.5" ORB top outlet connecting to FRONT Plus 0.75" ORB bottom outlet connecting to REAR
RLA	1	576-00375-18-121	CCW Pump Dual Outlet with 1" ORB inlet and 0.5" ORB top outlet connecting to FRONT Plus 1.25" ORB bottom outlet connecting to REAR
RHA	1	576-00375-18-81	CCW Pump Dual Outlet with 1" ORB inlet and 0.5" ORB top outlet connecting to FRONT Plus 0.5" ORB bottom outlet connecting to REAR
RKB	1	576-00375-18-112	CCW Pump Dual Outlet with 1" ORB inlet and 0.75" ORB top outlet connecting to FRONT Plus 1" ORB bottom outlet connecting to REAR
RLB	1	576-00375-18-122	CCW Pump Dual Outlet with 1" ORB inlet and 0.75" ORB top outlet connecting to FRONT Plus 1.25" ORB bottom outlet connecting to REAR
RHB	1	576-00375-18-82	CCW Pump Dual Outlet with 1" ORB inlet and 0.75" ORB top outlet connecting to FRONT Plus 0.5" ORB bottom outlet connecting to REAR
RJB	1	576-00375-18-102	CCW Pump Dual Outlet with 1" ORB inlet and 0.75" ORB top outlet connecting to FRONT Plus 0.75" ORB bottom outlet connecting to REAR
RKC	1	576-00375-18-113	CCW Pump Dual Outlet with 1" ORB inlet and 1" ORB top outlet connecting to FRONT Plus 1" ORB bottom outlet connecting to REAR

Bearing Carrier Codes

ORB

Code QTY Part Number Description

RLC	1	576-00375-18-123	CCW Pump Dual Outlet with 1" ORB inlet and 1" ORB top outlet connecting to FRONT Plus 1.25" ORB bottom outlet connecting to REAR
RJC	1	576-00375-18-103	CCW Pump Dual Outlet with 1" ORB inlet and 1" ORB top outlet connecting to FRONT Plus 0.75" ORB bottom outlet connecting to REAR
RHC	1	576-00375-18-83	CCW Pump Dual Outlet with 1" ORB inlet and 1" ORB top outlet connecting to FRONT Plus 0.5" ORB bottom outlet connecting to REAR
RLD	1	576-00375-18-124	CCW Pump Dual Outlet with 1" ORB inlet and 1.25" ORB top outlet connecting to FRONT Plus 1.25" ORB bottom outlet connecting to REAR
RJD	1	576-00375-18-104	CCW Pump Dual Outlet with 1" ORB inlet and 1.25" ORB top outlet connecting to FRONT Plus 0.75" ORB bottom outlet connecting to REAR
RHD	1	576-00375-18-84	CCW Pump Dual Outlet with 1" ORB inlet and 1.25" ORB top outlet connecting to FRONT Plus 0.5" ORB bottom outlet connecting to REAR
RKD	1	576-00375-18-114	CCW Pump Dual Outlet with 1" ORB inlet and 1.25" ORB top outlet connecting to FRONT Plus 1" ORB bottom outlet connecting to REAR
TLA	1	576-00375-20-121	CCW Pump Dual Outlet with 1.25" ORB inlet and 0.5" ORB top outlet connecting to FRONT Plus 1.25" ORB bottom outlet connecting to REAR
THA	1	576-00375-20-81	CCW Pump Dual Outlet with 1.25" ORB inlet and 0.5" ORB top outlet connecting to FRONT Plus 0.5" ORB bottom outlet connecting to REAR
TKA	1	576-00375-20-111	CCW Pump Dual Outlet with 1.25" ORB inlet and 0.5" ORB top outlet connecting to FRONT Plus 1" ORB bottom outlet connecting to REAR
TJA	1	576-00375-20-101	CCW Pump Dual Outlet with 1.25" ORB inlet and 0.5" ORB top outlet connecting to FRONT Plus 0.75" ORB bottom outlet connecting to REAR
THB	1	576-00375-20-82	CCW Pump Dual Outlet with 1.25" ORB inlet and 0.75" ORB top outlet connecting to FRONT Plus 0.5" ORB bottom outlet connecting to REAR
TLB	1	576-00375-20-122	CCW Pump Dual Outlet with 1.25" ORB inlet and 0.75" ORB top outlet connecting to FRONT Plus 1.25" ORB bottom outlet connecting to REAR
TJB	1	576-00375-20-102	CCW Pump Dual Outlet with 1.25" ORB inlet and 0.75" ORB top outlet connecting to FRONT Plus 0.75" ORB bottom outlet connecting to REAR
TKB	1	576-00375-20-112	CCW Pump Dual Outlet with 1.25" ORB inlet and 0.75" ORB top outlet connecting to FRONT Plus 1" ORB bottom outlet connecting to REAR
TJC	1	576-00375-20-103	CCW Pump Dual Outlet with 1.25" ORB inlet and 1" ORB top outlet connecting to FRONT Plus 0.75" ORB bottom outlet connecting to REAR
THC	1	576-00375-20-83	CCW Pump Dual Outlet with 1.25" ORB inlet and 1" ORB top outlet connecting to FRONT Plus 0.5" ORB bottom outlet connecting to REAR
TKC	1	576-00375-20-113	CCW Pump Dual Outlet with 1.25" ORB inlet and 1" ORB top outlet connecting to FRONT Plus 1" ORB bottom outlet connecting to REAR
TLC	1	576-00375-20-123	CCW Pump Dual Outlet with 1.25" ORB inlet and 1" ORB top outlet connecting to FRONT Plus 1.25" ORB bottom outlet connecting to REAR
THD	1	576-00375-20-84	CCW Pump Dual Outlet with 1.25" ORB inlet and 1.25" ORB top outlet connecting to FRONT Plus 0.5" ORB bottom outlet connecting to REAR
TLD	1	576-00375-20-124	CCW Pump Dual Outlet with 1.25" ORB inlet and 1.25" ORB top outlet connecting to FRONT Plus 1.25" ORB bottom outlet connecting to REAR
TKD	1	576-00375-20-114	CCW Pump Dual Outlet with 1.25" ORB inlet and 1.25" ORB top outlet connecting to FRONT Plus 1" ORB bottom outlet connecting to REAR
TJD	1	576-00375-20-104	CCW Pump Dual Outlet with 1.25" ORB inlet and 1.25" ORB top outlet connecting to FRONT Plus 0.75" ORB bottom outlet connecting to REAR
VHA	1	576-00375-22-81	CCW Pump Dual Outlet with 1.5" ORB inlet and 0.5" ORB top outlet connecting to FRONT Plus 0.5" ORB bottom outlet connecting to REAR
VJA	1	576-00375-22-101	CCW Pump Dual Outlet with 1.5" ORB inlet and 0.5" ORB top outlet connecting to FRONT Plus 0.75" ORB bottom outlet connecting to REAR
VKA	1	576-00375-22-111	CCW Pump Dual Outlet with 1.5" ORB inlet and 0.5" ORB top outlet connecting to FRONT Plus 1" ORB bottom outlet connecting to REAR

Bearing Carrier Codes

ORB

Code QTY Part Number Description

VLA	1	576-00375-22-121	CCW Pump Dual Outlet with 1.5" ORB inlet and 0.5" ORB top outlet connecting to FRONT Plus 1.25" ORB bottom outlet connecting to REAR
VLB	1	576-00375-22-122	CCW Pump Dual Outlet with 1.5" ORB inlet and 0.75" ORB top outlet connecting to FRONT Plus 1.25" ORB bottom outlet connecting to REAR
VHB	1	576-00375-22-82	CCW Pump Dual Outlet with 1.5" ORB inlet and 0.75" ORB top outlet connecting to FRONT Plus 0.5" ORB bottom outlet connecting to REAR
VJB	1	576-00375-22-102	CCW Pump Dual Outlet with 1.5" ORB inlet and 0.75" ORB top outlet connecting to FRONT Plus 0.75" ORB bottom outlet connecting to REAR
VKB	1	576-00375-22-112	CCW Pump Dual Outlet with 1.5" ORB inlet and 0.75" ORB top outlet connecting to FRONT Plus 1" ORB bottom outlet connecting to REAR
VJC	1	576-00375-22-103	CCW Pump Dual Outlet with 1.5" ORB inlet and 1" ORB top outlet connecting to FRONT Plus 0.75" ORB bottom outlet connecting to REAR
VHC	1	576-00375-22-83	CCW Pump Dual Outlet with 1.5" ORB inlet and 1" ORB top outlet connecting to FRONT Plus 0.5" ORB bottom outlet connecting to REAR
VLC	1	576-00375-22-123	CCW Pump Dual Outlet with 1.5" ORB inlet and 1" ORB top outlet connecting to FRONT Plus 1.25" ORB bottom outlet connecting to REAR
VKC	1	576-00375-22-113	CCW Pump Dual Outlet with 1.5" ORB inlet and 1" ORB top outlet connecting to FRONT Plus 1" ORB bottom outlet connecting to REAR
VLD	1	576-00375-22-124	CCW Pump Dual Outlet with 1.5" ORB inlet and 1.25" ORB top outlet connecting to FRONT Plus 1.25" ORB bottom outlet connecting to REAR
VKD	1	576-00375-22-114	CCW Pump Dual Outlet with 1.5" ORB inlet and 1.25" ORB top outlet connecting to FRONT Plus 1" ORB bottom outlet connecting to REAR
VJD	1	576-00375-22-104	CCW Pump Dual Outlet with 1.5" ORB inlet and 1.25" ORB top outlet connecting to FRONT Plus 0.75" ORB bottom outlet connecting to REAR
VHD	1	576-00375-22-84	CCW Pump Dual Outlet with 1.5" ORB inlet and 1.25" ORB top outlet connecting to FRONT Plus 0.5" ORB bottom outlet connecting to REAR
QHA	1	576-00375-17-81	CW Pump Dual Outlet with 1" ORB inlet and 0.5" ORB top outlet connecting to FRONT Plus 0.5" ORB bottom outlet connecting to REAR
QKA	1	576-00375-17-111	CW Pump Dual Outlet with 1" ORB inlet and 0.5" ORB top outlet connecting to FRONT Plus 1" ORB bottom outlet connecting to REAR
QJA	1	576-00375-17-101	CW Pump Dual Outlet with 1" ORB inlet and 0.5" ORB top outlet connecting to FRONT Plus 0.75" ORB bottom outlet connecting to REAR
QLA	1	576-00375-17-121	CW Pump Dual Outlet with 1" ORB inlet and 0.5" ORB top outlet connecting to FRONT Plus 1.25" ORB bottom outlet connecting to REAR
QJB	1	576-00375-17-102	CW Pump Dual Outlet with 1" ORB inlet and 0.75" ORB top outlet connecting to FRONT Plus 0.75" ORB bottom outlet connecting to REAR
QKB	1	576-00375-17-112	CW Pump Dual Outlet with 1" ORB inlet and 0.75" ORB top outlet connecting to FRONT Plus 1" ORB bottom outlet connecting to REAR
QHB	1	576-00375-17-82	CW Pump Dual Outlet with 1" ORB inlet and 0.75" ORB top outlet connecting to FRONT Plus 0.5" ORB bottom outlet connecting to REAR
QLB	1	576-00375-17-122	CW Pump Dual Outlet with 1" ORB inlet and 0.75" ORB top outlet connecting to FRONT Plus 1.25" ORB bottom outlet connecting to REAR
QHC	1	576-00375-17-83	CW Pump Dual Outlet with 1" ORB inlet and 1" ORB top outlet connecting to FRONT Plus 0.5" ORB bottom outlet connecting to REAR
QLC	1	576-00375-17-123	CW Pump Dual Outlet with 1" ORB inlet and 1" ORB top outlet connecting to FRONT Plus 1.25" ORB bottom outlet connecting to REAR
QKC	1	576-00375-17-113	CW Pump Dual Outlet with 1" ORB inlet and 1" ORB top outlet connecting to FRONT Plus 1" ORB bottom outlet connecting to REAR
QJC	1	576-00375-17-103	CW Pump Dual Outlet with 1" ORB inlet and 1" ORB top outlet connecting to FRONT Plus 0.75" ORB bottom outlet connecting to REAR
QHD	1	576-00375-17-84	CW Pump Dual Outlet with 1" ORB inlet and 1.25" ORB top outlet connecting to FRONT Plus 0.5" ORB bottom outlet connecting to REAR

Bearing Carrier Codes

ORB

Code QTY Part Number Description

QJD	1	576-00375-17-104	CW Pump Dual Outlet with 1" ORB inlet and 1.25" ORB top outlet connecting to FRONT Plus 0.75" ORB bottom outlet connecting to REAR
QLD	1	576-00375-17-124	CW Pump Dual Outlet with 1" ORB inlet and 1.25" ORB top outlet connecting to FRONT Plus 1.25" ORB bottom outlet connecting to REAR
QKD	1	576-00375-17-114	CW Pump Dual Outlet with 1" ORB inlet and 1.25" ORB top outlet connecting to FRONT Plus 1" ORB bottom outlet connecting to REAR
SJA	1	576-00375-19-101	CW Pump Dual Outlet with 1.25" ORB inlet and 0.5" ORB top outlet connecting to FRONT Plus 0.75" ORB bottom outlet connecting to REAR
SKA	1	576-00375-19-111	CW Pump Dual Outlet with 1.25" ORB inlet and 0.5" ORB top outlet connecting to FRONT Plus 1" ORB bottom outlet connecting to REAR
SHA	1	576-00375-19-81	CW Pump Dual Outlet with 1.25" ORB inlet and 0.5" ORB top outlet connecting to FRONT Plus 0.5" ORB bottom outlet connecting to REAR
SLA	1	576-00375-19-121	CW Pump Dual Outlet with 1.25" ORB inlet and 0.5" ORB top outlet connecting to FRONT Plus 1.25" ORB bottom outlet connecting to REAR
SJB	1	576-00375-19-102	CW Pump Dual Outlet with 1.25" ORB inlet and 0.75" ORB top outlet connecting to FRONT Plus 0.75" ORB bottom outlet connecting to REAR
SLB	1	576-00375-19-122	CW Pump Dual Outlet with 1.25" ORB inlet and 0.75" ORB top outlet connecting to FRONT Plus 1.25" ORB bottom outlet connecting to REAR
SHB	1	576-00375-19-82	CW Pump Dual Outlet with 1.25" ORB inlet and 0.75" ORB top outlet connecting to FRONT Plus 0.5" ORB bottom outlet connecting to REAR
SKB	1	576-00375-19-112	CW Pump Dual Outlet with 1.25" ORB inlet and 0.75" ORB top outlet connecting to FRONT Plus 1" ORB bottom outlet connecting to REAR
SHC	1	576-00375-19-83	CW Pump Dual Outlet with 1.25" ORB inlet and 1" ORB top outlet connecting to FRONT Plus 0.5" ORB bottom outlet connecting to REAR
SLC	1	576-00375-19-123	CW Pump Dual Outlet with 1.25" ORB inlet and 1" ORB top outlet connecting to FRONT Plus 1.25" ORB bottom outlet connecting to REAR
SKC	1	576-00375-19-113	CW Pump Dual Outlet with 1.25" ORB inlet and 1" ORB top outlet connecting to FRONT Plus 1" ORB bottom outlet connecting to REAR
SJC	1	576-00375-19-103	CW Pump Dual Outlet with 1.25" ORB inlet and 1" ORB top outlet connecting to FRONT Plus 0.75" ORB bottom outlet connecting to REAR
SHD	1	576-00375-19-84	CW Pump Dual Outlet with 1.25" ORB inlet and 1.25" ORB top outlet connecting to FRONT Plus 0.5" ORB bottom outlet connecting to REAR
SKD	1	576-00375-19-114	CW Pump Dual Outlet with 1.25" ORB inlet and 1.25" ORB top outlet connecting to FRONT Plus 1" ORB bottom outlet connecting to REAR
SJD	1	576-00375-19-104	CW Pump Dual Outlet with 1.25" ORB inlet and 1.25" ORB top outlet connecting to FRONT Plus 0.75" ORB bottom outlet connecting to REAR
SLD	1	576-00375-19-124	CW Pump Dual Outlet with 1.25" ORB inlet and 1.25" ORB top outlet connecting to FRONT Plus 1.25" ORB bottom outlet connecting to REAR
UJA	1	576-00375-21-101	CW Pump Dual Outlet with 1.5" ORB inlet and 0.5" ORB top outlet connecting to FRONT Plus 0.75" ORB bottom outlet connecting to REAR
UHA	1	576-00375-21-81	CW Pump Dual Outlet with 1.5" ORB inlet and 0.5" ORB top outlet connecting to FRONT Plus 0.5" ORB bottom outlet connecting to REAR
UKA	1	576-00375-21-111	CW Pump Dual Outlet with 1.5" ORB inlet and 0.5" ORB top outlet connecting to FRONT Plus 1" ORB bottom outlet connecting to REAR
ULA	1	576-00375-21-121	CW Pump Dual Outlet with 1.5" ORB inlet and 0.5" ORB top outlet connecting to FRONT Plus 1.25" ORB bottom outlet connecting to REAR
UHB	1	576-00375-21-82	CW Pump Dual Outlet with 1.5" ORB inlet and 0.75" ORB top outlet connecting to FRONT Plus 0.5" ORB bottom outlet connecting to REAR
UKB	1	576-00375-21-112	CW Pump Dual Outlet with 1.5" ORB inlet and 0.75" ORB top outlet connecting to FRONT Plus 1" ORB bottom outlet connecting to REAR
ULB	1	576-00375-21-122	CW Pump Dual Outlet with 1.5" ORB inlet and 0.75" ORB top outlet connecting to FRONT Plus 1.25" ORB bottom outlet connecting to REAR

Bearing Carrier Codes

ORB

Code QTY Part Number Description

UJB	1	576-00375-21-102	CW Pump Dual Outlet with 1.5" ORB inlet and 0.75" ORB top outlet connecting to FRONT Plus 0.75" ORB bottom outlet connecting to REAR
UHC	1	576-00375-21-83	CW Pump Dual Outlet with 1.5" ORB inlet and 1" ORB top outlet connecting to FRONT Plus 0.5" ORB bottom outlet connecting to REAR
UJC	1	576-00375-21-103	CW Pump Dual Outlet with 1.5" ORB inlet and 1" ORB top outlet connecting to FRONT Plus 0.75" ORB bottom outlet connecting to REAR
UKC	1	576-00375-21-113	CW Pump Dual Outlet with 1.5" ORB inlet and 1" ORB top outlet connecting to FRONT Plus 1" ORB bottom outlet connecting to REAR
ULC	1	576-00375-21-123	CW Pump Dual Outlet with 1.5" ORB inlet and 1" ORB top outlet connecting to FRONT Plus 1.25" ORB bottom outlet connecting to REAR
UJD	1	576-00375-21-104	CW Pump Dual Outlet with 1.5" ORB inlet and 1.25" ORB top outlet connecting to FRONT Plus 0.75" ORB bottom outlet connecting to REAR
UKD	1	576-00375-21-114	CW Pump Dual Outlet with 1.5" ORB inlet and 1.25" ORB top outlet connecting to FRONT Plus 1" ORB bottom outlet connecting to REAR
UHD	1	576-00375-21-84	CW Pump Dual Outlet with 1.5" ORB inlet and 1.25" ORB top outlet connecting to FRONT Plus 0.5" ORB bottom outlet connecting to REAR
ULD	1	576-00375-21-124	CW Pump Dual Outlet with 1.5" ORB inlet and 1.25" ORB top outlet connecting to FRONT Plus 1.25" ORB bottom outlet connecting to REAR
RXL	1	576-00865-59	CCW Pump Single In Single Out with 1" ORB inlet and 0.5" ORB outlet connecting to REAR
RLX	1	576-00865-59	CCW Pump Single In Single Out with 1" ORB inlet and 0.5" ORB outlet connecting to FRONT
RXM	1	576-00865-61	CCW Pump Single In Single Out with 1" ORB inlet and 0.75" ORB outlet connecting to REAR
RMX	1	576-00865-61	CCW Pump Single In Single Out with 1" ORB inlet and 0.75" ORB outlet connecting to FRONT
RNX	1	576-00865-63	CCW Pump Single In Single Out with 1" ORB inlet and 1" ORB outlet connecting to FRONT
RXN	1	576-00865-63	CCW Pump Single In Single Out with 1" ORB inlet and 1" ORB outlet connecting to REAR
TLX	1	576-00865-65	CCW Pump Single In Single Out with 1.25" ORB inlet and 0.5" ORB outlet connecting to FRONT
TXL	1	576-00865-65	CCW Pump Single In Single Out with 1.25" ORB inlet and 0.5" ORB outlet connecting to REAR
TMX	1	576-00865-67	CCW Pump Single In Single Out with 1.25" ORB inlet and 0.75" ORB outlet connecting to FRONT
TXM	1	576-00865-67	CCW Pump Single In Single Out with 1.25" ORB inlet and 0.75" ORB outlet connecting to REAR
TNX	1	576-00865-69	CCW Pump Single In Single Out with 1.25" ORB inlet and 1" ORB outlet connecting to FRONT
TXN	1	576-00865-69	CCW Pump Single In Single Out with 1.25" ORB inlet and 1" ORB outlet connecting to REAR
TXQ	1	576-00865-71	CCW Pump Single In Single Out with 1.25" ORB inlet and 1.25" ORB outlet connecting to REAR
TQX	1	576-00865-71	CCW Pump Single In Single Out with 1.25" ORB inlet and 1.25" ORB outlet connecting to FRONT
VXL	1	576-00865-73	CCW Pump Single In Single Out with 1.5" ORB inlet and 0.5" ORB outlet connecting to REAR
VLX	1	576-00865-73	CCW Pump Single In Single Out with 1.5" ORB inlet and 0.5" ORB outlet connecting to FRONT
VMX	1	576-00865-75	CCW Pump Single In Single Out with 1.5" ORB inlet and 0.75" ORB outlet connecting to FRONT
VXM	1	576-00865-75	CCW Pump Single In Single Out with 1.5" ORB inlet and 0.75" ORB outlet connecting to REAR
VNX	1	576-00865-77	CCW Pump Single In Single Out with 1.5" ORB inlet and 1" ORB outlet connecting to FRONT
VXN	1	576-00865-77	CCW Pump Single In Single Out with 1.5" ORB inlet and 1" ORB outlet connecting to REAR

Bearing Carrier Codes

ORB

Code QTY Part Number Description

VXQ	1	576-00865-79	CCW Pump Single In Single Out with 1.5" ORB inlet and 1.25" ORB outlet connecting to REAR
VQX	1	576-00865-79	CCW Pump Single In Single Out with 1.5" ORB inlet and 1.25" ORB outlet connecting to FRONT
VXR	1	576-00865-81	CCW Pump Single In Single Out with 1.5" ORB inlet and 1.5" ORB outlet connecting to FRONT
VRX	1	576-00865-81	CCW Pump Single In Single Out with 1.5" ORB inlet and 1.5" ORB outlet connecting to FRONT
QLX	1	576-00865-59	CW Pump Single In Single Out with 1" ORB inlet and 0.5" ORB outlet connecting to FRONT
QXL	1	576-00865-59	CW Pump Single In Single Out with 1" ORB inlet and 0.5" ORB outlet connecting to REAR
QMX	1	576-00865-61	CW Pump Single In Single Out with 1" ORB inlet and 0.75" ORB outlet connecting to FRONT
QXM	1	576-00865-61	CW Pump Single In Single Out with 1" ORB inlet and 0.75" ORB outlet connecting to REAR
QXN	1	576-00865-63	CW Pump Single In Single Out with 1" ORB inlet and 1" ORB outlet connecting to REAR
QNX	1	576-00865-63	CW Pump Single In Single Out with 1" ORB inlet and 1" ORB outlet connecting to FRONT
SLX	1	576-00865-65	CW Pump Single In Single Out with 1.25" ORB inlet and 0.5" ORB outlet connecting to FRONT
SXL	1	576-00865-65	CW Pump Single In Single Out with 1.25" ORB inlet and 0.5" ORB outlet connecting to REAR
SXM	1	576-00865-67	CW Pump Single In Single Out with 1.25" ORB inlet and 0.75" ORB outlet connecting to REAR
SMX	1	576-00865-67	CW Pump Single In Single Out with 1.25" ORB inlet and 0.75" ORB outlet connecting to FRONT
SXN	1	576-00865-69	CW Pump Single In Single Out with 1.25" ORB inlet and 1" ORB outlet connecting to REAR
SNX	1	576-00865-69	CW Pump Single In Single Out with 1.25" ORB inlet and 1" ORB outlet connecting to FRONT
SXQ	1	576-00865-71	CW Pump Single In Single Out with 1.25" ORB inlet and 1.25" ORB outlet connecting to REAR
SQX	1	576-00865-71	CW Pump Single In Single Out with 1.25" ORB inlet and 1.25" ORB outlet connecting to FRONT
UXL	1	576-00865-73	CW Pump Single In Single Out with 1.5" ORB inlet and 0.5" ORB outlet connecting to REAR
ULX	1	576-00865-73	CW Pump Single In Single Out with 1.5" ORB inlet and 0.5" ORB outlet connecting to FRONT
UMX	1	576-00865-75	CW Pump Single In Single Out with 1.5" ORB inlet and 0.75" ORB outlet connecting to FRONT
UXM	1	576-00865-75	CW Pump Single In Single Out with 1.5" ORB inlet and 0.75" ORB outlet connecting to REAR
UNX	1	576-00865-77	CW Pump Single In Single Out with 1.5" ORB inlet and 1" ORB outlet connecting to FRONT
UXN	1	576-00865-77	CW Pump Single In Single Out with 1.5" ORB inlet and 1" ORB outlet connecting to REAR
UXQ	1	576-00865-79	CW Pump Single In Single Out with 1.5" ORB inlet and 1.25" ORB outlet connecting to REAR
UQX	1	576-00865-79	CW Pump Single In Single Out with 1.5" ORB inlet and 1.25" ORB outlet connecting to FRONT
URX	1	576-00865-81	CW Pump Single In Single Out with 1.5" ORB inlet and 1.5" ORB outlet connecting to FRONT
UXR	1	576-00865-81	CW Pump Single In Single Out with 1.5" ORB inlet and 1.5" ORB outlet connecting to REAR

Bearing Carrier Codes

SF

Code QTY Part Number Description

BMA	1	576-00865-2	CCW Pump Combined Outlet with 1" SF inlet and 0.75" SF outlet connecting to THRU
BMB	1	576-00865-4	CCW Pump Combined Outlet with 1" SF inlet and 1" SF outlet connecting to THRU
DMA	1	576-00865-6	CCW Pump Combined Outlet with 1.25" SF inlet and 0.75" SF outlet connecting to THRU
DMB	1	576-00865-8	CCW Pump Combined Outlet with 1.25" SF inlet and 1" SF outlet connecting to THRU
DMC	1	576-00865-10	CCW Pump Combined Outlet with 1.25" SF inlet and 1.25" SF outlet connecting to THRU
FMA	1	576-00865-12	CCW Pump Combined Outlet with 1.5" SF inlet and 0.75" SF outlet connecting to THRU
FMB	1	576-00865-14	CCW Pump Combined Outlet with 1.5" SF inlet and 1" SF outlet connecting to THRU
FMC	1	576-00865-16	CCW Pump Combined Outlet with 1.5" SF inlet and 1.25" SF outlet connecting to THRU
FMD	1	576-00865-18	CCW Pump Combined Outlet with 1.5" SF inlet and 1.5" SF outlet connecting to THRU
HMA	1	576-00865-20	CCW Pump Combined Outlet with 2" SF inlet and 0.75" SF outlet connecting to THRU
HMB	1	576-00865-22	CCW Pump Combined Outlet with 2" SF inlet and 1" SF outlet connecting to THRU
HMC	1	576-00865-24	CCW Pump Combined Outlet with 2" SF inlet and 1.25" SF outlet connecting to THRU
HMD	1	576-00865-26	CCW Pump Combined Outlet with 2" SF inlet and 1.5" SF outlet connecting to THRU
HME	1	576-00865-28	CCW Pump Combined Outlet with 2" SF inlet and 2" SF outlet connecting to THRU
AMA	1	576-00865-2	CW Pump Combined Outlet with 1" SF inlet and 0.75" SF outlet connecting to THRU
AMB	1	576-00865-4	CW Pump Combined Outlet with 1" SF inlet and 1" SF outlet connecting to THRU
CMA	1	576-00865-6	CW Pump Combined Outlet with 1.25" SF inlet and 0.75" SF outlet connecting to THRU
CMB	1	576-00865-8	CW Pump Combined Outlet with 1.25" SF inlet and 1" SF outlet connecting to THRU
CMC	1	576-00865-10	CW Pump Combined Outlet with 1.25" SF inlet and 1.25" SF outlet connecting to THRU
EMA	1	576-00865-12	CW Pump Combined Outlet with 1.5" SF inlet and 0.75" SF outlet connecting to THRU
EMB	1	576-00865-14	CW Pump Combined Outlet with 1.5" SF inlet and 1" SF outlet connecting to THRU
EMC	1	576-00865-16	CW Pump Combined Outlet with 1.5" SF inlet and 1.25" SF outlet connecting to THRU
EMD	1	576-00865-18	CW Pump Combined Outlet with 1.5" SF inlet and 1.5" SF outlet connecting to THRU
GMA	1	576-00865-20	CW Pump Combined Outlet with 2" SF inlet and 0.75" SF outlet connecting to THRU
GMB	1	576-00865-22	CW Pump Combined Outlet with 2" SF inlet and 1" SF outlet connecting to THRU
GMC	1	576-00865-24	CW Pump Combined Outlet with 2" SF inlet and 1.25" SF outlet connecting to THRU
GMD	1	576-00865-26	CW Pump Combined Outlet with 2" SF inlet and 1.5" SF outlet connecting to THRU
GME	1	576-00865-28	CW Pump Combined Outlet with 2" SF inlet and 2" SF outlet connecting to THRU
BCA	1	576-00375-2-31	CCW Pump Dual Outlet with 1" SF inlet and 0.75" SF top outlet connecting to FRONT Plus 1.25" SF bottom outlet connecting to REAR
BBA	1	576-00375-2-21	CCW Pump Dual Outlet with 1" SF inlet and 0.75" SF top outlet connecting to FRONT Plus 1" SF bottom outlet connecting to REAR
BAA	1	576-00375-2-11	CCW Pump Dual Outlet with 1" SF inlet and 0.75" SF top outlet connecting to FRONT Plus 0.75" SF bottom outlet connecting to REAR
BCB	1	576-00375-2-32	CCW Pump Dual Outlet with 1" SF inlet and 1" SF top outlet connecting to FRONT Plus 1.25" SF bottom outlet connecting to REAR
BAB	1	576-00375-2-12	CCW Pump Dual Outlet with 1" SF inlet and 1" SF top outlet connecting to FRONT Plus 0.75" SF bottom outlet connecting to REAR
BBB	1	576-00375-2-22	CCW Pump Dual Outlet with 1" SF inlet and 1" SF top outlet connecting to FRONT Plus 1" SF bottom outlet connecting to REAR

Bearing Carrier Codes

SF

Code QTY Part Number Description

BCC	1	576-00375-2-33	CCW Pump Dual Outlet with 1" SF inlet and 1.25" SF top outlet connecting to FRONT Plus 1.25" SF bottom outlet connecting to REAR
BAC	1	576-00375-2-13	CCW Pump Dual Outlet with 1" SF inlet and 1.25" SF top outlet connecting to FRONT Plus 0.75" SF bottom outlet connecting to REAR
BBC	1	576-00375-2-23	CCW Pump Dual Outlet with 1" SF inlet and 1.25" SF top outlet connecting to FRONT Plus 1" SF bottom outlet connecting to REAR
DAA	1	576-00375-4-11	CCW Pump Dual Outlet with 1.25" SF inlet and 0.75" SF top outlet connecting to FRONT Plus 0.75" SF bottom outlet connecting to REAR
DBA	1	576-00375-4-21	CCW Pump Dual Outlet with 1.25" SF inlet and 0.75" SF top outlet connecting to FRONT Plus 1" SF bottom outlet connecting to REAR
DCA	1	576-00375-4-31	CCW Pump Dual Outlet with 1.25" SF inlet and 0.75" SF top outlet connecting to FRONT Plus 1.25" SF bottom outlet connecting to REAR
DAB	1	576-00375-4-12	CCW Pump Dual Outlet with 1.25" SF inlet and 1" SF top outlet connecting to FRONT Plus 0.75" SF bottom outlet connecting to REAR
DBB	1	576-00375-4-22	CCW Pump Dual Outlet with 1.25" SF inlet and 1" SF top outlet connecting to FRONT Plus 1" SF bottom outlet connecting to REAR
DCB	1	576-00375-4-32	CCW Pump Dual Outlet with 1.25" SF inlet and 1" SF top outlet connecting to FRONT Plus 1.25" SF bottom outlet connecting to REAR
DAC	1	576-00375-4-13	CCW Pump Dual Outlet with 1.25" SF inlet and 1.25" SF top outlet connecting to FRONT Plus 0.75" SF bottom outlet connecting to REAR
DCC	1	576-00375-4-33	CCW Pump Dual Outlet with 1.25" SF inlet and 1.25" SF top outlet connecting to FRONT Plus 1.25" SF bottom outlet connecting to REAR
DBC	1	576-00375-4-23	CCW Pump Dual Outlet with 1.25" SF inlet and 1.25" SF top outlet connecting to FRONT Plus 1" SF bottom outlet connecting to REAR
FAA	1	576-00375-6-11	CCW Pump Dual Outlet with 1.5" SF inlet and 0.75" SF top outlet connecting to FRONT Plus 0.75" SF bottom outlet connecting to REAR
FBA	1	576-00375-6-21	CCW Pump Dual Outlet with 1.5" SF inlet and 0.75" SF top outlet connecting to FRONT Plus 1" SF bottom outlet connecting to REAR
FCA	1	576-00375-6-31	CCW Pump Dual Outlet with 1.5" SF inlet and 0.75" SF top outlet connecting to FRONT Plus 1.25" SF bottom outlet connecting to REAR
FAB	1	576-00375-6-12	CCW Pump Dual Outlet with 1.5" SF inlet and 1" SF top outlet connecting to FRONT Plus 0.75" SF bottom outlet connecting to REAR
FBB	1	576-00375-6-22	CCW Pump Dual Outlet with 1.5" SF inlet and 1" SF top outlet connecting to FRONT Plus 1" SF bottom outlet connecting to REAR
FCB	1	576-00375-6-32	CCW Pump Dual Outlet with 1.5" SF inlet and 1" SF top outlet connecting to FRONT Plus 1.25" SF bottom outlet connecting to REAR
FCC	1	576-00375-6-33	CCW Pump Dual Outlet with 1.5" SF inlet and 1.25" SF top outlet connecting to FRONT Plus 1.25" SF bottom outlet connecting to REAR
FBC	1	576-00375-6-23	CCW Pump Dual Outlet with 1.5" SF inlet and 1.25" SF top outlet connecting to FRONT Plus 1" SF bottom outlet connecting to REAR
FAC	1	576-00375-6-13	CCW Pump Dual Outlet with 1.5" SF inlet and 1.25" SF top outlet connecting to FRONT Plus 0.75" SF bottom outlet connecting to REAR
HCA	1	576-00375-8-31	CCW Pump Dual Outlet with 2" SF inlet and 0.75" SF top outlet connecting to FRONT Plus 1.25" SF bottom outlet connecting to REAR
HAA	1	576-00375-8-11	CCW Pump Dual Outlet with 2" SF inlet and 0.75" SF top outlet connecting to FRONT Plus 0.75" SF bottom outlet connecting to REAR
HBA	1	576-00375-8-21	CCW Pump Dual Outlet with 2" SF inlet and 0.75" SF top outlet connecting to FRONT Plus 1" SF bottom outlet connecting to REAR
HCB	1	576-00375-8-32	CCW Pump Dual Outlet with 2" SF inlet and 1" SF top outlet connecting to FRONT Plus 1.25" SF bottom outlet connecting to REAR
HBB	1	576-00375-8-22	CCW Pump Dual Outlet with 2" SF inlet and 1" SF top outlet connecting to FRONT Plus 1" SF bottom outlet connecting to REAR

Bearing Carrier Codes

SF

Code QTY Part Number Description

HAB	1	576-00375-8-12	CCW Pump Dual Outlet with 2" SF inlet and 1" SF top outlet connecting to FRONT Plus 0.75" SF bottom outlet connecting to REAR
HBC	1	576-00375-8-23	CCW Pump Dual Outlet with 2" SF inlet and 1.25" SF top outlet connecting to FRONT Plus 1" SF bottom outlet connecting to REAR
HAC	1	576-00375-8-13	CCW Pump Dual Outlet with 2" SF inlet and 1.25" SF top outlet connecting to FRONT Plus 0.75" SF bottom outlet connecting to REAR
HCC	1	576-00375-8-33	CCW Pump Dual Outlet with 2" SF inlet and 1.25" SF top outlet connecting to FRONT Plus 1.25" SF bottom outlet connecting to REAR
ACA	1	576-00375-1-31	CW Pump Dual Outlet with 1" SF inlet and 0.75" SF top outlet connecting to FRONT Plus 1.25" SF bottom outlet connecting to REAR
ABA	1	576-00375-1-21	CW Pump Dual Outlet with 1" SF inlet and 0.75" SF top outlet connecting to FRONT Plus 1" SF bottom outlet connecting to REAR
AAA	1	576-00375-1-11	CW Pump Dual Outlet with 1" SF inlet and 0.75" SF top outlet connecting to FRONT Plus 0.75" SF bottom outlet connecting to REAR
AAB	1	576-00375-1-12	CW Pump Dual Outlet with 1" SF inlet and 1" SF top outlet connecting to FRONT Plus 0.75" SF bottom outlet connecting to REAR
ACB	1	576-00375-1-32	CW Pump Dual Outlet with 1" SF inlet and 1" SF top outlet connecting to FRONT Plus 1.25" SF bottom outlet connecting to REAR
ABB	1	576-00375-1-22	CW Pump Dual Outlet with 1" SF inlet and 1" SF top outlet connecting to FRONT Plus 1" SF bottom outlet connecting to REAR
ABC	1	576-00375-1-23	CW Pump Dual Outlet with 1" SF inlet and 1.25" SF top outlet connecting to FRONT Plus 1" SF bottom outlet connecting to REAR
ACC	1	576-00375-1-33	CW Pump Dual Outlet with 1" SF inlet and 1.25" SF top outlet connecting to FRONT Plus 1.25" SF bottom outlet connecting to REAR
AAC	1	576-00375-1-13	CW Pump Dual Outlet with 1" SF inlet and 1.25" SF top outlet connecting to FRONT Plus 0.75" SF bottom outlet connecting to REAR
CAA	1	576-00375-3-11	CW Pump Dual Outlet with 1.25" SF inlet and 0.75" SF top outlet connecting to FRONT Plus 0.75" SF bottom outlet connecting to REAR
CBA	1	576-00375-3-21	CW Pump Dual Outlet with 1.25" SF inlet and 0.75" SF top outlet connecting to FRONT Plus 1" SF bottom outlet connecting to REAR
CCA	1	576-00375-3-31	CW Pump Dual Outlet with 1.25" SF inlet and 0.75" SF top outlet connecting to FRONT Plus 1.25" SF bottom outlet connecting to REAR
CBB	1	576-00375-3-22	CW Pump Dual Outlet with 1.25" SF inlet and 1" SF top outlet connecting to FRONT Plus 1" SF bottom outlet connecting to REAR
CCB	1	576-00375-3-32	CW Pump Dual Outlet with 1.25" SF inlet and 1" SF top outlet connecting to FRONT Plus 1.25" SF bottom outlet connecting to REAR
CAB	1	576-00375-3-12	CW Pump Dual Outlet with 1.25" SF inlet and 1" SF top outlet connecting to FRONT Plus 0.75" SF bottom outlet connecting to REAR
CCC	1	576-00375-3-33	CW Pump Dual Outlet with 1.25" SF inlet and 1.25" SF top outlet connecting to FRONT Plus 1.25" SF bottom outlet connecting to REAR
CAC	1	576-00375-3-13	CW Pump Dual Outlet with 1.25" SF inlet and 1.25" SF top outlet connecting to FRONT Plus 0.75" SF bottom outlet connecting to REAR
CBC	1	576-00375-3-23	CW Pump Dual Outlet with 1.25" SF inlet and 1.25" SF top outlet connecting to FRONT Plus 1" SF bottom outlet connecting to REAR
ECA	1	576-00375-5-31	CW Pump Dual Outlet with 1.5" SF inlet and 0.75" SF top outlet connecting to FRONT Plus 1.25" SF bottom outlet connecting to REAR
EBA	1	576-00375-5-21	CW Pump Dual Outlet with 1.5" SF inlet and 0.75" SF top outlet connecting to FRONT Plus 1" SF bottom outlet connecting to REAR
EAA	1	576-00375-5-11	CW Pump Dual Outlet with 1.5" SF inlet and 0.75" SF top outlet connecting to FRONT Plus 0.75" SF bottom outlet connecting to REAR
ECB	1	576-00375-5-32	CW Pump Dual Outlet with 1.5" SF inlet and 1" SF top outlet connecting to FRONT Plus 1.25" SF bottom outlet connecting to REAR

Code QTY Part Number Description

EBB	1	576-00375-5-22	CW Pump Dual Outlet with 1.5" SF inlet and 1" SF top outlet connecting to FRONT Plus 1" SF bottom outlet connecting to REAR
EAB	1	576-00375-5-12	CW Pump Dual Outlet with 1.5" SF inlet and 1" SF top outlet connecting to FRONT Plus 0.75" SF bottom outlet connecting to REAR
EAC	1	576-00375-5-13	CW Pump Dual Outlet with 1.5" SF inlet and 1.25" SF top outlet connecting to FRONT Plus 0.75" SF bottom outlet connecting to REAR
EBC	1	576-00375-5-23	CW Pump Dual Outlet with 1.5" SF inlet and 1.25" SF top outlet connecting to FRONT Plus 1" SF bottom outlet connecting to REAR
ECC	1	576-00375-5-33	CW Pump Dual Outlet with 1.5" SF inlet and 1.25" SF top outlet connecting to FRONT Plus 1.25" SF bottom outlet connecting to REAR
GAA	1	576-00375-7-11	CW Pump Dual Outlet with 2" SF inlet and 0.75" SF top outlet connecting to FRONT Plus 0.75" SF bottom outlet connecting to REAR
GCA	1	576-00375-7-31	CW Pump Dual Outlet with 2" SF inlet and 0.75" SF top outlet connecting to FRONT Plus 1.25" SF bottom outlet connecting to REAR
GBA	1	576-00375-7-21	CW Pump Dual Outlet with 2" SF inlet and 0.75" SF top outlet connecting to FRONT Plus 1" SF bottom outlet connecting to REAR
GAB	1	576-00375-7-12	CW Pump Dual Outlet with 2" SF inlet and 1" SF top outlet connecting to FRONT Plus 0.75" SF bottom outlet connecting to REAR
GCB	1	576-00375-7-32	CW Pump Dual Outlet with 2" SF inlet and 1" SF top outlet connecting to FRONT Plus 1.25" SF bottom outlet connecting to REAR
GBB	1	576-00375-7-22	CW Pump Dual Outlet with 2" SF inlet and 1" SF top outlet connecting to FRONT Plus 1" SF bottom outlet connecting to REAR
GAC	1	576-00375-7-13	CW Pump Dual Outlet with 2" SF inlet and 1.25" SF top outlet connecting to FRONT Plus 0.75" SF bottom outlet connecting to REAR
GCC	1	576-00375-7-33	CW Pump Dual Outlet with 2" SF inlet and 1.25" SF top outlet connecting to FRONT Plus 1.25" SF bottom outlet connecting to REAR
GBC	1	576-00375-7-23	CW Pump Dual Outlet with 2" SF inlet and 1.25" SF top outlet connecting to FRONT Plus 1" SF bottom outlet connecting to REAR
BXA	1	576-00865-1	CCW Pump Single In Single Out with 1" SF inlet and 0.75" SF outlet connecting to REAR
BAX	1	576-00865-1	CCW Pump Single In Single Out with 1" SF inlet and 0.75" SF outlet connecting to FRONT
BXB	1	576-00865-3	CCW Pump Single In Single Out with 1" SF inlet and 1" SF outlet connecting to REAR
BBX	1	576-00865-3	CCW Pump Single In Single Out with 1" SF inlet and 1" SF outlet connecting to FRONT
DAX	1	576-00865-5	CCW Pump Single In Single Out with 1.25" SF inlet and 0.75" SF outlet connecting to FRONT
DXA	1	576-00865-5	CCW Pump Single In Single Out with 1.25" SF inlet and 0.75" SF outlet connecting to REAR
DBX	1	576-00865-7	CCW Pump Single In Single Out with 1.25" SF inlet and 1" SF outlet connecting to FRONT
DXB	1	576-00865-7	CCW Pump Single In Single Out with 1.25" SF inlet and 1" SF outlet connecting to REAR
DXC	1	576-00865-9	CCW Pump Single In Single Out with 1.25" SF inlet and 1.25" SF outlet connecting to REAR
DCX	1	576-00865-9	CCW Pump Single In Single Out with 1.25" SF inlet and 1.25" SF outlet connecting to FRONT
FXA	1	576-00865-11	CCW Pump Single In Single Out with 1.5" SF inlet and 0.75" SF outlet connecting to REAR
FAX	1	576-00865-11	CCW Pump Single In Single Out with 1.5" SF inlet and 0.75" SF outlet connecting to FRONT
FBX	1	576-00865-13	CCW Pump Single In Single Out with 1.5" SF inlet and 1" SF outlet connecting to FRONT
FXB	1	576-00865-13	CCW Pump Single In Single Out with 1.5" SF inlet and 1" SF outlet connecting to REAR
FXC	1	576-00865-15	CCW Pump Single In Single Out with 1.5" SF inlet and 1.25" SF outlet connecting to REAR
FCX	1	576-00865-15	CCW Pump Single In Single Out with 1.5" SF inlet and 1.25" SF outlet connecting to FRONT
FXD	1	576-00865-17	CCW Pump Single In Single Out with 1.5" SF inlet and 1.5" SF outlet connecting to REAR

Code QTY Part Number Description

Code	QTY	Part Number	Description
FDX	1	576-00865-17	CCW Pump Single In Single Out with 1.5" SF inlet and 1.5" SF outlet connecting to FRONT
HAX	1	576-00865-19	CCW Pump Single In Single Out with 2" SF inlet and 0.75" SF outlet connecting to FRONT
HXA	1	576-00865-19	CCW Pump Single In Single Out with 2" SF inlet and 0.75" SF outlet connecting to REAR
HBX	1	576-00865-21	CCW Pump Single In Single Out with 2" SF inlet and 1" SF outlet connecting to FRONT
HXB	1	576-00865-21	CCW Pump Single In Single Out with 2" SF inlet and 1" SF outlet connecting to REAR
HCX	1	576-00865-23	CCW Pump Single In Single Out with 2" SF inlet and 1.25" SF outlet connecting to FRONT
HXC	1	576-00865-23	CCW Pump Single In Single Out with 2" SF inlet and 1.25" SF outlet connecting to REAR
HDX	1	576-00865-25	CCW Pump Single In Single Out with 2" SF inlet and 1.5" SF outlet connecting to FRONT
HXD	1	576-00865-25	CCW Pump Single In Single Out with 2" SF inlet and 1.5" SF outlet connecting to REAR
HEX	1	576-00865-27	CCW Pump Single In Single Out with 2" SF inlet and 2" SF outlet connecting to FRONT
HXE	1	576-00865-27	CCW Pump Single In Single Out with 2" SF inlet and 2" SF outlet connecting to REAR
AXA	1	576-00865-1	CW Pump Single In Single Out with 1" SF inlet and 0.75" SF outlet connecting to REAR
AAX	1	576-00865-1	CW Pump Single In Single Out with 1" SF inlet and 0.75" SF outlet connecting to FRONT
ABX	1	576-00865-3	CW Pump Single In Single Out with 1" SF inlet and 1" SF outlet connecting to FRONT
AXB	1	576-00865-3	CW Pump Single In Single Out with 1" SF inlet and 1" SF outlet connecting to REAR
CAX	1	576-00865-5	CW Pump Single In Single Out with 1.25" SF inlet and 0.75" SF outlet connecting to FRONT
CXA	1	576-00865-5	CW Pump Single In Single Out with 1.25" SF inlet and 0.75" SF outlet connecting to REAR
CXB	1	576-00865-7	CW Pump Single In Single Out with 1.25" SF inlet and 1" SF outlet connecting to REAR
CBX	1	576-00865-7	CW Pump Single In Single Out with 1.25" SF inlet and 1" SF outlet connecting to FRONT
CCX	1	576-00865-9	CW Pump Single In Single Out with 1.25" SF inlet and 1.25" SF outlet connecting to FRONT
CXC	1	576-00865-9	CW Pump Single In Single Out with 1.25" SF inlet and 1.25" SF outlet connecting to REAR
EAX	1	576-00865-11	CW Pump Single In Single Out with 1.5" SF inlet and 0.75" SF outlet connecting to FRONT
EXA	1	576-00865-11	CW Pump Single In Single Out with 1.5" SF inlet and 0.75" SF outlet connecting to REAR
EXB	1	576-00865-13	CW Pump Single In Single Out with 1.5" SF inlet and 1" SF outlet connecting to REAR
EBX	1	576-00865-13	CW Pump Single In Single Out with 1.5" SF inlet and 1" SF outlet connecting to FRONT
EXC	1	576-00865-15	CW Pump Single In Single Out with 1.5" SF inlet and 1.25" SF outlet connecting to REAR
ECX	1	576-00865-15	CW Pump Single In Single Out with 1.5" SF inlet and 1.25" SF outlet connecting to FRONT
EXD	1	576-00865-17	CW Pump Single In Single Out with 1.5" SF inlet and 1.5" SF outlet connecting to REAR
EDX	1	576-00865-17	CW Pump Single In Single Out with 1.5" SF inlet and 1.5" SF outlet connecting to FRONT
GXA	1	576-00865-19	CW Pump Single In Single Out with 2" SF inlet and 0.75" SF outlet connecting to REAR
GAX	1	576-00865-19	CW Pump Single In Single Out with 2" SF inlet and 0.75" SF outlet connecting to FRONT
GBX	1	576-00865-21	CW Pump Single In Single Out with 2" SF inlet and 1" SF outlet connecting to FRONT
GXB	1	576-00865-21	CW Pump Single In Single Out with 2" SF inlet and 1" SF outlet connecting to REAR
GXC	1	576-00865-23	CW Pump Single In Single Out with 2" SF inlet and 1.25" SF outlet connecting to REAR
GCX	1	576-00865-23	CW Pump Single In Single Out with 2" SF inlet and 1.25" SF outlet connecting to FRONT
GDX	1	576-00865-25	CW Pump Single In Single Out with 2" SF inlet and 1.5" SF outlet connecting to FRONT
GXD	1	576-00865-25	CW Pump Single In Single Out with 2" SF inlet and 1.5" SF outlet connecting to REAR

Bearing Carrier Codes

SF

Code QTY Part Number Description

GXE	1	576-00865-27	CW Pump Single In Single Out with 2" SF inlet and 2" SF outlet connecting to REAR
-----	---	--------------	---

GEX	1	576-00865-27	CW Pump Single In Single Out with 2" SF inlet and 2" SF outlet connecting to FRONT
-----	---	--------------	--

Bearing Carrier Small Parts

Code	QTY	Part Number	Description
	4	921-00427-P	197 HIGH PRESSURE BUSHING