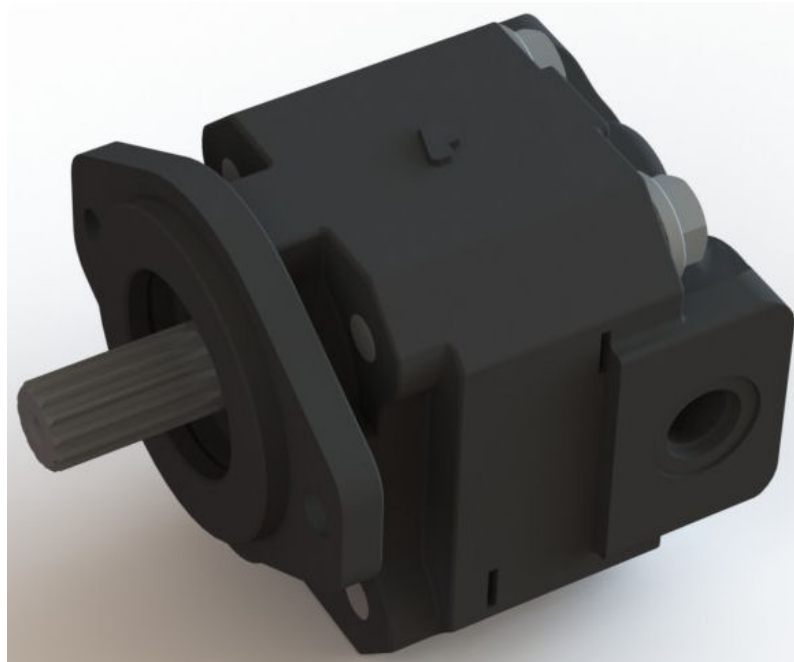


Permco



124 Series Code Book

Disclaimer

THROUGH THE USE OF THIS CATALOG ALL THE COMPONENT PARTS OF ANY PERMCO PUMP OR MOTOR CAN BE DETERMINED EXCLUDING FASTENERS.

THIS CODE BOOK IS FOR THE 124 SERIES PUMPS AND MOTORS.

EACH MODEL SERIES IS DIVIDED IN THE FOLLOWING MANNER:

- I. SHAFT END COVERS FOLLOWED BY SHAFT END COVER SMALL PARTS.
- II. PORT END COVERS FOLLOWED BY PORT END COVER SMALL PARTS.
- III. GEAR HOUSINGS FOLLOWED BY:
 - A. GEAR HOUSING SMALL PARTS.
 - B. GEARS.
- IV. DRIVE SHAFTS OR GEAR/SHAFTS FOLLOWED BY DRIVE SHAFT SMALL PARTS.
- V. BEARING CARRIERS FOLLOWED BY BEARING CARRIER SMALL PARTS.
- VI. CONNECTING SHAFTS.

COPYRIGHT © MAY 2002 BY PERMCO, INC. ALL RIGHTS RESERVED. NO PART OF THIS BOOK MAY BE REPRODUCED, STORED IN A RETRIEVAL SYSTEM, OR TRANSMITTED IN ANY FORM OR BY ANY MEANS ELECTRONIC, MECHANICAL, PHOTOCOPYING, RECORDING, OR OTHERWISE WITHOUT PRIOR WRITTEN PERMISSION OF PERMCO, INC.

How To

BELOW IS AN EXAMPLE OF HOW TO USE THIS CATALOG:

SINGLE ASSEMBLY CODE: P124A082AEZA2-54
TANDEM ASSEMBLY CODE: P124B082AHZA20-54ZFZA12-1

P DENOTES PUMP (M DENOTES MOTOR)
124 SERIES
A B OR L MODEL TYPE (A-SINGLE B-TANDEM L-EXTENDED STUDS)
082 SHAFT END COVER
AE PORT END COVER (SINGLE)
AH PORT END COVER (MULTIPLE)
ZA20 GEAR HOUSING (FIRST)
14 DRIVE SHAFT

IF BEARING CARRIER
ZA12 GEAR HOUSING (SECOND)
1 CONNECTING SHAFT

THE ROTATION OF ANY UNIT IS IDENTIFIED BY THE FIRST DIGIT OF THE SHAFT END COVER CODE (SEE INDIVIDUAL SERIES COVER PAGES). THE GEAR SIZE IS DENOTED BY THE TWO (2) DIGITS IN THE GEAR HOUSING CODE.

| | | | | | | | |
|-----------------|-----|-----|----|-------|-------|-------|----|
| CODE. : | 05 | 07 | 10 | 12 | 15 | 17 | 20 |
| SIZE IN INCHES: | 1/2 | 3/4 | 1 | 1-1/4 | 1-1/2 | 1-3/4 | 2 |

ROTATION IS VIEWED LOOKING AT SHAFT END (SHAFT ON TOP.)
AN ASTERISK (*) DENOTES EITHER OBSOLETE OR SPECIAL. PLEASE CONSULT FACTORY AS THEY MAY BE REPLACED BY OTHER STANDARD ITEMS.

Abbreviations

Shaft End Cover Description

| | |
|-----------|---------------------------------------------|
| FT MT | FOOT MOUNT |
| G F TOP | GREASE FITTING ON TOP (OTHERS ON BOTTOM) |
| PAD MT | PAD MOUNT |
| PB | PIGGYBACK PUMP |
| PD | PILOT DIAMETER |
| PX | PILOT EXTENSION |
| RD FLG | ROUND FLANGE |
| W/MTG SLT | WITH MOUNTING SLOT |
| WD | WITH DRAIN |
| WD2 | WITH DRAIN AT 2 OCLOCK POSITION |
| WD8 | WITH DRAIN AT 8 OCLOCK POSITION |
| WD12 | WITH DRAIN AT 12 OCLOCK POSITION |
| W2D | WITH 2 DRAINS |

Port End Cover Description

| | |
|-----|------------------------|
| OS | PORTS ARE OUT THE SIDE |
| PB | PIGGYBACK PUMP |
| XSD | EXTENDED STUDS |

Shaft Description

| | |
|-----------|-------------------|
| T | TOOTH |
| PB | PIGGYBACK PUMP |
| W/THD END | WITH THREADED END |

Porting Descriptions

| | |
|-----|---------------------------------------------------------------|
| NPT | NATIONAL PIPE THREAD |
| ORB | STRAIGHT THREAD. PORT SIZE REFERS TO O.D. OF TUBE. |
| SF | SPLIT FLANGE PORTS. PORT SIZE REFERS TO FLANGE HOLE DIAMETER. |
| T | INTERNAL CONNECTIONS TO FRONT & BACK SECTION. |
| B | CONNECTION TO BACK SECTION. |
| F | CONNECTION TO FRONT SECTION. |

Identification

STUD HOLES - 4 AT 9/16 DIAMETER

STUD DIA. - 1/2 IN.

ONE-PIECE DRIVE SHAFT AND GEAR (INTEGRAL)

HOUSING HEIGHT - 4.75 INCHES

HOUSING WIDTH - GEAR SIZE + 0.4 INCH

BOLT TORQUE (SINGLE UNIT) 120 FT-LBS

BOLT TORQUE (MULTIPLE UNIT) 115-120 FT-LBS

Gear Widths available

| | | | | | | | | | | | |
|-----------|-----|-----|-----|-----|----|-------|-------|-------|-------|-------|----------|
| CODE 02 | 03 | 05 | 07 | 08 | 10 | 11 | 12 | 13 | 15 | 17 | 20 |
| SIZES 1/4 | 3/8 | 1/2 | 3/4 | 7/8 | 1 | 1-1/8 | 1-1/4 | 1-3/8 | 1-1/2 | 1-3/4 | 2 INCHES |

Shaft End Covers

THE TYPE OF SHAFT END COVER IS DETERMINED BY THE ENTIRE 3 DIGIT DESIGNATION.

TYPE II-WITHOUT OUTBOARD BEARING

THE FIRST DIGIT OF THE SHAFT END COVER CODE DESIGNATES PUMP/MOTOR ROTATION.

THE SHAFT END COVER TYPE AND DRIVE SHAFT TYPE MUST HAVE THE SAME NUMBER DESIGNATION

| ALL CODES BEGINNING WITH | CW | CCW | DBL | PUMP | MOTOR | TYPE |
|--------------------------|----|-----|-----|------|-------|------|
| 0 | XX | | | XX | | II |
| 1 | | XX | | XX | | II |
| 8 | | | XX | | XX | II |

Accessories

| Plastic Plugs | |
|----------------|-----------|
| Port Size | Part No. |
| NPT & BSPP | |
| 1/8" | #8 |
| 1/4" | #11 |
| 3/8" | #17 |
| 1/2" | #23 |
| 3/4" | #30 |
| 1" | #42 |
| 1-1/4" | #53 |
| 1-1/2" | #57 |
| 2" | #68 |
| 2-1/2" | #78 |
| SAE ORB | |
| 1/2" | #23 |
| 3/8" | #17 |
| 5/8" | #27 |
| 3/4" | #35 |
| 7/8" | #42 |
| 1" | #44 |
| 1-1/4" | #53 |
| 1-1/2" | #57 |
| SF & Metric SF | |
| 1/2" | #12 |
| 3/4" | B-831-213 |
| 1" | B-831-214 |
| 1-1/4" | B-831-215 |
| 1-1/2" | B-831-216 |
| 2" | B-831-217 |
| 2-1/2" | B-831-218 |

| Fasteners for Single Units | | | |
|----------------------------|----------|-------------|------|
| Gear Size | Part No. | Bolt Length | Qty. |
| 1/2" | W1-88 | 2-3/4" | 4 |
| 3/4" | W1-11 | 3" | 4 |
| 1" | W1-66 | 3-1/4" | 4 |
| 1-1/4" | W1-12 | 3-1/2" | 4 |
| 1-1/2" | W1-69 | 3-3/4" | 4 |
| 1-3/4" | W1-83 | 4" | 4 |
| 2" | W1-60 | 4-1/4" | 4 |
| Washer Part No. | | W033-2 | 4 |

| Shaft Protectors | |
|------------------|----------------------------|
| SP-1000-1 | .656"Dia |
| SP-1000-2 | .587"Dia |
| SP-1000-3 | 1"Dia |
| SP-1000-4 | 1-1/4" Splined & 1-1/8"Dia |
| SP-1000-5 | 1-1/4" Dia Keyed |
| SP-1000-6 | 1/2"Dia |
| SP-1000-7 | 5/8"Dia |
| SP-1000-8 | 3/4"Dia |
| SP-1000-8 | 7/8"Dia |

| Fasteners for Multi-Section Units | | |
|-------------------------------------------------------------------------|--------|----------|
| Add Total Gear Width to the length provided below to obtain stud length | | |
| | Flush | Extended |
| Dual Section | 6 | 7.5 |
| Triple Section | 9 | 10.5 |
| Quad Section | 12 | 13.5 |
| Washer Part No. | W033-1 | Qty of 4 |
| Nut Part No. | W3-40 | Qty of 4 |

| Available Stud Lengths | |
|------------------------|--------------|
| Stud Part No. | Description |
| ZE-0391-10 | 1/2-13 X 10" |
| ZE-0391-12 | 1/2-13 X 12" |
| ZE-0391-14 | 1/2-13 X 14" |
| ZE-0391-16 | 1/2-13 X 16" |
| ZE-0391-20 | 1/2-13 X 20" |
| ZE-0391-24 | 1/2-13 X 24" |
| ZE-0391-28 | 1/2-13 X 28" |

Shaft End cover Codes

| Code | QTY | Part Number | Description |
|------|-----|-------------|-----------------------------------------------------------------------------------------------|
| 022 | 1 | 574-01275 | CW 124 Pump Type II SEC with EURO MOUNT 4 Bolts NO Outboard Bearing |
| 078 | 1 | 574-01218 | CW 124 Pump Type II SEC with SAE "A" (3.25" Diameter) 2 Bolts NO Outboard Bearing |
| 082 | 1 | 574-01218 | CW 124 Pump Type II SEC with SAE "A" (3.25" Diameter) 2 Bolts NO Outboard Bearing |
| 084 | 1 | 574-01288 | CW 124 Pump Type II SEC with NO PILOT PAD MOUNT NO Outboard Bearing |
| 085 | 1 | 574-01118 | CW 124 Pump Type II SEC with SAE "B" (4" Diameter) 2 Bolts NO Outboard Bearing |
| 122 | 1 | 574-01275 | CCW 124 Pump Type II SEC with EURO MOUNT 4 Bolts NO Outboard Bearing |
| 178 | 1 | 574-01218 | CCW 124 Pump Type II SEC with SAE "A" (3.25" Diameter) 2 Bolts NO Outboard Bearing |
| 182 | 1 | 574-01218 | CCW 124 Pump Type II SEC with SAE "A" (3.25" Diameter) 2 Bolts NO Outboard Bearing |
| 184 | 1 | 574-01288 | CCW 124 Pump Type II SEC with NO PILOT PAD MOUNT NO Outboard Bearing |
| 185 | 1 | 574-01118 | CCW 124 Pump Type II SEC with SAE "B" (4" Diameter) 2 Bolts NO Outboard Bearing |
| 882 | 1 | 574-01235 | Bi-Rotation 124 Motor Type II SEC with SAE "A" (3.25" Diameter) 2 Bolts NO Outboard Bearing |
| 885 | 1 | 574-01191 | Bi-Rotation 124 Motor Type II SEC with SAE "B" (4" Diameter) 2 Bolts NO Outboard Bearing |

Shaft End cover Small Parts Codes

| Code | QTY | Part Number | Description |
|------|-----|---------------|----------------------------------|
| | 1 | 226-01121-V | VITON SHAFT SEAL |
| 022 | 1 | 226-01121 | 124 PUMP SEAL |
| 022 | 1 | 408-01277 | 124 SEC.PILOT SLEEVE 36.5MM DIA. |
| 022 | 2 | 921-01108 | 124 HIGH PRESSURE BUSHING |
| 078 | 1 | 226-01121 | 124 PUMP SEAL |
| 078 | 1 | 565-00407-ISR | 124 SNAP RING |
| 078 | 2 | 921-01108 | 124 HIGH PRESSURE BUSHING |
| 078 | 1 | 961-01193 | 124 SHAFT SEAL RETAINER |
| 082 | 1 | 226-01121 | 124 PUMP SEAL |
| 082 | 2 | 921-01108 | 124 HIGH PRESSURE BUSHING |
| 084 | 1 | 226-01121 | 124 PUMP SEAL |
| 084 | 1 | 565-01289 | 124 SNAP RING, PAD MT. CLUTCH |
| 084 | 2 | 921-01108 | 124 HIGH PRESSURE BUSHING |
| 085 | 1 | 226-01121 | 124 PUMP SEAL |
| 085 | 2 | 921-01108 | 124 HIGH PRESSURE BUSHING |
| 122 | 1 | 226-01121 | 124 PUMP SEAL |
| 122 | 1 | 408-01277 | 124 SEC.PILOT SLEEVE 36.5MM DIA. |
| 122 | 2 | 921-01108 | 124 HI PRESS BUSH |
| 178 | 1 | 226-01121 | 124 PUMP SEAL |
| 178 | 1 | 565-00407-ISR | 124 SNAP RING |
| 178 | 2 | 921-01108 | 124 HIGH PRESSURE BUSHING |
| 178 | 1 | 961-01193 | 124 SHAFT SEAL RETAINER |
| 182 | 1 | 226-01121 | 124 PUMP SEAL |
| 182 | 2 | 921-01108 | 124 HIGH PRESSURE BUSHING |
| 184 | 1 | 226-01121 | 124 PUMP SEAL |
| 184 | 1 | 565-01289 | 124 SNAP RING, PAD MT. CLUTCH |
| 184 | 2 | 921-01108 | 124 HIGH PRESSURE BUSHING |
| 185 | 1 | 226-01121 | 124 PUMP SEAL |
| 185 | 2 | 921-01108 | 124 HI PRESS BUSH |
| 882 | 1 | 249-01555 | 124 MOTOR SEAL |
| 882 | 1 | 565-00407-ISR | 124 SNAP RING |
| 882 | 1 | 565-01194 | 1/4" ORB PLUG |
| 882 | 2 | 921-01108 | 124 HIGH PRESSURE BUSHING |
| 882 | 1 | 961-01193 | 124 SEAL RETAINER |
| 882 | 2 | L-0280-K | CHECK VALVES |
| 885 | 1 | 249-01555 | 124 MOTOR SEAL |
| 885 | 1 | 565-00407-ISR | 124 SNAP RING |

Shaft End cover Small Parts Codes

| Code | QTY | Part Number | Description |
|------|-----|-------------|---------------------------|
| 885 | 1 | 565-01194 | 1/4" JIC PLUG |
| 885 | 2 | 921-01108 | 124 HIGH PRESSURE BUSHING |
| 885 | 1 | 961-01193 | 124 SEAL RETAINER |
| 885 | 2 | L-0280-K | CHECK VALVES |
| ALL | 2 | 921-01108 | 124 HIGH PRESSURE BUSHING |
| ALL | 4 | 921-01108 | 124 HIGH PRESSURE BUSHING |

For tell-tale applications a "D" must follow the P197__.
Shaft end cover must be noted to have machining done for tell-tale drain.
Extra small parts needed for tell-tale unit.

| QTY | Part Number | Description |
|-----|-------------|-----------------------------|
| 1 | MZ-0961-1 | SEAL RETAINER "TELL-TALE" |
| 1 | W62-26-18 | SEAL FOR "TELL-TALE" |
| 1 | W023-206 | SNAP RING |
| 1 | W0-19 | PIPE PLUG/SOC HD 1/8-27 NPT |
| 1 | K-2995-109 | RETAINER QUAD-RING |

Code QTY Part Number Description

| | | | |
|----|---|-----------|----------------------------------------------------------|
| AH | 1 | 592-01134 | Pump Bi-Rotation with BLANK Blank Inlet and Blank Outlet |
|----|---|-----------|----------------------------------------------------------|

Port End Cover Codes

NPT

Code QTY Part Number Description

| | | | |
|----|---|----------------|-------------------------------------------------------------------------------------------------|
| QY | 1 | 592-01195-1104 | Motor Bi-Rotation with NPT 0.5" Rear Port inlet and 0.5" Rear Port outlet |
| QX | 1 | 592-01195-1116 | Motor Bi-Rotation with NPT 0.75" Rear Port inlet and 0.75" Rear Port outlet |
| QW | 1 | 592-01195-1127 | Motor Bi-Rotation with NPT 1" Rear Port inlet and 1" Rear Port outlet |
| CP | 1 | 592-01195-2104 | Motor Bi-Rotation with NPT 0.5" Side Port inlet and 0.5" Side Port outlet |
| CM | 1 | 592-01195-2116 | Motor Bi-Rotation with NPT 0.75" Side Port inlet and 0.75" Side Port outlet |
| CL | 1 | 592-01195-2127 | Motor Bi-Rotation with NPT 1" Side Port inlet and 1" Side Port outlet |
| RN | 1 | 592-01122-7711 | Pump CCW with NPT 1.25" Rear Port On The Right inlet and 0.75" Rear Port On The Left outlet |
| RZ | 1 | 592-01122-1159 | Pump CCW with NPT 0.75" Rear Port On The Right inlet and 0.5" Rear Port On The Left outlet |
| PZ | 1 | 592-01122-1169 | Pump CCW with NPT 1" Rear Port On The Right inlet and 0.75" Rear Port On The Left outlet |
| PV | 1 | 592-01122-1177 | Pump CCW with NPT 1.25" Rear Port On The Right inlet and 1" Rear Port On The Left outlet |
| PL | 1 | 592-01291-3903 | Pump CCW with NPT 1.25" Side & Rear On The Right inlet and 0.75" Side & Rear On The Left outlet |
| QZ | 1 | 592-01122-2116 | Pump CCW with NPT 0.75" Side Port On The Right inlet and 0.75" Side Port On The Left outlet |
| KZ | 1 | 592-01122-2127 | Pump CCW with NPT 1" Side Port On The Right inlet and 1" Side Port On The Left outlet |
| LZ | 1 | 592-01122-2169 | Pump CCW with NPT 1" Side Port On The Right inlet and 0.75" Side Port On The Left outlet |
| IZ | 1 | 592-01122-2177 | Pump CCW with NPT 1.25" Side Port On The Right inlet and 1" Side Port On The Left outlet |
| JZ | 1 | 592-01122-2170 | Pump CCW with NPT 1.25" Side Port On The Right inlet and 0.75" Side Port On The Left outlet |
| NR | 1 | 592-01122-7711 | Pump CW with NPT 1.25" Rear Port On The Left inlet and 0.75" Rear Port On The Right outlet |
| ZR | 1 | 592-01122-1159 | Pump CW with NPT 0.75" Rear Port On The Left inlet and 0.5" Rear Port On The Right outlet |
| ZP | 1 | 592-01122-1169 | Pump CW with NPT 1" Rear Port On The Left inlet and 0.75" Rear Port On The Right outlet |
| VP | 1 | 592-01122-1177 | Pump CW with NPT 1.25" Rear Port On The Left inlet and 1" Rear Port On The Right outlet |
| PR | 1 | 592-01291-3903 | Pump CW with NPT 1.25" Side & Rear On The Left inlet and 0.75" Side & Rear On The Right outlet |
| ZQ | 1 | 592-01122-2116 | Pump CW with NPT 0.75" Side Port On The Left inlet and 0.75" Side Port On The Right outlet |
| ZK | 1 | 592-01122-2127 | Pump CW with NPT 1" Side Port On The Left inlet and 1" Side Port On The Right outlet |
| ZL | 1 | 592-01122-2169 | Pump CW with NPT 1" Side Port On The Left inlet and 0.75" Side Port On The Right outlet |
| ZI | 1 | 592-01122-2177 | Pump CW with NPT 1.25" Side Port On The Left inlet and 1" Side Port On The Right outlet |
| ZJ | 1 | 592-01122-2170 | Pump CW with NPT 1.25" Side Port On The Left inlet and 0.75" Side Port On The Right outlet |

Port End Cover Codes

ORB

Code QTY Part Number Description

| | | | |
|----|---|----------------|-------------------------------------------------------------------------------------------------|
| QR | 1 | 592-01195-1304 | Motor Bi-Rotation with ORB 0.5" Rear Port inlet and 0.5" Rear Port outlet |
| QP | 1 | 592-01195-1316 | Motor Bi-Rotation with ORB 0.75" Rear Port inlet and 0.75" Rear Port outlet |
| QM | 1 | 592-01195-1327 | Motor Bi-Rotation with ORB 1" Rear Port inlet and 1" Rear Port outlet |
| UP | 1 | 592-01195-2304 | Motor Bi-Rotation with ORB 0.5" Side Port inlet and 0.5" Side Port outlet |
| UQ | 1 | 592-01195-2316 | Motor Bi-Rotation with ORB 0.75" Side Port inlet and 0.75" Side Port outlet |
| UM | 1 | 592-01195-2327 | Motor Bi-Rotation with ORB 1" Side Port inlet and 1" Side Port outlet |
| RK | 1 | 592-01122-1364 | Pump CCW with ORB 0.75" Rear Port On The Right inlet and 0.625" Rear Port On The Left outlet |
| SK | 1 | 592-01122-1359 | Pump CCW with ORB 0.75" Rear Port On The Right inlet and 0.5" Rear Port On The Left outlet |
| OK | 1 | 592-01122-1368 | Pump CCW with ORB 0.75" Rear Port On The Left inlet and 0.875" Rear Port On The Right outlet |
| QK | 1 | 592-01122-1316 | Pump CCW with ORB 0.75" Rear Port On The Right inlet and 0.75" Rear Port On The Left outlet |
| PK | 1 | 592-01122-1365 | Pump CCW with ORB 0.875" Rear Port On The Right inlet and 0.625" Rear Port On The Left outlet |
| MK | 1 | 592-01122-1322 | Pump CCW with ORB 0.875" Rear Port On The Right inlet and 0.875" Rear Port On The Left outlet |
| CT | 1 | 592-01122-1327 | Pump CCW with ORB 1" Rear Port On The Right inlet and 1" Rear Port On The Left outlet |
| PT | 1 | 592-01122-1369 | Pump CCW with ORB 1" Rear Port On The Right inlet and 0.75" Rear Port On The Left outlet |
| QT | 1 | 592-01122-1366 | Pump CCW with ORB 1" Rear Port On The Right inlet and 0.625" Rear Port On The Left outlet |
| OT | 1 | 592-01122-1373 | Pump CCW with ORB 1" Rear Port On The Right inlet and 0.875" Rear Port On The Left outlet |
| ET | 1 | 592-01122-1374 | Pump CCW with ORB 1.25" Rear Port On The Right inlet and 0.875" Rear Port On The Left outlet |
| MT | 1 | 592-01122-1370 | Pump CCW with ORB 1.25" Rear Port On The Right inlet and 0.75" Rear Port On The Left outlet |
| BT | 1 | 592-01122-1377 | Pump CCW with ORB 1.25" Rear Port On The Right inlet and 1" Rear Port On The Left outlet |
| GI | 1 | 592-01122-1367 | Pump CCW with ORB BLANK On The Right inlet and 0.75" Rear Port On The Left outlet |
| SL | 1 | 592-01291-3370 | Pump CCW with ORB 1.25" Side & Rear On The Right inlet and 0.75" Side & Rear On The Left outlet |
| IA | 1 | 592-01122-2316 | Pump CCW with ORB 0.75" Side Port On The Right inlet and 0.75" Side Port On The Left outlet |
| KA | 1 | 592-01122-2364 | Pump CCW with ORB 0.75" Side Port On The Right inlet and 0.625" Side Port On The Left outlet |
| MA | 1 | 592-01122-2359 | Pump CCW with ORB 0.75" Side Port On The Right inlet and 0.5" Side Port On The Left outlet |
| XA | 1 | 592-01122-2315 | Pump CCW with ORB 0.75" Side Port On The Right inlet and BLANK On The Left outlet |
| XE | 1 | 592-01122-2322 | Pump CCW with ORB 0.875" Side Port On The Right inlet and 0.875" Side Port On The Left outlet |
| YE | 1 | 592-01122-2368 | Pump CCW with ORB 0.875" Side Port On The Right inlet and 0.75" Side Port On The Left outlet |
| WA | 1 | 592-01122-2321 | Pump CCW with ORB 0.875" Side Port On The Right inlet and BLANK On The Left outlet |
| FA | 1 | 592-01122-2360 | Pump CCW with ORB 0.875" Side Port On The Right inlet and 0.5" Side Port On The Left outlet |

Port End Cover Codes

ORB

Code QTY Part Number Description

| | | | |
|----|---|----------------|-----------------------------------------------------------------------------------------------|
| BA | 1 | 592-01122-2365 | Pump CCW with ORB 0.875" Side Port On The Right inlet and 0.625" Side Port On The Left outlet |
| WE | 1 | 592-01122-2366 | Pump CCW with ORB 1" Side Port On The Right inlet and 0.625" Side Port On The Left outlet |
| UE | 1 | 592-01122-2373 | Pump CCW with ORB 1" Side Port On The Right inlet and 0.875" Side Port On The Left outlet |
| VA | 1 | 592-01122-2326 | Pump CCW with ORB 1" Side Port On The Right inlet and BLANK On The Left outlet |
| VE | 1 | 592-01122-2369 | Pump CCW with ORB 1" Side Port On The Right inlet and 0.75" Side Port On The Left outlet |
| KE | 1 | 592-01122-2327 | Pump CCW with ORB 1" Side Port On The Right inlet and 1" Side Port On The Left outlet |
| BE | 1 | 592-01122-2374 | Pump CCW with ORB 1.25" Side Port On The Right inlet and 0.875" Side Port On The Left outlet |
| FE | 1 | 592-01122-2370 | Pump CCW with ORB 1.25" Side Port On The Right inlet and 0.75" Side Port On The Left outlet |
| IE | 1 | 592-01122-2349 | Pump CCW with ORB 1.25" Side Port On The Right inlet and 0.625" Side Port On The Left outlet |
| AE | 1 | 592-01122-2377 | Pump CCW with ORB 1.25" Side Port On The Right inlet and 1" Side Port On The Left outlet |
| UA | 1 | 592-01122-2331 | Pump CCW with ORB 1.25" Side Port On The Right inlet and BLANK On The Left outlet |
| CO | 1 | 592-01122-2372 | Pump CCW with ORB BLANK On The Right inlet and 0.875" Side Port On The Left outlet |
| DO | 1 | 592-01122-2367 | Pump CCW with ORB BLANK On The Right inlet and 0.75" Side Port On The Left outlet |
| LO | 1 | 592-01122-2363 | Pump CCW with ORB BLANK On The Right inlet and 0.625" Side Port On The Left outlet |
| MO | 1 | 592-01122-2357 | Pump CCW with ORB BLANK On The Right inlet and 0.5" Side Port On The Left outlet |
| YA | 1 | 592-01122-2376 | Pump CCW with ORB BLANK On The Right inlet and 1" Side Port On The Left outlet |
| KQ | 1 | 592-01122-1316 | Pump CW with ORB 0.75" Rear Port On The Left inlet and 0.75" Rear Port On The Right outlet |
| KR | 1 | 592-01122-1364 | Pump CW with ORB 0.75" Rear Port On The Left inlet and 0.625" Rear Port On The Right outlet |
| KS | 1 | 592-01122-1359 | Pump CW with ORB 0.75" Rear Port On The Left inlet and 0.5" Rear Port On The Right outlet |
| KM | 1 | 592-01122-1322 | Pump CW with ORB 0.875" Rear Port On The Left inlet and 0.875" Rear Port On The Right outlet |
| KO | 1 | 592-01122-1368 | Pump CW with ORB 0.875" Rear Port On The Left inlet and 0.75" Rear Port On The Right outlet |
| KP | 1 | 592-01122-1365 | Pump CW with ORB 0.875" Rear Port On The Left inlet and 0.625" Rear Port On The Right outlet |
| TO | 1 | 592-01122-1373 | Pump CW with ORB 1" Rear Port On The Left inlet and 0.875" Rear Port On The Right outlet |
| TP | 1 | 592-01122-1369 | Pump CW with ORB 1" Rear Port On The Left inlet and 0.75" Rear Port On The Right outlet |
| TQ | 1 | 592-01122-1366 | Pump CW with ORB 1" Rear Port On The Left inlet and 0.625" Rear Port On The Right outlet |
| TC | 1 | 592-01122-1327 | Pump CW with ORB 1" Rear Port On The Left inlet and 1" Rear Port On The Right outlet |
| TE | 1 | 592-01122-1374 | Pump CW with ORB 1.25" Rear Port On The Left inlet and 0.875" Rear Port On The Right outlet |
| TM | 1 | 592-01122-1370 | Pump CW with ORB 1.25" Rear Port On The Left inlet and 0.75" Rear Port On The Right outlet |
| TB | 1 | 592-01122-1377 | Pump CW with ORB 1.25" Rear Port On The Left inlet and 1" Rear Port On The Right outlet |

Port End Cover Codes

ORB

Code QTY Part Number Description

| | | | |
|----|---|----------------|------------------------------------------------------------------------------------------------|
| SR | 1 | 592-01291-3370 | Pump CW with ORB 1.25" Side & Rear On The Left inlet and 0.75" Side & Rear On The Right outlet |
| AX | 1 | 592-01122-2315 | Pump CW with ORB 0.75" Side Port On The Left inlet and BLANK On The Right outlet |
| AI | 1 | 592-01122-2316 | Pump CW with ORB 0.75" Side Port On The Left inlet and 0.75" Side Port On The Right outlet |
| AK | 1 | 592-01122-2364 | Pump CW with ORB 0.75" Side Port On The Left inlet and 0.625" Side Port On The Right outlet |
| AM | 1 | 592-01122-2359 | Pump CW with ORB 0.75" Side Port On The Left inlet and 0.5" Side Port On The Right outlet |
| AB | 1 | 592-01122-2365 | Pump CW with ORB 0.875" Side Port On The Left inlet and 0.625" Side Port On The Right outlet |
| AF | 1 | 592-01122-2360 | Pump CW with ORB 0.875" Side Port On The Left inlet and 0.5" Side Port On The Right outlet |
| AW | 1 | 592-01122-2321 | Pump CW with ORB 0.875" Side Port On The Left inlet and BLANK On The Right outlet |
| EX | 1 | 592-01122-2322 | Pump CW with ORB 0.875" Side Port On The Left inlet and 0.875" Side Port On The Right outlet |
| EY | 1 | 592-01122-2368 | Pump CW with ORB 0.875" Side Port On The Left inlet and 0.75" Side Port On The Right outlet |
| AV | 1 | 592-01122-2326 | Pump CW with ORB 1" Side Port On The Left inlet and BLANK On The Right outlet |
| EK | 1 | 592-01122-2327 | Pump CW with ORB 1" Side Port On The Left inlet and 1" Side Port On The Right outlet |
| EU | 1 | 592-01122-2373 | Pump CW with ORB 1" Side Port On The Left inlet and 0.875" Side Port On The Right outlet |
| EV | 1 | 592-01122-2369 | Pump CW with ORB 1" Side Port On The Left inlet and 0.75" Side Port On The Right outlet |
| EW | 1 | 592-01122-2366 | Pump CW with ORB 1" Side Port On The Left inlet and 0.625" Side Port On The Right outlet |
| EA | 1 | 592-01122-2377 | Pump CW with ORB 1.25" Side Port On The Left inlet and 1" Side Port On The Right outlet |
| EB | 1 | 592-01122-2374 | Pump CW with ORB 1.25" Side Port On The Left inlet and 0.875" Side Port On The Right outlet |
| EF | 1 | 592-01122-2370 | Pump CW with ORB 1.25" Side Port On The Left inlet and 0.75" Side Port On The Right outlet |
| EI | 1 | 592-01122-2349 | Pump CW with ORB 1.25" Side Port On The Left inlet and 0.625" Side Port On The Right outlet |
| AU | 1 | 592-01122-2331 | Pump CW with ORB 1.25" Side Port On The Left inlet and BLANK On The Right outlet |
| AY | 1 | 592-01122-2376 | Pump CW with ORB BLANK On The Left inlet and 1" Side Port On The Right outlet |
| OC | 1 | 592-01122-2372 | Pump CW with ORB BLANK On The Left inlet and 0.875" Side Port On The Right outlet |
| OD | 1 | 592-01122-2367 | Pump CW with ORB BLANK On The Left inlet and 0.75" Side Port On The Right outlet |
| OL | 1 | 592-01122-2363 | Pump CW with ORB BLANK On The Left inlet and 0.625" Side Port On The Right outlet |
| OM | 1 | 592-01122-2357 | Pump CW with ORB BLANK On The Left inlet and 0.5" Side Port On The Right outlet |
| IG | 1 | 592-01122-1367 | Pump CW with ORB BLANK On The Left inlet and 0.75" Rear Port On The Right outlet |

Port End Cover Codes

SF

Code QTY Part Number Description

| | | | |
|----|---|----------------|--------------------------------------------------------------------------------------------|
| CR | 1 | 592-01195-2216 | Motor Bi-Rotation with SF 0.75" Side Port inlet and 0.75" Side Port outlet |
| CQ | 1 | 592-01195-2227 | Motor Bi-Rotation with SF 1" Side Port inlet and 1" Side Port outlet |
| LN | 1 | 592-01233-2277 | Pump CCW with SF 1.25" Side Port On The Right inlet and 1" Side Port On The Left outlet |
| LD | 1 | 592-01122-2259 | Pump CCW with SF 0.75" Side Port On The Right inlet and 0.5" Side Port On The Left outlet |
| EN | 1 | 592-01291-2215 | Pump CCW with SF 0.75" Side Port On The Right inlet and BLANK On The Left outlet |
| KD | 1 | 592-01122-2216 | Pump CCW with SF 0.75" Side Port On The Right inlet and 0.75" Side Port On The Left outlet |
| ID | 1 | 592-01122-2269 | Pump CCW with SF 1" Side Port On The Right inlet and 0.75" Side Port On The Left outlet |
| JD | 1 | 592-01122-2261 | Pump CCW with SF 1" Side Port On The Right inlet and 0.5" Side Port On The Left outlet |
| DN | 1 | 592-01291-2226 | Pump CCW with SF 1" Side Port On The Right inlet and BLANK On The Left outlet |
| IN | 1 | 592-01122-2267 | Pump CCW with SF BLANK On The Right inlet and 0.75" Side Port On The Left outlet |
| KN | 1 | 592-01122-2257 | Pump CCW with SF BLANK On The Right inlet and 0.5" Side Port On The Left outlet |
| NL | 1 | 592-01233-2277 | Pump CW with SF 1.25" Side Port On The Left inlet and 1" Side Port On The Right outlet |
| NE | 1 | 592-01122-2215 | Pump CW with SF 0.75" Side Port On The Left inlet and BLANK On The Right outlet |
| DK | 1 | 592-01122-2216 | Pump CW with SF 0.75" Side Port On The Left inlet and 0.75" Side Port On The Right outlet |
| DL | 1 | 592-01122-2259 | Pump CW with SF 0.75" Side Port On The Left inlet and 0.5" Side Port On The Right outlet |
| ND | 1 | 592-01122-2226 | Pump CW with SF 1" Side Port On The Left inlet and BLANK On The Right outlet |
| DI | 1 | 592-01122-2269 | Pump CW with SF 1" Side Port On The Left inlet and 0.75" Side Port On The Right outlet |
| DJ | 1 | 592-01122-2261 | Pump CW with SF 1" Side Port On The Left inlet and 0.5" Side Port On The Right outlet |
| NI | 1 | 592-01122-2267 | Pump CW with SF BLANK On The Left inlet and 0.75" Side Port On The Right outlet |
| NK | 1 | 592-01122-2257 | Pump CW with SF BLANK On The Left inlet and 0.5" Side Port On The Right outlet |

Port End cover Small Parts Codes

| Code | QTY | Part Number | Description |
|-------------|------------|--------------------|--------------------|
| AH | 1 | MA-0558-1XS | RING SEAL |

Gear Housing Codes

| Code | QTY | Part Number | Description |
|-------------|------------|--------------------|-----------------------------------------------|
| ZA02 | 1 | 577-01109-02 | .650" wide Pump gear housing for 0.25" gear |
| ZA03 | 1 | 577-01109-03 | .775" wide Pump gear housing for 0.375" gear |
| ZA04 | 1 | 577-01109-04 | .837" wide Pump gear housing for 0.437 gear |
| ZA05 | 1 | 577-01109-05 | .900" wide Pump gear housing for 0.5" gear |
| ZA07 | 1 | 577-01109-07 | 1.15" wide Pump gear housing for 0.75" gear |
| ZA08 | 1 | 577-01109-08 | 1.27" wide Pump gear housing for 0.875" gear |
| ZA10 | 1 | 577-01109-10 | 1.40" wide Pump gear housing for 1" gear |
| ZA11 | 1 | 577-01109-11 | 1.52" wide Pump gear housing for 1.125" gear |
| ZA12 | 1 | 577-01109-12 | 1.65" wide Pump gear housing for 1.25" gear |
| ZA13 | 1 | 577-01109-13 | 1.77" wide Pump gear housing for 1.375" gear |
| ZA15 | 1 | 577-01109-15 | 1.90" wide Pump gear housing for 1.5" gear |
| ZA16 | 1 | 577-01109-16 | 2.025" wide Pump gear housing for 1.625" gear |
| ZA20 | 1 | 577-01109-20 | 2.40" wide Pump gear housing for 2" gear |
| DA05 | 1 | 577-01158-05 | .900" wide Motor gear housing for 0.5" gear |
| DA07 | 1 | 577-01158-07 | 1.15" wide Motor gear housing for 0.75" gear |
| DA10 | 1 | 577-01158-10 | 1.40" wide Motor gear housing for 1" gear |
| DA12 | 1 | 577-01158-12 | 1.65 wide Motor gear housing for 1.25" gear |
| DA15 | 1 | 577-01158-15 | 1.90" wide Motor gear housing for 1.5" gear |
| DA17 | 1 | 577-01158-17 | 2.15" wide Motor gear housing for 1.75" gear |
| DA20 | 1 | 577-01158-20 | 2.40" wide Motor gear housing for 2" gear |
| ZA17 | 1 | 577-01109-17 | 2.15" wide Both gear housing for 1.75" gear |

Gear Housing Small Parts Codes

| Code | QTY | Part Number | Description |
|-------------|------------|--------------------|------------------------------------|
| ALL | 2 | 947-01105 | 124 THRUST PLATE (PUMP) |
| ALL | 2 | 947-01106 | 124 THRUST PLATE BACK-UP (PUMP) |
| ALL | 2 | 947-01107 | 124 THRUST PLATE SEAL (PUMP) |
| | 2 | 947-01107-V | THRUST PLATES SEALS (VITON) |
| ALL | 2 | TA-2995-152 | 124 HOUSING GASKET SEAL (PUMP) |
| | 2 | ZA-2995-152 | SQUARE GASKET SEAL (VITON) |
| | 4 | 280-1971-071 | 124 DOWELL PIN |
| ALL | 2 | 947-01138 | 124 THRUST PLATE (MOTOR) |
| ALL | 2 | 947-01139 | 124 THRUST PLATE BACK-UP (MOTOR) |
| ALL | 2 | 947-01140 | 124 THRUST PLATE SIDE SEAL (MOTOR) |
| ALL | 2 | 947-01141 | 124 THRUST PLATE END SEAL (MOTOR) |
| ALL | 2 | TA-2995-153 | 124 HOUSING GASKET SEAL (MOTOR) |
| ALL | 4 | 280-1971-071 | 124 DOWELL PIN |

Gear Shaft Codes

Integral

Code QTY Part Number Description

| | | | |
|------|---|--------------|---------------------------------------------------------------------------------------------------------------------|
| 99 | 1 | 024-01236-20 | MULTIPLE Gear Set With 2" Gear Width and Clutch Pump TAPERED with 1.925" Shaft Extension |
| 99 | 1 | 024-01236-17 | MULTIPLE Gear Set With 1.75" Gear Width and Clutch Pump TAPERED with 1.925" Shaft Extension |
| 99 | 1 | 024-01236-15 | MULTIPLE Gear Set With 1.5" Gear Width and Clutch Pump TAPERED with 1.925" Shaft Extension |
| 99 | 1 | 024-01236-12 | MULTIPLE Gear Set With 1.25" Gear Width and Clutch Pump TAPERED with 1.925" Shaft Extension |
| 99 | 1 | 024-01236-10 | MULTIPLE Gear Set With 1" Gear Width and Clutch Pump TAPERED with 1.925" Shaft Extension |
| 86XL | 1 | 024-01331-12 | MULTIPLE Gear Set With 1.25" Gear Width and SAE "A" (5/8" Dia.- KEYED Extra long) KEYED with 2.312" Shaft Extension |
| 86XL | 1 | 024-01331-10 | MULTIPLE Gear Set With 1" Gear Width and SAE "A" (5/8" Dia.- KEYED Extra long) KEYED with 2.312" Shaft Extension |
| 86XL | 1 | 024-01331-07 | MULTIPLE Gear Set With 0.75" Gear Width and SAE "A" (5/8" Dia.- KEYED Extra long) KEYED with 2.312" Shaft Extension |
| 86XL | 1 | 024-01331-05 | MULTIPLE Gear Set With 0.5" Gear Width and SAE "A" (5/8" Dia.- KEYED Extra long) KEYED with 2.312" Shaft Extension |
| 86 | 1 | 024-01215-20 | MULTIPLE Gear Set With 2" Gear Width and SAE "A" (5/8" Dia.- KEYED) KEYED with 1.250" |
| 86 | 1 | 024-01215-17 | MULTIPLE Gear Set With 1.75" Gear Width and SAE "A" (5/8" Dia.- KEYED) KEYED with 1.250" |
| 86 | 1 | 024-01215-15 | MULTIPLE Gear Set With 1.5" Gear Width and SAE "A" (5/8" Dia.- KEYED) KEYED with 1.250" |
| 86 | 1 | 024-01215-12 | MULTIPLE Gear Set With 1.25" Gear Width and SAE "A" (5/8" Dia.- KEYED) KEYED with 1.250" |
| 86 | 1 | 024-01215-10 | MULTIPLE Gear Set With 1" Gear Width and SAE "A" (5/8" Dia.- KEYED) KEYED with 1.250" |
| 86 | 1 | 024-01215-07 | MULTIPLE Gear Set With 0.75" Gear Width and SAE "A" (5/8" Dia.- KEYED) KEYED with 1.250" |
| 86 | 1 | 024-01215-05 | MULTIPLE Gear Set With 0.5" Gear Width and SAE "A" (5/8" Dia.- KEYED) KEYED with 1.250" |
| 85 | 1 | 024-01214-20 | MULTIPLE Gear Set With 2" Gear Width and SAE "A" (5/8" Dia.- 9 TOOTH) SPLINE with 1.250" |
| 85 | 1 | 024-01214-17 | MULTIPLE Gear Set With 1.75" Gear Width and SAE "A" (5/8" Dia.- 9 TOOTH) SPLINE with 1.250" |
| 85 | 1 | 024-01214-15 | MULTIPLE Gear Set With 1.5" Gear Width and SAE "A" (5/8" Dia.- 9 TOOTH) SPLINE with 1.250" |
| 85 | 1 | 024-01214-12 | MULTIPLE Gear Set With 1.25" Gear Width and SAE "A" (5/8" Dia.- 9 TOOTH) SPLINE with 1.250" |
| 85 | 1 | 024-01214-10 | MULTIPLE Gear Set With 1" Gear Width and SAE "A" (5/8" Dia.- 9 TOOTH) SPLINE with 1.250" |
| 85 | 1 | 024-01214-07 | MULTIPLE Gear Set With 0.75" Gear Width and SAE "A" (5/8" Dia.- 9 TOOTH) SPLINE with 1.250" |
| 85 | 1 | 024-01214-05 | MULTIPLE Gear Set With 0.5" Gear Width and SAE "A" (5/8" Dia.- 9 TOOTH) SPLINE with 1.250" |
| 81 | 1 | 024-01344-20 | MULTIPLE Gear Set With 2" Gear Width and SAE "AH" (3/4" Dia.- 11 TOOTH) SPLINE with 1.487" Shaft Extension |
| 81 | 1 | 024-01344-17 | MULTIPLE Gear Set With 1.75" Gear Width and SAE "AH" (3/4" Dia.- 11 TOOTH) SPLINE with 1.487" Shaft Extension |
| 81 | 1 | 024-01344-15 | MULTIPLE Gear Set With 1.5" Gear Width and SAE "AH" (3/4" Dia.- 11 TOOTH) SPLINE with 1.487" Shaft Extension |
| 81 | 1 | 024-01344-12 | MULTIPLE Gear Set With 1.25" Gear Width and SAE "AH" (3/4" Dia.- 11 TOOTH) SPLINE with 1.487" Shaft Extension |

Gear Shaft Codes

Integral

Code QTY Part Number Description

| | | | |
|------|---|--------------|---------------------------------------------------------------------------------------------------------------|
| 81 | 1 | 024-01344-10 | MULTIPLE Gear Set With 1" Gear Width and SAE "AH" (3/4" Dia.- 11 TOOTH) SPLINE with 1.487" Shaft Extension |
| 81 | 1 | 024-01344-07 | MULTIPLE Gear Set With 0.75" Gear Width and SAE "AH" (3/4" Dia.- 11 TOOTH) SPLINE with 1.487" Shaft Extension |
| 75 | 1 | 024-01276-15 | MULTIPLE Gear Set With 1.5" Gear Width and W/M12 x 1.5" EXTERNAL THREAD TAPERED with 1.555" Shaft Extension |
| 75 | 1 | 024-01276-12 | MULTIPLE Gear Set With 1.25" Gear Width and W/M12 x 1.5" EXTERNAL THREAD TAPERED with 1.555" Shaft Extension |
| 75 | 1 | 024-01276-10 | MULTIPLE Gear Set With 1" Gear Width and W/M12 x 1.5" EXTERNAL THREAD TAPERED with 1.555" Shaft Extension |
| 75 | 1 | 024-01276-07 | MULTIPLE Gear Set With 0.75" Gear Width and W/M12 x 1.5" EXTERNAL THREAD TAPERED with 1.555" Shaft Extension |
| 75 | 1 | 024-01276-05 | MULTIPLE Gear Set With 0.5" Gear Width and W/M12 x 1.5" EXTERNAL THREAD TAPERED with 1.555" Shaft Extension |
| 55XL | 1 | 024-01268-20 | MULTIPLE Gear Set With 2" Gear Width and SAE "B" (7/8" Dia. KEYED) KEYED with 2.281" Shaft Extension |
| 55XL | 1 | 024-01268-17 | MULTIPLE Gear Set With 1.75" Gear Width and SAE "B" (7/8" Dia. KEYED) KEYED with 2.281" Shaft Extension |
| 55XL | 1 | 024-01268-15 | MULTIPLE Gear Set With 1.5" Gear Width and SAE "B" (7/8" Dia. KEYED) KEYED with 2.281" Shaft Extension |
| 55XL | 1 | 024-01268-12 | MULTIPLE Gear Set With 1.25" Gear Width and SAE "B" (7/8" Dia. KEYED) KEYED with 2.281" Shaft Extension |
| 55XL | 1 | 024-01268-10 | MULTIPLE Gear Set With 1" Gear Width and SAE "B" (7/8" Dia. KEYED) KEYED with 2.281" Shaft Extension |
| 55XL | 1 | 024-01268-07 | MULTIPLE Gear Set With 0.75" Gear Width and SAE "B" (7/8" Dia. KEYED) KEYED with 2.281" Shaft Extension |
| 55XL | 1 | 024-01268-05 | MULTIPLE Gear Set With 0.5" Gear Width and SAE "B" (7/8" Dia. KEYED) KEYED with 2.281" Shaft Extension |
| 55 | 1 | 024-01213-20 | MULTIPLE Gear Set With 2" Gear Width and SAE "B" (7/8" Dia. KEYED) KEYED with 1.625" Shaft Extension |
| 55 | 1 | 024-01213-17 | MULTIPLE Gear Set With 1.75" Gear Width and SAE "B" (7/8" Dia. KEYED) KEYED with 1.625" Shaft Extension |
| 55 | 1 | 024-01213-15 | MULTIPLE Gear Set With 1.5" Gear Width and SAE "B" (7/8" Dia. KEYED) KEYED with 1.625" Shaft Extension |
| 55 | 1 | 024-01213-12 | MULTIPLE Gear Set With 1.25" Gear Width and SAE "B" (7/8" Dia. KEYED) KEYED with 1.625" Shaft Extension |
| 55 | 1 | 024-01213-11 | MULTIPLE Gear Set With 1.125" Gear Width and SAE "B" (7/8" Dia. KEYED) KEYED with 1.625" Shaft Extension |
| 55 | 1 | 024-01213-10 | MULTIPLE Gear Set With 1" Gear Width and SAE "B" (7/8" Dia. KEYED) KEYED with 1.625" Shaft Extension |
| 55 | 1 | 024-01213-07 | MULTIPLE Gear Set With 0.75" Gear Width and SAE "B" (7/8" Dia. KEYED) KEYED with 1.625" Shaft Extension |
| 55 | 1 | 024-01213-05 | MULTIPLE Gear Set With 0.5" Gear Width and SAE "B" (7/8" Dia. KEYED) KEYED with 1.625" Shaft Extension |
| 54 | 1 | 024-01104-20 | MULTIPLE Gear Set With 2" Gear Width and SAE "B" (7/8" Dia.- 13 TOOTH) SPLINE with 1.625" Shaft Extension |
| 54 | 1 | 024-01104-17 | MULTIPLE Gear Set With 1.75" Gear Width and SAE "B" (7/8" Dia.- 13 TOOTH) SPLINE with 1.625" Shaft Extension |
| 54 | 1 | 024-01104-15 | MULTIPLE Gear Set With 1.5" Gear Width and SAE "B" (7/8" Dia.- 13 TOOTH) SPLINE with 1.625" Shaft Extension |
| 54 | 1 | 024-01104-12 | MULTIPLE Gear Set With 1.25" Gear Width and SAE "B" (7/8" Dia.- 13 TOOTH) SPLINE with 1.625" Shaft Extension |

Gear Shaft Codes

Integral

Code QTY Part Number Description

| | | | |
|------|---|--------------|---------------------------------------------------------------------------------------------------------------------------------|
| 54 | 1 | 024-01104-10 | MULTIPLE Gear Set With 1" Gear Width and SAE "B" (7/8" Dia.- 13 TOOTH) SPLINE with 1.625" Shaft Extension |
| 54 | 1 | 024-01104-08 | MULTIPLE Gear Set With 0.875" Gear Width and SAE "B" (7/8" Dia.- 13 TOOTH) SPLINE with 1.625" Shaft Extension |
| 54 | 1 | 024-01104-07 | MULTIPLE Gear Set With 0.75" Gear Width and SAE "B" (7/8" Dia.- 13 TOOTH) SPLINE with 1.625" Shaft Extension |
| 54 | 1 | 024-01104-05 | MULTIPLE Gear Set With 0.5" Gear Width and SAE "B" (7/8" Dia.- 13 TOOTH) SPLINE with 1.625" Shaft Extension |
| 54 | 1 | 024-01104-03 | MULTIPLE Gear Set With 0.375" Gear Width and SAE "B" (7/8" Dia.- 13 TOOTH) SPLINE with 1.625" Shaft Extension |
| 54 | 1 | 024-01104-02 | MULTIPLE Gear Set With 0.25" Gear Width and SAE "B" (7/8" Dia.- 13 TOOTH) SPLINE with 1.625" Shaft Extension |
| 45 | 1 | 024-01284-20 | MULTIPLE Gear Set With 2" Gear Width and 7/8" Dia, TAPERED KEYED W/5/16"-24 INT. THREAD TAPERED with 2.281" Shaft Extension |
| 45 | 1 | 024-01284-17 | MULTIPLE Gear Set With 1.75" Gear Width and 7/8" Dia, TAPERED KEYED W/5/16"-24 INT. THREAD TAPERED with 2.281" Shaft Extension |
| 45 | 1 | 024-01284-15 | MULTIPLE Gear Set With 1.5" Gear Width and 7/8" Dia, TAPERED KEYED W/5/16"-24 INT. THREAD TAPERED with 2.281" Shaft Extension |
| 45 | 1 | 024-01284-13 | MULTIPLE Gear Set With 1.375" Gear Width and 7/8" Dia, TAPERED KEYED W/5/16"-24 INT. THREAD TAPERED with 2.281" |
| 45 | 1 | 024-01284-12 | MULTIPLE Gear Set With 1.25" Gear Width and 7/8" Dia, TAPERED KEYED W/5/16"-24 INT. THREAD TAPERED with 2.281" Shaft Extension |
| 45 | 1 | 024-01284-11 | MULTIPLE Gear Set With 1.125" Gear Width and 7/8" Dia, TAPERED KEYED W/5/16"-24 INT. THREAD TAPERED with 2.281" Shaft Extension |
| 45 | 1 | 024-01284-10 | MULTIPLE Gear Set With 1" Gear Width and 7/8" Dia, TAPERED KEYED W/5/16"-24 INT. THREAD TAPERED with 2.281" Shaft Extension |
| 45 | 1 | 024-01284-08 | MULTIPLE Gear Set With 0.875" Gear Width and 7/8" Dia, TAPERED KEYED W/5/16"-24 INT. THREAD TAPERED with 2.281" Shaft Extension |
| 45 | 1 | 024-01284-07 | MULTIPLE Gear Set With 0.75" Gear Width and 7/8" Dia, TAPERED KEYED W/5/16"-24 INT. THREAD TAPERED with 2.281" Shaft Extension |
| 45 | 1 | 024-01284-05 | MULTIPLE Gear Set With 0.5" Gear Width and 7/8" Dia, TAPERED KEYED W/5/16"-24 INT. THREAD TAPERED with 2.281" Shaft Extension |
| 24 | 1 | 024-01416-20 | MULTIPLE Gear Set With 2" Gear Width and SAE "AH" (3/4" Dia.-KEYED) KEYED with 1.625" Shaft Extension |
| 24 | 1 | 024-01416-17 | MULTIPLE Gear Set With 1.75" Gear Width and SAE "AH" (3/4" Dia.-KEYED) KEYED with 1.625" Shaft Extension |
| 24 | 1 | 024-01416-15 | MULTIPLE Gear Set With 1.5" Gear Width and SAE "AH" (3/4" Dia.-KEYED) KEYED with 1.625" Shaft Extension |
| 24 | 1 | 024-01416-12 | MULTIPLE Gear Set With 1.25" Gear Width and SAE "AH" (3/4" Dia.-KEYED) KEYED with 1.625" Shaft Extension |
| 24 | 1 | 024-01416-10 | MULTIPLE Gear Set With 1" Gear Width and SAE "AH" (3/4" Dia.-KEYED) KEYED with 1.625" Shaft Extension |
| 24 | 1 | 024-01416-07 | MULTIPLE Gear Set With 0.75" Gear Width and SAE "AH" (3/4" Dia.-KEYED) KEYED with 1.625" Shaft Extension |
| 24 | 1 | 024-01416-05 | MULTIPLE Gear Set With 0.5" Gear Width and SAE "AH" (3/4" Dia.-KEYED) KEYED with 1.625" Shaft Extension |
| 86XL | 1 | 024-01331-17 | MULTIPLE Gear Set With 1.75" Gear Width and SAE "A" (5/8" Dia.- KEYED Extra long) KEYED with 2.312" Shaft Extension |
| 86XL | 1 | 024-01331-15 | MULTIPLE Gear Set With 1.5" Gear Width and SAE "A" (5/8" Dia.- KEYED Extra long) KEYED with 2.312" Shaft Extension |
| 81 | 1 | 024-01344-05 | MULTIPLE Gear Set With 0.5" Gear Width and SAE "AH" (3/4" Dia.-KEYED) SPLINE with 1.487" Shaft Extension |

Gear Shaft Codes

Integral

Code QTY Part Number Description

| | | | |
|----|---|--------------|----------------------------------------------------------------------------------------------------------|
| 55 | 1 | 024-01213-13 | MULTIPLE Gear Set With 1.375" Gear Width and SAE "B" (7/8" Dia. KEYED) KEYED with 1.625" Shaft Extension |
|----|---|--------------|----------------------------------------------------------------------------------------------------------|

| Code | QTY | Part Number | Description |
|-------------|------------|--------------------|------------------------------------------|
| 20 | 1 | 996-01103-20 | MULTIPLE Gear Set with 2" Gear Width |
| 17 | 1 | 996-01103-17 | MULTIPLE Gear Set with 1.75" Gear Width |
| 15 | 1 | 996-01103-15 | MULTIPLE Gear Set with 1.5" Gear Width |
| 12 | 1 | 996-01103-12 | MULTIPLE Gear Set with 1.25" Gear Width |
| 11 | 1 | 996-01103-11 | MULTIPLE Gear Set with 1.125" Gear Width |
| 10 | 1 | 996-01103-10 | MULTIPLE Gear Set with 1" Gear Width |
| 08 | 1 | 996-01103-08 | MULTIPLE Gear Set with 0.875" Gear Width |
| 07 | 1 | 996-01103-07 | MULTIPLE Gear Set with 0.75" Gear Width |
| 05 | 1 | 996-01103-05 | MULTIPLE Gear Set with 0.5" Gear Width |
| 04 | 1 | 996-01103-04 | MULTIPLE Gear Set with 0.437 Gear Width |
| 03 | 1 | 996-01103-03 | MULTIPLE Gear Set with 0.375" Gear Width |
| 02 | 1 | 996-01103-02 | MULTIPLE Gear Set with 0.25" Gear Width |

Gear Shaft Codes

| Code | QTY | Part Number | Description |
|------|-----|-------------|-------------|
|------|-----|-------------|-------------|

| | | | |
|--|---|--|-----------------------------------------|
| | 0 | | MULTIPLE Gear Set with 0.25" Gear Width |
|--|---|--|-----------------------------------------|

Drive Shaft Small Parts

| Code | QTY | Part Number | Description | Type |
|------|-----|-------------|-------------|------|
|------|-----|-------------|-------------|------|

Connecting Shafts

| Code | QTY | Part Number | Description |
|------|-----|-------------|----------------------|
| 1 | 1 | 022-01125 | 124 CONNECTING SHAFT |

Bearing Carrier Codes

BLANK

| Code | QTY | Part Number | Description |
|------|-----|-------------|-------------|
|------|-----|-------------|-------------|

| | | | |
|---|---|-----------|---------------------------------------------------------------------------------|
| C | 1 | 576-01127 | CCW Pump NONE with BLANK BLANK inlet and BLANK BLANK outlet connecting to BLANK |
| B | 1 | 576-01127 | CW Pump NONE with BLANK BLANK inlet and BLANK BLANK outlet connecting to BLANK |

Bearing Carrier Codes

BSPP

Code QTY Part Number Description

| | | | |
|----|---|----------------|------------------------------------------------------------------------------------------|
| WL | 1 | 576-01127-1459 | CCW Pump NONE with 0.75" BSPP inlet and 0.5" BSPP outlet connecting to FRONT |
| YG | 1 | 576-01127-1416 | CCW Pump NONE with 0.75" BSPP inlet and 0.75" BSPP outlet connecting to FRONT |
| XG | 1 | 576-01127-1461 | CCW Pump NONE with 1" BSPP inlet and 0.5" BSPP outlet connecting to FRONT |
| WG | 1 | 576-01127-1469 | CCW Pump NONE with 1" BSPP inlet and 0.75" BSPP outlet connecting to FRONT |
| PG | 1 | 576-01127-1473 | CCW Pump NONE with 1" BSPP inlet and 0.875" BSPP outlet connecting to FRONT |
| OG | 1 | 576-01127-1427 | CCW Pump NONE with 1" BSPP inlet and 1" BSPP outlet connecting to FRONT |
| NG | 1 | 576-01127-1462 | CCW Pump NONE with 1.25" BSPP inlet and 0.5" BSPP outlet connecting to FRONT |
| YJ | 1 | 576-01127-1470 | CCW Pump NONE with 1.25" BSPP inlet and 0.75" BSPP outlet connecting to FRONT |
| XJ | 1 | 576-01127-1474 | CCW Pump NONE with 1.25" BSPP inlet and 0.875" BSPP outlet connecting to FRONT |
| WJ | 1 | 576-01127-1477 | CCW Pump NONE with 1.25" BSPP inlet and 1" BSPP outlet connecting to FRONT |
| VJ | 1 | 576-01127-1432 | CCW Pump NONE with 1.25" BSPP inlet and 1.25" BSPP outlet connecting to FRONT |
| UJ | 1 | 576-01127-1471 | CCW Pump NONE with 1.5" BSPP inlet and 0.75" BSPP outlet connecting to FRONT |
| TJ | 1 | 576-01127-1475 | CCW Pump NONE with 1.5" BSPP inlet and 0.875" BSPP outlet connecting to FRONT |
| SJ | 1 | 576-01127-1478 | CCW Pump NONE with 1.5" BSPP inlet and 1" BSPP outlet connecting to FRONT |
| RJ | 1 | 576-01127-1481 | CCW Pump NONE with 1.5" BSPP inlet and 1.25" BSPP outlet connecting to FRONT |
| QJ | 1 | 576-01127-1437 | CCW Pump NONE with 1.5" BSPP inlet and 1.5" BSPP outlet connecting to FRONT |
| LW | 1 | 576-01127-1459 | CW Pump NONE with 0.75" BSPP inlet and 0.5" BSPP outlet connecting to FRONT |
| GY | 1 | 576-01127-1416 | CW Pump NONE with 0.75" BSPP inlet and 0.75" BSPP outlet connecting to FRONT |
| GW | 1 | 576-01127-1469 | CW Pump NONE with 1" BSPP inlet and 0.75" BSPP outlet connecting to FRONT |
| GP | 1 | 576-01127-1473 | CW Pump NONE with 1" BSPP inlet and 0.875" BSPP outlet connecting to FRONT |
| GO | 1 | 576-01127-1427 | CW Pump NONE with 1" BSPP inlet and 1" BSPP outlet connecting to FRONT |
| GN | 1 | 576-01127-1462 | CW Pump NONE with 1.25" BSPP inlet and 0.5" BSPP outlet connecting to FRONT |
| JY | 1 | 576-01127-1470 | CW Pump NONE with 1.25" BSPP inlet and 0.75" BSPP outlet connecting to FRONT |
| JX | 1 | 576-01127-1474 | CW Pump NONE with 1.25" BSPP inlet and 0.875" BSPP outlet connecting to FRONT |
| JW | 1 | 576-01127-1477 | CW Pump NONE with 1.25" BSPP inlet and 1" BSPP outlet connecting to FRONT |
| JV | 1 | 576-01127-1432 | CW Pump NONE with 1.25" BSPP inlet and 1.25" BSPP outlet connecting to FRONT |
| JU | 1 | 576-01127-1471 | CW Pump NONE with 1.5" BSPP inlet and 0.75" BSPP outlet connecting to FRONT |
| JT | 1 | 576-01127-1475 | CW Pump NONE with 1.5" BSPP inlet and 0.875" BSPP outlet connecting to FRONT |
| JS | 1 | 576-01127-1478 | CW Pump NONE with 1.5" BSPP inlet and 1" BSPP outlet connecting to FRONT |
| JR | 1 | 576-01127-1481 | CW Pump NONE with 1.5" BSPP inlet and 1.25" BSPP outlet connecting to FRONT |
| JQ | 1 | 576-01127-1437 | CW Pump NONE with 1.5" BSPP inlet and 1.5" BSPP outlet connecting to FRONT |
| GX | 1 | 576-01127-1461 | CW Pump Single In Single Out with 1" BSPP inlet and 0.5" BSPP outlet connecting to FRONT |

Bearing Carrier Codes

ORB

Code QTY Part Number Description

| | | | |
|----|---|----------------|-----------------------------------------------------------------------------------------------------------------------------------|
| YF | 1 | 576-01129-6373 | CW Pump Dual Outlet with 1" ORB inlet and 1" ORB top outlet connecting to FRONT Plus 0.875" ORB bottom outlet connecting to REAR |
| VL | 1 | 576-01127-1359 | CCW Pump NONE with 0.75" ORB inlet and 0.5" ORB outlet connecting to FRONT |
| UL | 1 | 576-01127-1364 | CCW Pump NONE with 0.75" ORB inlet and 0.625" ORB outlet connecting to FRONT |
| SL | 1 | 576-01127-1361 | CCW Pump NONE with 1" ORB inlet and 0.5" ORB outlet connecting to FRONT |
| BV | 1 | 576-01129-6359 | CCW Pump NONE with 1" ORB inlet and 0.5" ORB top outlet connecting to REAR Plus 0.75" ORB bottom outlet connecting to FRONT |
| BX | 1 | 576-01129-6304 | CCW Pump NONE with 1" ORB inlet and 0.5" ORB top outlet connecting to REAR Plus 0.5" ORB bottom outlet connecting to FRONT |
| BW | 1 | 576-01129-6311 | CCW Pump NONE with 1" ORB inlet and 0.625" ORB top outlet connecting to REAR Plus 0.625" ORB bottom outlet connecting to FRONT |
| BU | 1 | 576-01129-6364 | CCW Pump NONE with 1" ORB inlet and 0.625" ORB top outlet connecting to REAR Plus 0.75" ORB bottom outlet connecting to FRONT |
| RL | 1 | 576-01127-1366 | CCW Pump NONE with 1" ORB inlet and 0.625" ORB outlet connecting to FRONT |
| QL | 1 | 576-01127-1369 | CCW Pump NONE with 1" ORB inlet and 0.75" ORB outlet connecting to FRONT |
| BR | 1 | 576-01129-6369 | CCW Pump NONE with 1" ORB inlet and 0.75" ORB top outlet connecting to REAR Plus 1" ORB bottom outlet connecting to FRONT |
| BS | 1 | 576-01129-6316 | CCW Pump NONE with 1" ORB inlet and 0.75" ORB top outlet connecting to REAR Plus 0.75" ORB bottom outlet connecting to FRONT |
| BQ | 1 | 576-01129-6322 | CCW Pump NONE with 1" ORB inlet and 0.875" ORB top outlet connecting to REAR Plus 0.875" ORB bottom outlet connecting to FRONT |
| PL | 1 | 576-01127-1373 | CCW Pump NONE with 1" ORB inlet and 0.875" ORB outlet connecting to FRONT |
| FY | 1 | 576-01129-6373 | CCW Pump NONE with 1" ORB inlet and 0.875" ORB top outlet connecting to REAR Plus 1" ORB bottom outlet connecting to FRONT |
| FX | 1 | 576-01129-6327 | CCW Pump NONE with 1" ORB inlet and 1" ORB top outlet connecting to REAR Plus 1" ORB bottom outlet connecting to FRONT |
| ML | 1 | 576-01127-1327 | CCW Pump NONE with 1" ORB inlet and 1" ORB outlet connecting to FRONT |
| FU | 1 | 576-01129-5359 | CCW Pump NONE with 1.25" ORB inlet and 0.5" ORB top outlet connecting to REAR Plus 0.75" ORB bottom outlet connecting to FRONT |
| FW | 1 | 576-01129-5304 | CCW Pump NONE with 1.25" ORB inlet and 0.5" ORB top outlet connecting to REAR Plus 0.5" ORB bottom outlet connecting to FRONT |
| KL | 1 | 576-01127-1362 | CCW Pump NONE with 1.25" ORB inlet and 0.5" ORB outlet connecting to FRONT |
| AL | 1 | 576-01127-1349 | CCW Pump NONE with 1.25" ORB inlet and 0.625" ORB outlet connecting to FRONT |
| FT | 1 | 576-01129-5364 | CCW Pump NONE with 1.25" ORB inlet and 0.625" ORB top outlet connecting to REAR Plus 0.75" ORB bottom outlet connecting to FRONT |
| FV | 1 | 576-01129-5311 | CCW Pump NONE with 1.25" ORB inlet and 0.625" ORB top outlet connecting to REAR Plus 0.625" ORB bottom outlet connecting to FRONT |
| FR | 1 | 576-01129-5369 | CCW Pump NONE with 1.25" ORB inlet and 0.75" ORB top outlet connecting to REAR Plus 1" ORB bottom outlet connecting to FRONT |
| FS | 1 | 576-01129-5316 | CCW Pump NONE with 1.25" ORB inlet and 0.75" ORB top outlet connecting to REAR Plus 0.75" ORB bottom outlet connecting to FRONT |
| PJ | 1 | 576-01127-1370 | CCW Pump NONE with 1.25" ORB inlet and 0.75" ORB outlet connecting to FRONT |
| OJ | 1 | 576-01127-1374 | CCW Pump NONE with 1.25" ORB inlet and 0.875" ORB outlet connecting to FRONT |
| FP | 1 | 576-01129-5373 | CCW Pump NONE with 1.25" ORB inlet and 0.875" ORB top outlet connecting to REAR Plus 1" ORB bottom outlet connecting to FRONT |
| FQ | 1 | 576-01129-5322 | CCW Pump NONE with 1.25" ORB inlet and 0.875" ORB top outlet connecting to REAR Plus 0.875" ORB bottom outlet connecting to FRONT |

Bearing Carrier Codes

ORB

Code QTY Part Number Description

| | | | |
|----|---|----------------|----------------------------------------------------------------------------------------------------------------------------------|
| FO | 1 | 576-01129-5327 | CCW Pump NONE with 1.25" ORB inlet and 1" ORB top outlet connecting to REAR Plus 1" ORB bottom outlet connecting to FRONT |
| NJ | 1 | 576-01127-1377 | CCW Pump NONE with 1.25" ORB inlet and 1" ORB outlet connecting to FRONT |
| MJ | 1 | 576-01127-1332 | CCW Pump NONE with 1.25" ORB inlet and 1.25" ORB outlet connecting to FRONT |
| FL | 1 | 576-01129-4369 | CCW Pump NONE with 1.5" ORB inlet and 0.75" ORB top outlet connecting to REAR Plus 1" ORB bottom outlet connecting to FRONT |
| FM | 1 | 576-01129-4316 | CCW Pump NONE with 1.5" ORB inlet and 0.75" ORB top outlet connecting to REAR Plus 0.75" ORB bottom outlet connecting to FRONT |
| FJ | 1 | 576-01129-4373 | CCW Pump NONE with 1.5" ORB inlet and 0.875" ORB top outlet connecting to REAR Plus 1" ORB bottom outlet connecting to FRONT |
| FK | 1 | 576-01129-4322 | CCW Pump NONE with 1.5" ORB inlet and 0.875" ORB top outlet connecting to REAR Plus 0.875" ORB bottom outlet connecting to FRONT |
| KJ | 1 | 576-01127-1375 | CCW Pump NONE with 1.5" ORB inlet and 0.875" ORB outlet connecting to FRONT |
| EJ | 1 | 576-01127-1378 | CCW Pump NONE with 1.5" ORB inlet and 1" ORB outlet connecting to FRONT |
| FI | 1 | 576-01129-4327 | CCW Pump NONE with 1.5" ORB inlet and 1" ORB top outlet connecting to REAR Plus 1" ORB bottom outlet connecting to FRONT |
| BJ | 1 | 576-01127-1381 | CCW Pump NONE with 1.5" ORB inlet and 1.25" ORB outlet connecting to FRONT |
| AJ | 1 | 576-01127-1337 | CCW Pump NONE with 1.5" ORB inlet and 1.5" ORB outlet connecting to FRONT |
| LV | 1 | 576-01127-1359 | CW Pump NONE with 0.75" ORB inlet and 0.5" ORB outlet connecting to FRONT |
| LU | 1 | 576-01127-1364 | CW Pump NONE with 0.75" ORB inlet and 0.625" ORB outlet connecting to FRONT |
| LT | 1 | 576-01127-1316 | CW Pump NONE with 0.75" ORB inlet and 0.75" ORB outlet connecting to FRONT |
| LS | 1 | 576-01127-1361 | CW Pump NONE with 1" ORB inlet and 0.5" ORB outlet connecting to FRONT |
| XB | 1 | 576-01129-6304 | CW Pump NONE with 1" ORB inlet and 0.5" ORB top outlet connecting to FRONT Plus 0.5" ORB bottom outlet connecting to REAR |
| WB | 1 | 576-01129-6311 | CW Pump NONE with 1" ORB inlet and 0.625" ORB top outlet connecting to FRONT Plus 0.625" ORB bottom outlet connecting to REAR |
| LR | 1 | 576-01127-1366 | CW Pump NONE with 1" ORB inlet and 0.625" ORB outlet connecting to FRONT |
| LQ | 1 | 576-01127-1369 | CW Pump NONE with 1" ORB inlet and 0.75" ORB outlet connecting to FRONT |
| SB | 1 | 576-01129-6316 | CW Pump NONE with 1" ORB inlet and 0.75" ORB top outlet connecting to FRONT Plus 0.75" ORB bottom outlet connecting to REAR |
| UB | 1 | 576-01129-6364 | CW Pump NONE with 1" ORB inlet and 0.75" ORB top outlet connecting to FRONT Plus 0.625" ORB bottom outlet connecting to REAR |
| VB | 1 | 576-01129-6359 | CW Pump NONE with 1" ORB inlet and 0.75" ORB top outlet connecting to FRONT Plus 0.5" ORB bottom outlet connecting to REAR |
| LP | 1 | 576-01127-1373 | CW Pump NONE with 1" ORB inlet and 0.875" ORB outlet connecting to FRONT |
| QB | 1 | 576-01129-6322 | CW Pump NONE with 1" ORB inlet and 0.875" ORB top outlet connecting to FRONT Plus 0.875" ORB bottom outlet connecting to REAR |
| RB | 1 | 576-01129-6369 | CW Pump NONE with 1" ORB inlet and 1" ORB top outlet connecting to FRONT Plus 0.75" ORB bottom outlet connecting to REAR |
| LM | 1 | 576-01127-1327 | CW Pump NONE with 1" ORB inlet and 1" ORB outlet connecting to FRONT |
| XF | 1 | 576-01129-6327 | CW Pump NONE with 1" ORB inlet and 1" ORB top outlet connecting to FRONT Plus 1" ORB bottom outlet connecting to REAR |
| LK | 1 | 576-01127-1362 | CW Pump NONE with 1.25" ORB inlet and 0.5" ORB outlet connecting to FRONT |
| WF | 1 | 576-01129-5304 | CW Pump NONE with 1.25" ORB inlet and 0.5" ORB top outlet connecting to FRONT Plus 0.5" ORB bottom outlet connecting to REAR |

Bearing Carrier Codes

ORB

Code QTY Part Number Description

| | | | |
|----|---|----------------|----------------------------------------------------------------------------------------------------------------------------------|
| VF | 1 | 576-01129-5311 | CW Pump NONE with 1.25" ORB inlet and 0.625" ORB top outlet connecting to FRONT Plus 0.625" ORB bottom outlet connecting to REAR |
| LA | 1 | 576-01127-1349 | CW Pump NONE with 1.25" ORB inlet and 0.625" ORB outlet connecting to FRONT |
| JP | 1 | 576-01127-1370 | CW Pump NONE with 1.25" ORB inlet and 0.75" ORB outlet connecting to FRONT |
| UF | 1 | 576-01129-5359 | CW Pump NONE with 1.25" ORB inlet and 0.75" ORB top outlet connecting to FRONT Plus 0.5" ORB bottom outlet connecting to REAR |
| SF | 1 | 576-01129-5316 | CW Pump NONE with 1.25" ORB inlet and 0.75" ORB top outlet connecting to FRONT Plus 0.75" ORB bottom outlet connecting to REAR |
| TF | 1 | 576-01129-5364 | CW Pump NONE with 1.25" ORB inlet and 0.75" ORB top outlet connecting to FRONT Plus 0.625" ORB bottom outlet connecting to REAR |
| JO | 1 | 576-01127-1374 | CW Pump NONE with 1.25" ORB inlet and 0.875" ORB outlet connecting to FRONT |
| QF | 1 | 576-01129-5322 | CW Pump NONE with 1.25" ORB inlet and 0.875" ORB top outlet connecting to FRONT Plus 0.875" ORB bottom outlet connecting to REAR |
| OF | 1 | 576-01129-5327 | CW Pump NONE with 1.25" ORB inlet and 1" ORB top outlet connecting to FRONT Plus 1" ORB bottom outlet connecting to REAR |
| PF | 1 | 576-01129-5373 | CW Pump NONE with 1.25" ORB inlet and 1" ORB top outlet connecting to FRONT Plus 0.875" ORB bottom outlet connecting to REAR |
| RF | 1 | 576-01129-5369 | CW Pump NONE with 1.25" ORB inlet and 1" ORB top outlet connecting to FRONT Plus 0.75" ORB bottom outlet connecting to REAR |
| JN | 1 | 576-01127-1377 | CW Pump NONE with 1.25" ORB inlet and 1" ORB outlet connecting to FRONT |
| JM | 1 | 576-01127-1332 | CW Pump NONE with 1.25" ORB inlet and 1.25" ORB outlet connecting to FRONT |
| JL | 1 | 576-01127-1371 | CW Pump NONE with 1.5" ORB inlet and 0.75" ORB outlet connecting to FRONT |
| MF | 1 | 576-01129-4316 | CW Pump NONE with 1.5" ORB inlet and 0.75" ORB top outlet connecting to FRONT Plus 0.75" ORB bottom outlet connecting to REAR |
| KF | 1 | 576-01129-4322 | CW Pump NONE with 1.5" ORB inlet and 0.875" ORB top outlet connecting to FRONT Plus 0.875" ORB bottom outlet connecting to REAR |
| JK | 1 | 576-01127-1375 | CW Pump NONE with 1.5" ORB inlet and 0.875" ORB outlet connecting to FRONT |
| JE | 1 | 576-01127-1378 | CW Pump NONE with 1.5" ORB inlet and 1" ORB outlet connecting to FRONT |
| LF | 1 | 576-01129-4369 | CW Pump NONE with 1.5" ORB inlet and 1" ORB top outlet connecting to FRONT Plus 0.75" ORB bottom outlet connecting to REAR |
| IF | 1 | 576-01129-4327 | CW Pump NONE with 1.5" ORB inlet and 1" ORB top outlet connecting to FRONT Plus 1" ORB bottom outlet connecting to REAR |
| JF | 1 | 576-01129-4373 | CW Pump NONE with 1.5" ORB inlet and 1" ORB top outlet connecting to FRONT Plus 0.875" ORB bottom outlet connecting to REAR |
| JB | 1 | 576-01127-1381 | CW Pump NONE with 1.5" ORB inlet and 1.25" ORB outlet connecting to FRONT |
| JA | 1 | 576-01127-1337 | CW Pump NONE with 1.5" ORB inlet and 1.5" ORB outlet connecting to FRONT |
| TL | 1 | 576-01127-1316 | CCW Pump Single In Single Out with 0.75" ORB inlet and 0.75" ORB outlet connecting to FRONT |
| LJ | 1 | 576-01127-1371 | CCW Pump Single In Single Out with 1.5" ORB inlet and 0.75" ORB outlet connecting to FRONT |

Bearing Carrier Codes

SF

Code QTY Part Number Description

| | | | |
|----|---|----------------|------------------------------------------------------------------------------------------------------------------------------|
| MG | 1 | 576-01127-1259 | CCW Pump NONE with 0.75" SF inlet and 0.5" SF outlet connecting to FRONT |
| LG | 1 | 576-01127-1216 | CCW Pump NONE with 0.75" SF inlet and 0.75" SF outlet connecting to FRONT |
| KG | 1 | 576-01127-1261 | CCW Pump NONE with 1" SF inlet and 0.5" SF outlet connecting to FRONT |
| ZF | 1 | 576-01129-6259 | CCW Pump NONE with 1" SF inlet and 0.5" SF top outlet connecting to REAR Plus 0.75" SF bottom outlet connecting to FRONT |
| ZG | 1 | 576-01129-6204 | CCW Pump NONE with 1" SF inlet and 0.5" SF top outlet connecting to REAR Plus 0.5" SF bottom outlet connecting to FRONT |
| ZE | 1 | 576-01129-6216 | CCW Pump NONE with 1" SF inlet and 0.75" SF top outlet connecting to REAR Plus 0.75" SF bottom outlet connecting to FRONT |
| EG | 1 | 576-01127-1269 | CCW Pump NONE with 1" SF inlet and 0.75" SF outlet connecting to FRONT |
| BG | 1 | 576-01127-1227 | CCW Pump NONE with 1" SF inlet and 1" SF outlet connecting to FRONT |
| AG | 1 | 576-01127-1262 | CCW Pump NONE with 1.25" SF inlet and 0.5" SF outlet connecting to FRONT |
| ZC | 1 | 576-01129-5259 | CCW Pump NONE with 1.25" SF inlet and 0.5" SF top outlet connecting to REAR Plus 0.75" SF bottom outlet connecting to FRONT |
| ZD | 1 | 576-01129-5204 | CCW Pump NONE with 1.25" SF inlet and 0.5" SF top outlet connecting to REAR Plus 0.5" SF bottom outlet connecting to FRONT |
| ZB | 1 | 576-01129-5216 | CCW Pump NONE with 1.25" SF inlet and 0.75" SF top outlet connecting to REAR Plus 0.75" SF bottom outlet connecting to FRONT |
| LB | 1 | 576-01127-1270 | CCW Pump NONE with 1.25" SF inlet and 0.75" SF outlet connecting to FRONT |
| KB | 1 | 576-01127-1277 | CCW Pump NONE with 1.25" SF inlet and 1" SF outlet connecting to FRONT |
| IB | 1 | 576-01127-1232 | CCW Pump NONE with 1.25" SF inlet and 1.25" SF outlet connecting to FRONT |
| GM | 1 | 576-01127-1259 | CW Pump NONE with 0.75" SF inlet and 0.5" SF outlet connecting to FRONT |
| GL | 1 | 576-01127-1216 | CW Pump NONE with 0.75" SF inlet and 0.75" SF outlet connecting to FRONT |
| GK | 1 | 576-01127-1261 | CW Pump NONE with 1" SF inlet and 0.5" SF outlet connecting to FRONT |
| GZ | 1 | 576-01129-6204 | CW Pump NONE with 1" SF inlet and 0.5" SF top outlet connecting to FRONT Plus 0.5" SF bottom outlet connecting to REAR |
| EZ | 1 | 576-01129-6216 | CW Pump NONE with 1" SF inlet and 0.75" SF top outlet connecting to FRONT Plus 0.75" SF bottom outlet connecting to REAR |
| FZ | 1 | 576-01129-6259 | CW Pump NONE with 1" SF inlet and 0.75" SF top outlet connecting to FRONT Plus 0.5" SF bottom outlet connecting to REAR |
| GE | 1 | 576-01127-1269 | CW Pump NONE with 1" SF inlet and 0.75" SF outlet connecting to FRONT |
| GB | 1 | 576-01127-1227 | CW Pump NONE with 1" SF inlet and 1" SF outlet connecting to FRONT |
| GA | 1 | 576-01127-1262 | CW Pump NONE with 1.25" SF inlet and 0.5" SF outlet connecting to FRONT |
| DZ | 1 | 576-01129-5204 | CW Pump NONE with 1.25" SF inlet and 0.5" SF top outlet connecting to FRONT Plus 0.5" SF bottom outlet connecting to REAR |
| BZ | 1 | 576-01129-5216 | CW Pump NONE with 1.25" SF inlet and 0.75" SF top outlet connecting to FRONT Plus 0.75" SF bottom outlet connecting to REAR |
| CZ | 1 | 576-01129-5259 | CW Pump NONE with 1.25" SF inlet and 0.75" SF top outlet connecting to FRONT Plus 0.5" SF bottom outlet connecting to REAR |
| BL | 1 | 576-01127-1270 | CW Pump NONE with 1.25" SF inlet and 0.75" SF outlet connecting to FRONT |
| BK | 1 | 576-01127-1277 | CW Pump NONE with 1.25" SF inlet and 1" SF outlet connecting to FRONT |
| BI | 1 | 576-01127-1232 | CW Pump NONE with 1.25" SF inlet and 1.25" SF outlet connecting to FRONT |

Bearing Carrier Small Parts

Code QTY Part Number Description