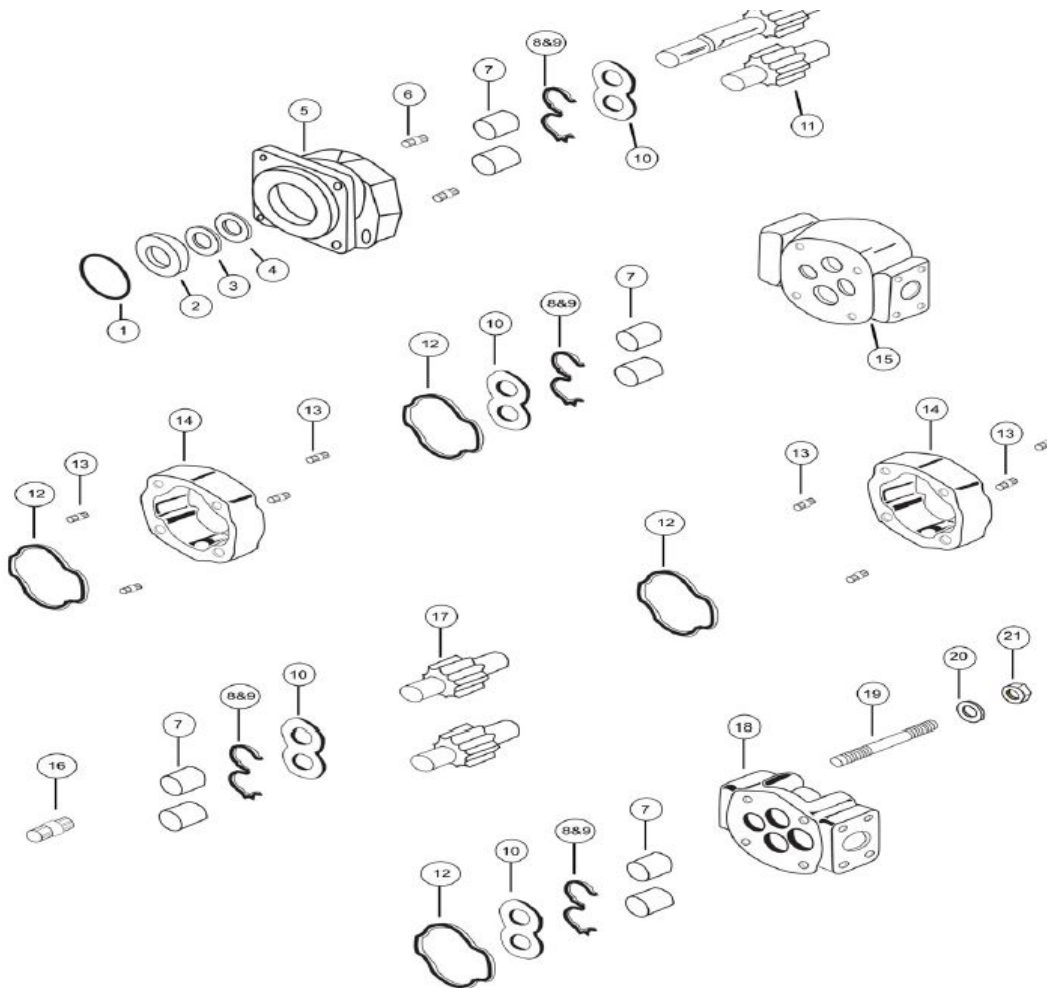


HYDROPOWER SERVICES BV

Zwanenburgerdijk 330 a
 1161 NN Zwanenburg
 The Netherlands
 Tel. 0653118328
[e-mail info@hydropower.nl](mailto:info@hydropower.nl)
[Website www.hydropower.nl](http://www.hydropower.nl)



M/P 350



1	SHAFT BRG. SNAP RING	X05-03-77250	391-2686-065
2 a	INPUT SHAFT BRG.	X03-16-13272	391-0381-077
2 b	SEAL RETAINER & SPACER IN PLACE OF SHAFT BRG.	A50-60-10000	391-3383-087
3	SEAL RETAINER FOR MOTORS ONLY	A50-60-30000	391-3383-020
4 a	PUMP LIP SEAL	X83-11-03308	391-2883-103
4 b	MOTOR LIP SEAL	X83-36-03309	391-2883-115
4 c	SEAL FOR CONTINENTAL SHAFT	X89-11-03308	391-2883-133

5 a	4 BOLT B MOUNT PUMP S.E.C. WITHOUT BUSHING TYPE 42 (4" or 101.6 mm pilot)	A35-10-21421	323-5033-201
5 b	4 BOLT B MOUNT PUMP S.E.C. WITH BUSHING TYPE 42 (4" or 101.6 mm pilot)	A35-10-21422	323-5133-201
5 c	2/4 BOLT B MOUNT PUMP S.E.C. WITHOUT BUSHING TYPE 46 (4" or 101.6 mm pilot)	A35-10-21321	323-5053-201
5 d	2/4 BOLT B MOUNT PUMP S.E.C. WITH BUSHING TYPE 46 (4" or 101.6 mm pilot)	A35-10-21322	323-5153-201
5 e	4 BOLT C MOUNT PUMP S.E.C. WITHOUT BUSHING TYPE 78 (5" or 127 mm pilot)	A35-10-21431	323-5033-202
5 f	4 BOLT C MOUNT PUMP S.E.C. WITH BUSHING TYPE 78 (5" or 127 mm pilot)	A35-10-21432	323-5133-202
5 g	2 BOLT B MOUNT PUMP S.E.C. WITHOUT BUSHING TYPE 97 (4" or 101.6 mm pilot)	A35-10-21221	323-5023-201
5 h	2 BOLT B MOUNT PUMP S.E.C. WITH BUSHING TYPE 97 (4" or 101.6 mm pilot)	A35-10-21222	323-5123-201
5 i	2 BOLT C MOUNT PUMP S.E.C. WITHOUT BUSHING TYPE 98 (5" or 127 mm pilot)	A35-10-21231	323-5023-202
5 j	2 BOLT C MOUNT PUMP S.E.C. WITH BUSHING TYPE 98 (5" or 127 mm pilot)	A35-10-21232	323-5123-202
5 k	4 BOLT B MOUNT MOTOR S.E.C. WITHOUT BUSHING TYPE 42 (4" or 101.6 mm pilot)	A35-10-41421	323-5033-401
5 L	4 BOLT B MOUNT MOTOR S.E.C. WITH BUSHING TYPE 42 (4" or 101.6 mm pilot)	A35-10-41422	323-5133-401
5 m	2/4 BOLT B MOUNT MOTOR S.E.C. WITHOUT BUSHING TYPE 46 (4" or 101.6 mm pilot)	A35-10-41321	323-5053-401
5 n	2/4 BOLT B MOUNT MOTOR S.E.C. WITH BUSHING TYPE 46 (4" or 101.6 mm pilot)	A35-10-41322	323-5153-401
5 o	4 BOLT C MOUNT MOTOR S.E.C. WITHOUT BUSHING TYPE 78 (5" or 127 mm pilot)	A35-10-41431	323-5033-402
5 p	4 BOLT C MOUNT MOTOR S.E.C. WITH BUSHING TYPE 78 (5" or 127 mm pilot)	A35-10-41432	323-5133-402
5 q	2 BOLT B MOUNT MOTOR S.E.C. WITHOUT BUSHING TYPE 97 (4" or 101.6 mm pilot)	A35-10-41221	323-5023-401
5 r	2 BOLT B MOUNT MOTOR S.E.C. WITH BUSHING TYPE 97 (4" or 101.6 mm pilot)	A35-10-41222	323-5123-401
5 s	2 BOLT C MOUNT MOTOR S.E.C. WITHOUT BUSHING TYPE 98 (5" or 127 mm pilot)	A35-10-41231	323-5023-402
5 t	2 BOLT C MOUNT MOTOR S.E.C. WITH BUSHING TYPE 98 (5" or 127 mm pilot)	A35-10-41232	323-5123-402
6 a	CHECK VALVE MOTOR	A00-75-11000	391-3681-001
6 b	PRESSURE PLUG PUMP	X02-03-32110	391-2286-004
7	SHAFT BUSHING	X03-00-33337	391-0482-308
8	PUMP Buna SEAL	A35-82-11050	391-2883-140
9	PUMP NYLON BACKUP SEAL	A35-82-46010	391-2883-139
10 a	PUMP THRUST PLATE	A35-70-20000	391-2185-057
10 b	MOTOR THRUST PLATE	A35-70-10000	391-2185-068
Not Shown	MOTOR NYLON BACKUP SEAL	A35-82-46030	391-2885-075
Not Shown	MOTOR THRUST PLATE SIDE SEAL	A35-82-14021	391-2885-073
Not Shown	MOTOR THRUST PLATE END SEAL	A35-82-14020	391-2885-074
Not Shown	MOTOR NYLON BACKUP SEAL	A35-82-46030	391-2885-075
Not Shown	MOTOR THRUST PLATE SIDE SEAL	A35-82-14021	391-2885-073
Not Shown	MOTOR THRUST PLATE END SEAL	A35-82-14020	391-2885-074
11 a	SHAFT & GEAR 14 TOOTH SPLINE 1.228" maj. dia. TYPE 7	A35-50-XX245	323-29XX-250
11 b	SHAFT & GEAR 1.250" KEYED (5/16") TYPE 11	A35-50-XX145	323-29XX-750
11 c	SHAFT & GEAR SET 13 TOOTH SPLINE 0.858" maj. dia. TYPE 25	A35-50-XX225	323-29XX-230
11 d	SHAFT & GEAR SET 0.9984" dia. KEYED (1/4" x 3/8" x 1 1/4") TYPE 43	A35-50-XX135	323-29XX-740
11 e	SHAFT & GEAR 15 TOOTH SPLINE 0.980" maj. dia. TYPE 98	A35-50-XX231	323-29XX-240
11 f	SHAFT & GEAR 1.250" dia. KEYED (5/16" x 5/16" x 2 1/4") TYPE 73	SPECIAL ORDER	323-29XX-752
12 a	PUMP HOUSING GASKET	X85-11-11403	391-2884-074
12 b	MOTOR HOUSING GASKET	X85-11-10803	391-2884-021
13	HOUSING DOWELL PIN	A00-94-11025	391-2082-032
14 a	PUMP GEAR HOUSING	A35-33-XX000	323-81XX-100
14 b	MOTOR GEAR HOUSING	A35-32-XX000	323-82XX-100
15 a	350 BEARING CARRIER BLANK WITHOUT BUSHING	A35-40-00000	323-7200-100
15 b	350 BEARING CARRIER BLANK WITH BUSHING	A35-40-10000	323-7700-100
15 c	350 BEARING CARRIER 1 OUTLET WITHOUT BUSHING	A35-40-21000	323-7100-100
15 d	350 BEARING CARRIER 1 OUTLET WITH BUSHING	A35-40-31000	323-7600-100
15 e	350 BEARING CARRIER 2 OUTLET WITHOUT BUSHING	A35-40-22000	323-7300-100
15 f	350 BEARING CARRIER 2 OUTLET WITH BUSHING	A35-40-32000	323-7800-100
15 g	350/315 BEARING CARRIER CW WITHOUT BUSHING	A35-40-23000	323-3050-100
15 h	350/315 BEARING CARRIER CW WITH BUSHING	A35-40-33000	323-3150-100
15 i	350/315 BEARING CARRIER CCW WITHOUT BUSHING	A35-40-24000	323-3060-100
15 j	350/315 BEARING CARRIER CCW WITH BUSHING	A35-40-34000	323-3160-100
16 a	CONNECTING SHAFT	A35-50-00500	323-1133-001
16 b	PIGGYBACK CONNECTING SHAFT PHASE 2	A82-50-00500	323-1133-006
16 c	PIGGY BACK CONNECTING SHAFT BEARING SNAP RING	X05-01-61200	391-2686-019
16 d	PIGGY BACK CONNECTING SHAFT BEARING	X03-16-13055	391-0381-099
16 e	PIGGY BACK CONNECTING SHAFT SAE "B" SPLINE	A35-50-00620	323-1133-003
16 f	PIGGY BACK CONNECTING SHAFT SAE "A" SPLINE	A35-50-00610	323-1133-002

17	GEAR SET ONLY	A35-50-XX000	323-28XX-000
18 a	350 PUMP & MOTOR P.E.C. WITHOUT BUSHING NO PORTING	A35-23-00000	323-3000-100

18 b	350 PUMP & MOTOR P.E.C. WITH BUSHING NO PORTING	A35-23-10000	323-3100-100
18 c	350 PUMP P.E.C. PORTING TYPE WITHOUT BUSHING	A35-23-02000	323-3010-100
18 d	350 PUMP P.E.C. PORTING TYPE WITH BUSHING	A35-23-12000	323-3110-100
18 e	350 MOTOR P.E.C. PORTING TYPE WITHOUT BUSHING	A35-22-02000	323-3020-100
18 f	350 MOTOR P.E.C. PORTING TYPE WITH BUSHING	A35-22-12000	323-3120-100
18 g	350 P.E.C. TO S.A.E. "A" PILOT CW WITHOUT BUSHING	A35-23-04000	323-3054-099
18 h	350 P.E.C. TO S.A.E. "A" PILOT CW WITH BUSHING	A35-23-14000	323-3154-099
18 i	350 P.E.C. TO S.A.E. "A" PILOT CCW WITHOUT BUSHING	A35-23-05000	323-3064-099
18 j	350 P.E.C. TO S.A.E. "A" PILOT CCW WITH BUSHING	A35-23-15000	323-3164-099
18 k	350 P.E.C. TO S.A.E. "B" PILOT CW WITHOUT BUSHING	A35-23-06000	323-3054-100
18 l	350 P.E.C. TO S.A.E. "B" PILOT CW WITH BUSHING	A35-23-16000	323-3154-100
18 m	350 P.E.C. TO S.A.E. "B" PILOT CCW WITHOUT BUSHING	A35-23-07000	323-3064-100
18 n	350 P.E.C. TO S.A.E. "B" PILOT CCW WITH BUSHING	A35-23-17000	323-3164-100
19	BOLTS / STUDS (5/8"-UNC)	See page	Fasteners
20	FLAT WASHER (5/8")	X45-10-17005	391-3784-028
21	HEX NUT (5/8"-UNC)	X42-11-16000	391-1451-076
Not Shown	CONTINENTAL SHAFT 1.250" KEYED (5/16") TYPE 11	A35-50-00141	323-1500-500
Not Shown	CONTINENTAL SHAFT TYPE 25 (0.875" Ø- 13 TOOTH SPLINE)	A35-50-00221	323-1000-300
Not Shown	CONTINENTAL SHAFT TYPE 73 LONG (1 1/4" Ø KEYED 5/16")	A35-50-00147	323-1500-502
Not Shown	CONTINENTAL SHAFT 14 TOOTH SPLINE 1.228" maj. dia. TYPE 7	A35-50-00241	323-1135-194
Not Shown	CONTINENTAL SHAFT TYPE 43 (1.00" Ø x 1/4" x 3/8" x 1 1/4" key)	A35-50-00131	323-1500-400
Not Shown	DRIVE KEY FOR TYPE 11 SHAFT	X01-02-80838	391-1781-083
Not Shown	DRIVE KEY FOR TYPE 43 SHAFT	X01-02-60632	391-1781-082
Not Shown	DRIVE KEY FOR TYPE 73 SHAFT	SPECIAL ORDER	391-1781-088
Not Shown	CONTINENTAL SHAFT BRG. RETAINER	A50-60-20000	391-3381-046
Not Shown	CONTINENTAL SHAFT BRG. RETAINER SNAP RING	X05-02-35120	391-2685-040
Not Shown	CASE DRAIN PLUG	X02-03-12060	391-2281-010